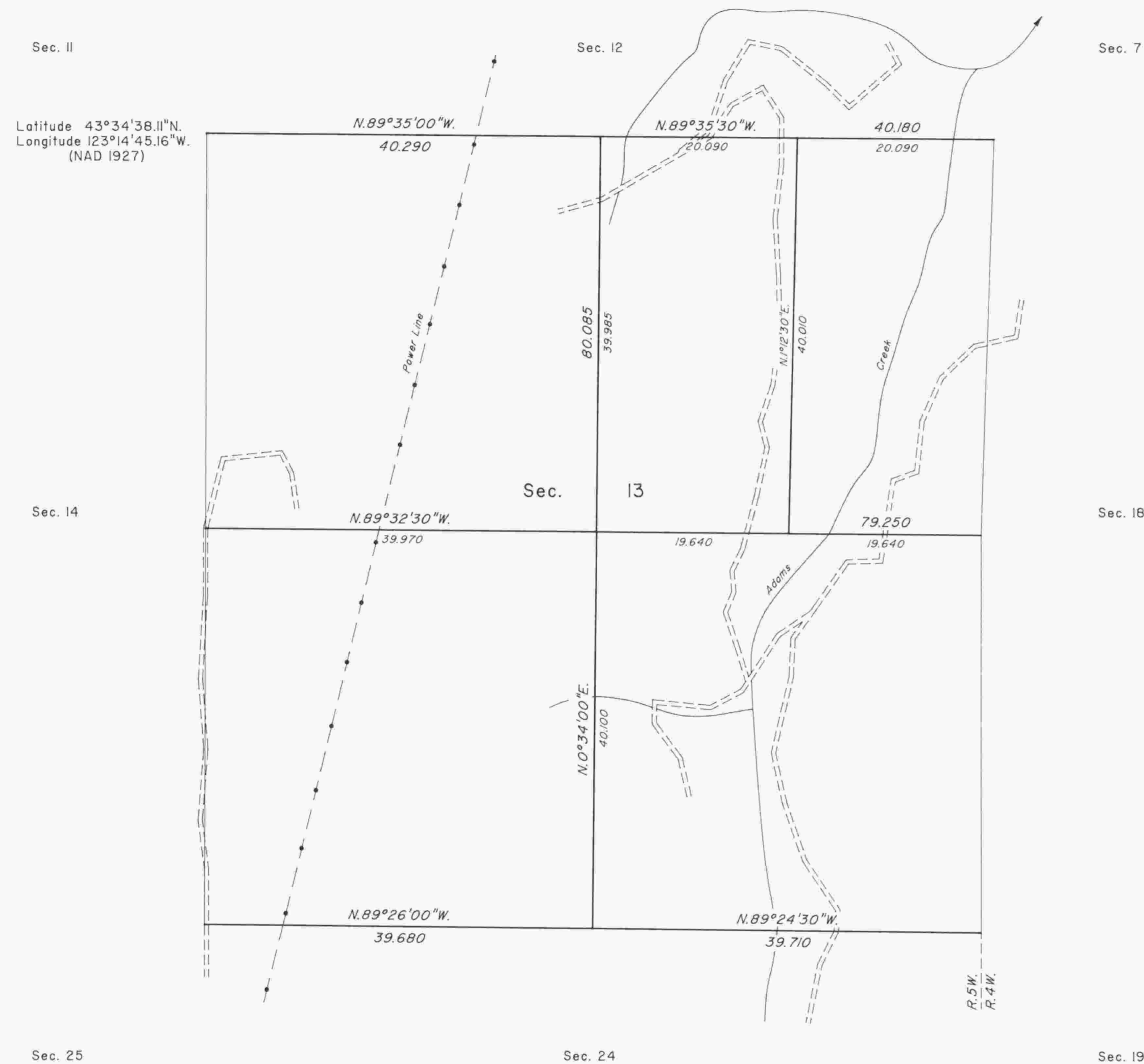


# TOWNSHIP 23 SOUTH, RANGE 5 WEST, OF THE WILLAMETTE MERIDIAN, OREGON

## DEPENDENT RESURVEY AND SUBDIVISION OF SECTION 13



A history of surveys is contained in the field notes.

This plat represents a dependent resurvey of a portion of the subdivisional lines, T. 23 S., R. 5 W., Willamette Meridian, Oregon, designed to restore the corners in their true original locations according to the best available evidence, and the subdivision of section 13.

The areas are as shown on the plat approved June 30, 1853.

The survey was executed by Dale T. Bedell, Cadastral Surveyor, beginning June 18, 1991, and completed July 27, 1992, pursuant to Special Instructions dated April 30, 1991, under Group Number 1601, Oregon.

Timber in this area consists of fir, hemlock, cedar, yew, oak, and madrone.

UNITED STATES DEPARTMENT OF THE INTERIOR  
BUREAU OF LAND MANAGEMENT

Portland, Oregon      September 13, 1995

This plat is strictly conformable to the approved field notes, and the survey, having been correctly executed in accordance with the requirements of law and the regulations of this Bureau, is hereby accepted.

For the Director

*Wayne M. Gardner*  
Chief Cadastral Surveyor of Oregon

