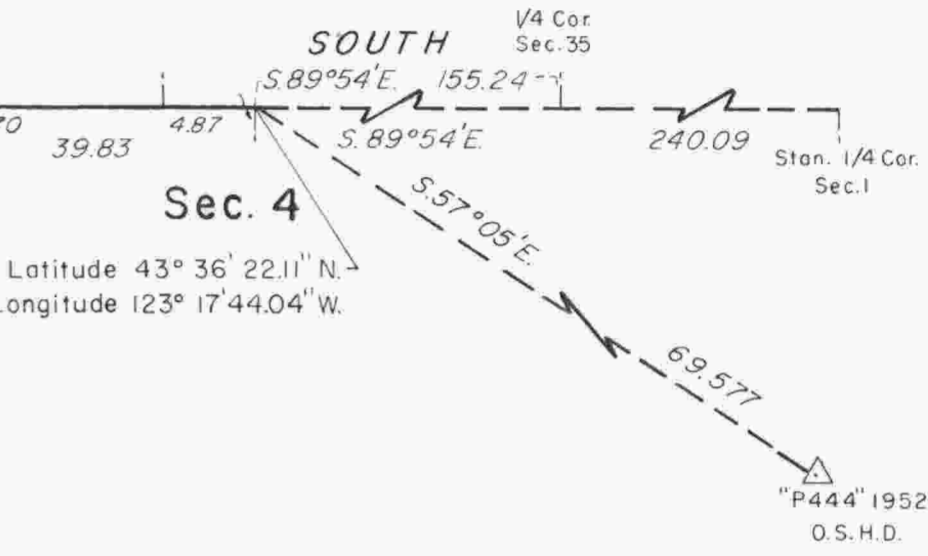
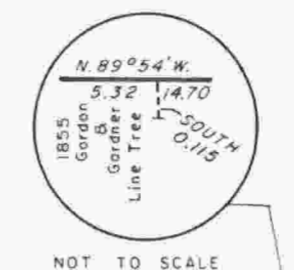
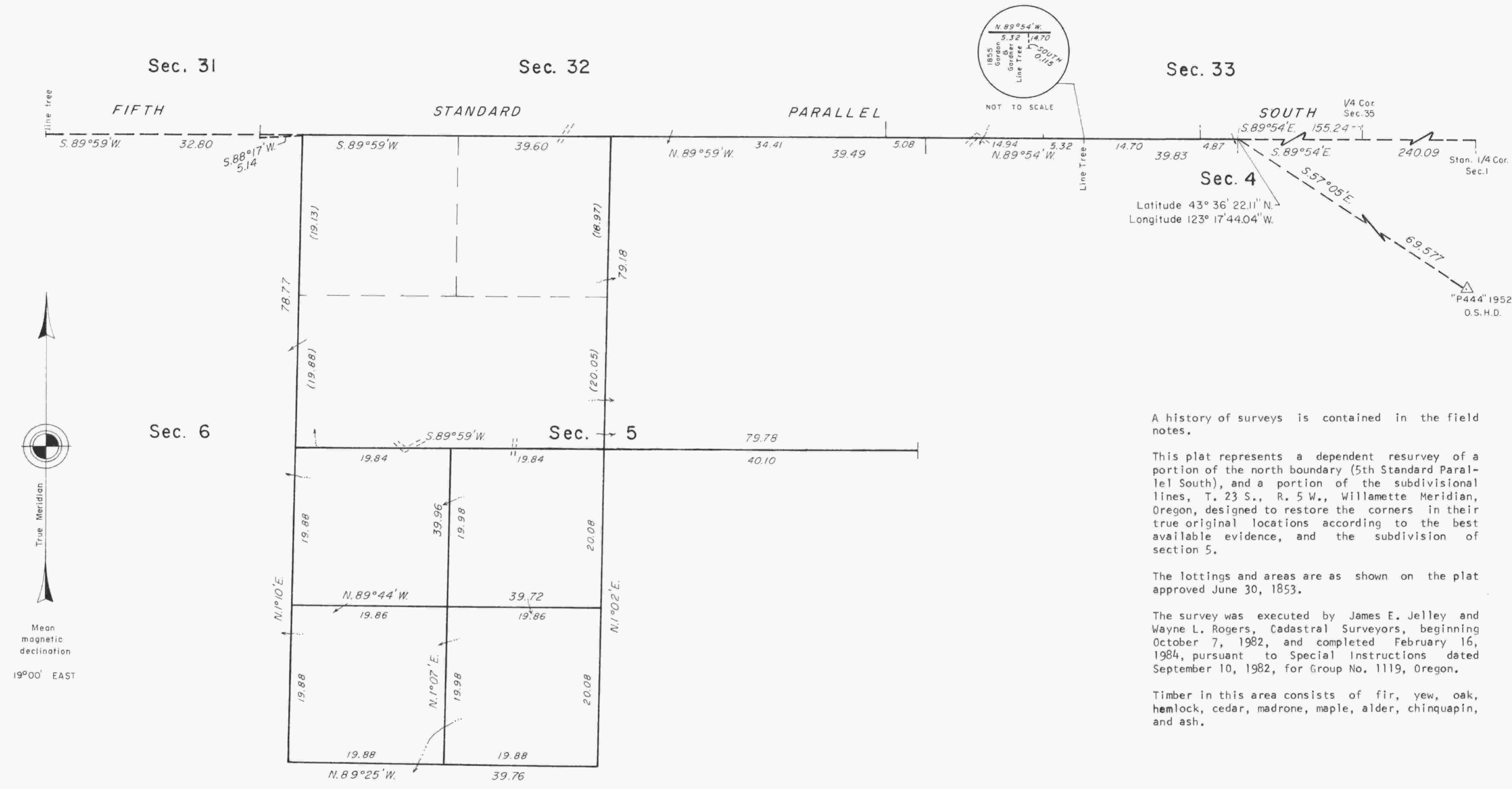


# TOWNSHIP 23 SOUTH, RANGE 5 WEST, OF THE WILLAMETTE MERIDIAN, OREGON

## DEPENDENT RESURVEY AND SUBDIVISION OF SECTION 5



A history of surveys is contained in the field notes.

This plat represents a dependent resurvey of a portion of the north boundary (5th Standard Parallel South), and a portion of the subdivisional lines, T. 23 S., R. 5 W., Willamette Meridian, Oregon, designed to restore the corners in their true original locations according to the best available evidence, and the subdivision of section 5.

The lottings and areas are as shown on the plat approved June 30, 1853.

The survey was executed by James E. Jelley and Wayne L. Rogers, Cadastral Surveyors, beginning October 7, 1982, and completed February 16, 1984, pursuant to Special Instructions dated September 10, 1982, for Group No. 1119, Oregon.

Timber in this area consists of fir, yew, oak, hemlock, cedar, madrone, maple, alder, chinquapin, and ash.

UNITED STATES DEPARTMENT OF THE INTERIOR  
BUREAU OF LAND MANAGEMENT  
Portland, Oregon November 21, 1984

This plat is strictly conformable to the approved field notes, and the survey, having been correctly executed in accordance with the requirements of law and the regulations of this Bureau, is hereby accepted.

For the Director

*William W. Glenn*

Chief Cadastral Surveyor of Oregon