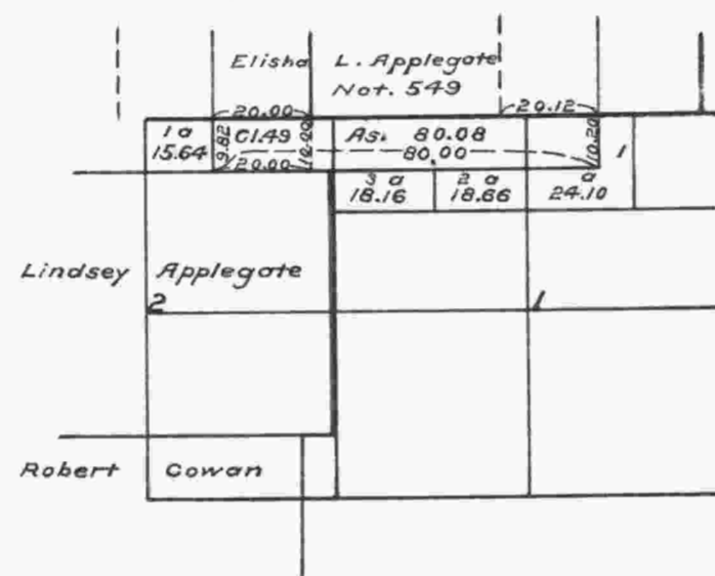


Township N^o 23 South Range N^o 5 West of the Willamette Meridian, Oregon.Special Plat of E.L. Applegate's Claim,
No. 49, in Town. 23 S. R. 5 West Will. Mer.

The above Special plat of the survey of claim No. 49, E.L. Applegate, in Township No. 23 South Range No. 5 West Willamette Meridian, Ogn., is strictly conformable to the field notes of the survey thereof on file in this Office which have been examined and approved.

Surveyor Gen's. Office
Eugene City, April 15th, 1862

(signed)

B.J. Pengra
Sur. Gen. of Oregon.

The above is a correct copy of the original
special plat on file in this office.
U.S. Surveyor General's Office
Portland, Oregon, Dec. 17, 1921

Wesley W. Cairness
Surveyor General of Oregon.

0 10 20 40 80

Scale 40 Chains to an inch
Mean Magnetic Declination.

Surveys Designated	By Whom Surveyed	Group		Amount of Surveys			When Surveyed	
		No.	Date	Mls.	chs.	lks.	Begun	Completed

The above map of Township No. _____ Range No. _____ of the
Meridian _____ is strictly conformable to the field notes of the survey thereof on file
in this office, which have been examined and approved.

U. S. Surveyor General's Office.

Surveyor General.