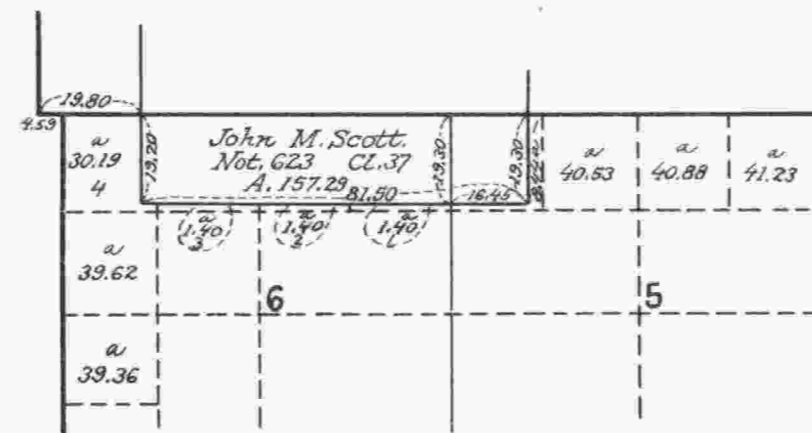


Township No 23 South Range No 4 West of the Willamette Meridian, Oregon.



The above special plat is correctly copied from the original on file in this Office.
 Surveyor General's Office
 Portland, Oregon May 2, 1904 } *John W. Daly*
 Sur² Gen^l for Oregon.

I certify the above to be a correct copy of the original plat on file in this Office.
 U.S. Surveyor General's Office
 Portland, Oregon November 29, 1921.

Edward W. ...
 Surveyor General of Oregon.



Scale 40 Chains to an inch
 Mean Magnetic Declination

Surveys Designated	By Whom Surveyed	Group		Amount of Surveys			When Surveyed	
		No.	Date	Mls.	chs.	fcs.	Begun	Completed

The above map of Township No. _____ Range No. _____ of the _____ Meridian _____ is strictly conformable to the field notes of the survey thereof on file in this office, which have been examined and approved.
 U. S. Surveyor General's Office. }
 Surveyor General.