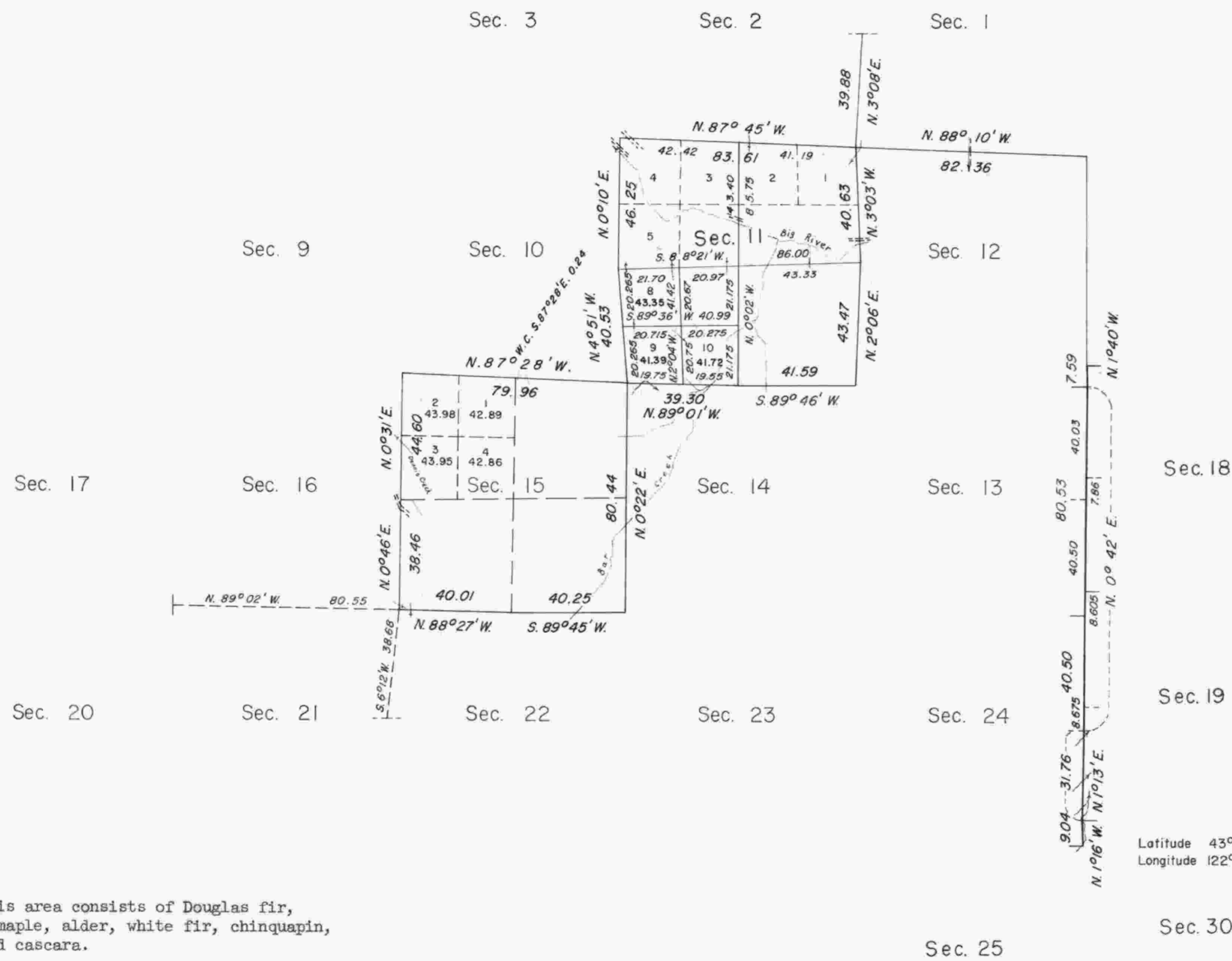


# TOWNSHIP 23 SOUTH, RANGE 3 WEST, OF THE WILLAMETTE MERIDIAN, OREGON.

## DEPENDENT RESURVEY AND SUBDIVISION



Mean magnetic declination  
20°09' East

Timber in this area consists of Douglas fir, hemlock, cedar, maple, alder, white fir, chinquapin, dogwood, yew, and cascara.



Area resurveyed: 1,310.00 acres

This plat represents a retracement and reestablishment of portions of the east boundary and subdivisional lines designed to restore the corners in their true original location according to the best available evidence; and, excepting as new or modified vacant subdivisions are shown hereon, the lottings and areas are as shown on the plat approved June 30, 1883.

A portion of the subdivisional lines surveyed by T. H. Hutchinson in 1855.

The east boundary and a portion of the subdivisional lines surveyed by J. P. Currin in 1882.

The east boundary was resurveyed and closing corners established for T. 23 S., R. 2 W., by H. L. Chandler in 1893.

Dependent resurvey of a portion of the east boundary and subdivisional lines and subdivision of Section 11, T. 23 S., R. 3 W., Willamette Meridian, Oregon, executed by William W. Glenn, August 26 to November 24, 1959, under Special Instructions dated April 5, 1940 and Supplemental Special Instructions dated August 14, 1959, which provide for the surveys included under Group No. 242, Oregon.

Latitude 43°32.8' N.  
Longitude 122°59.2' W.

UNITED STATES DEPARTMENT OF THE INTERIOR  
BUREAU OF LAND MANAGEMENT  
Washington, D.C. September 20, 1960

This plat is strictly conformable to the approved field notes, and the survey, having been correctly executed in accordance with the requirements of law and the regulations of this Bureau, is hereby accepted.

For the Director

Cadastral Engineering Staff Officer