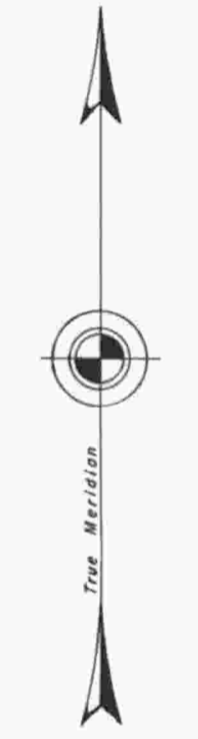
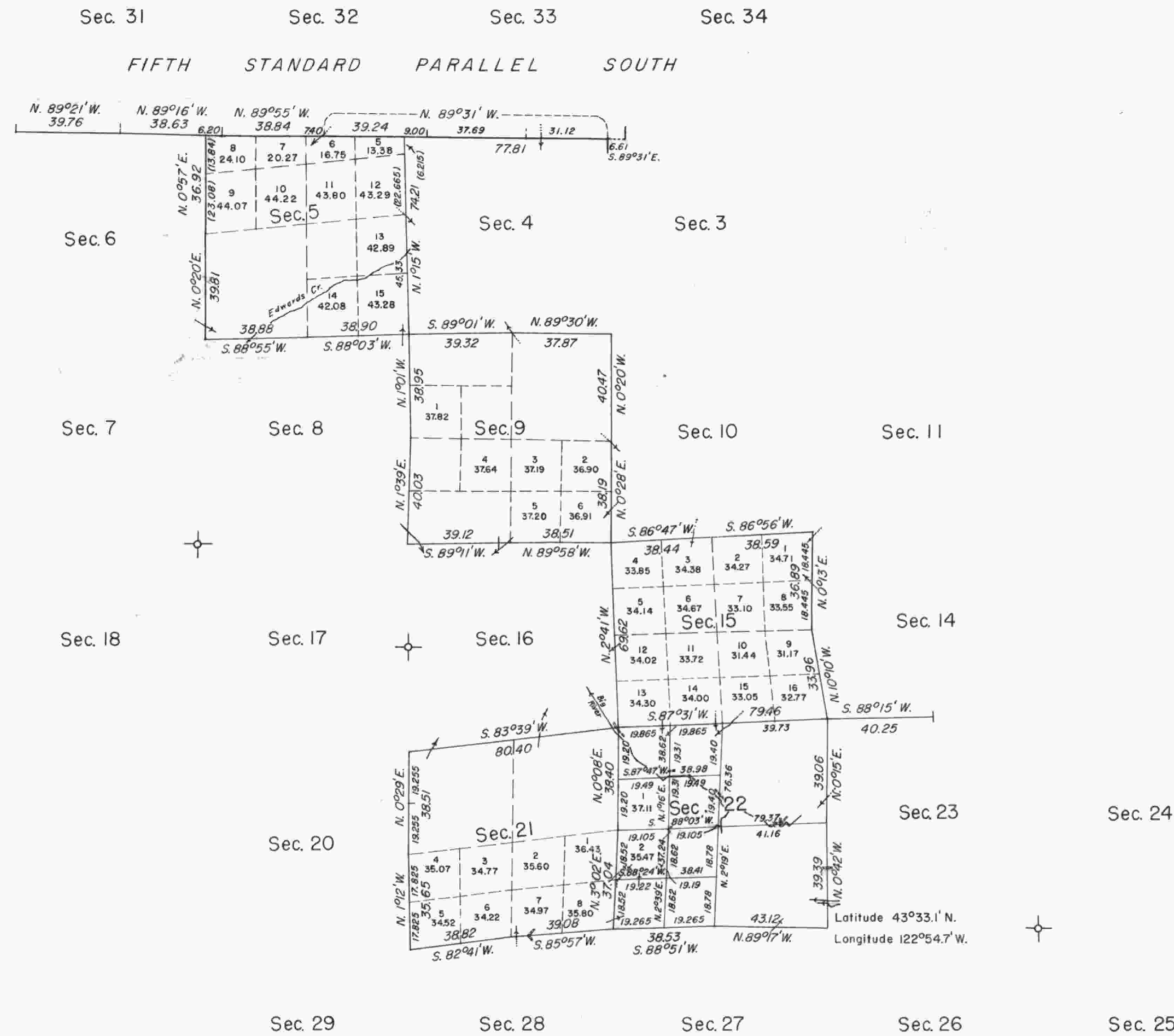
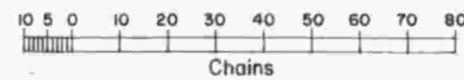


TOWNSHIP 23 SOUTH, RANGE 2 WEST, OF THE WILLAMETTE MERIDIAN, OREGON. DEPENDENT RESURVEY AND SUBDIVISION



Mean magnetic declination
19°22' East



Area resurveyed: 2,972.89 Acres

⊕ Corner remonumented under Group 350 in 1960.

This plat represents a retracement and reestablishment of a portion of the north boundary and subdivisional lines, subdivision of section 22 and remonumentation of certain original corner points, T. 23 S., R. 2 W., Willamette Meridian, Oregon, designed to restore the corners in their true original location according to the best available evidence; and, excepting as new or modified vacant subdivisions are shown hereon, the lottings and areas are as shown on the plat approved January 17, 1895.

The north boundary, Fifth Standard Parallel South, was surveyed by James P. Currin in 1882. The north boundary was resurveyed and the township subdivided by Henry L. Chandler in 1893.

Dependent resurvey of a portion of the north boundary and subdivisional lines, partial subdivision of section 22, and remonumentation of certain original corner points, T. 23 S., R. 2 W., Willamette Meridian, Oregon, executed by William W. Glenn, April 28, 1960 to July 10, 1961, under Special Instructions dated April 11, 1940, and May 3, 1957, and Supplemental Special Instructions dated April 20, 1960, which provide for the surveys included under Group Nos. 245 and 350, Oregon.

UNITED STATES DEPARTMENT OF THE INTERIOR
BUREAU OF LAND MANAGEMENT
Washington, D.C. June 20, 1963

This plat is strictly conformable to the approved field notes, and the survey, having been correctly executed in accordance with the requirements of law and the regulations of this Bureau, is hereby accepted.

For the Director

Clark J. Lumm

Acting Chief, Division of Engineering