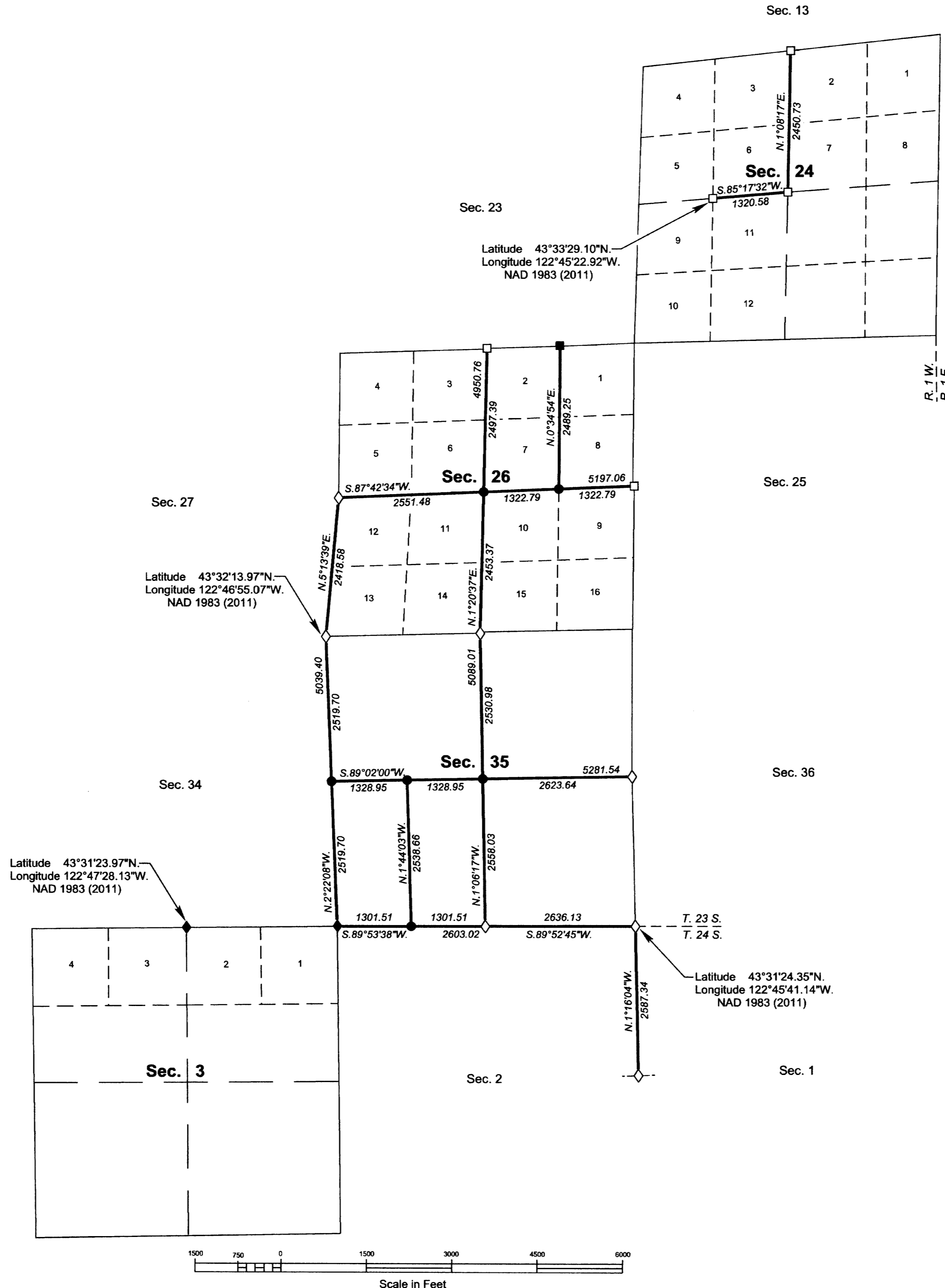


TOWNSHIPS 23 & 24 SOUTH, RANGE 1 WEST, OF THE WILLAMETTE MERIDIAN, OREGON

DEPENDENT RESURVEY, SUBDIVISIONS OF SECTIONS 26 AND 35, AND REMONUMENTATION

FILED
 Date: 2/7/2017 By: JC
 This survey consists of:
 Map: T23-1W 2017-1
 T24-1W 2017-1
 Narrative: VOL. 58 PAGES
 Corner Rpt: 23384-23396

DOUGLAS COUNTY
 SURVEYOR



A history of surveys, corner descriptions, and other relevant information are contained in the field notes.

This plat represents the dependent resurvey of a portion of the south boundary, subdivisional lines, and subdivision of section lines in section 24, and remonumentation of the 1/4 section corner of sections 3 and 34 on the south boundary, designed to restore the corners in their true original locations according to the best available evidence, and the subdivision of sections 26 and 35, Township 23 South, Range 1 West, Willamette Meridian, Oregon, and the dependent resurvey of a portion of the subdivisional lines, designed to restore the corners in their true original locations according to the best available evidence, Township 24 South, Range 1 West, Willamette Meridian, Oregon.

Official areas based on the measurements of this survey have been returned for Federal interest land where indicated. Aliquot part legal subdivisions retain their aliquot characteristics and refer to precisely the same land as that which was previously identified by its original survey or description. A lot can only be subdivided by survey or supplemental plat. Except as indicated hereon, the lottings and areas are as shown on the plats approved January 17, 1895, and August 10, 1897, and the plats accepted February 5, 1962, and July 20, 1990.

Survey executed by Joseph M. Mannix, Cadastral Surveyor, beginning April 10, 2015, and completed July 31, 2015, pursuant to special instructions approved April 10, 2015, and supplemental special instructions approved July 31, 2015, for Group No. 2763, Oregon.

LEGAL SUBDIVISION	OFFICIAL ACRES
SECTION 35	
NE1/4 SW1/4	38.67
NW1/4 SW1/4	38.37
SW1/4 SW1/4	37.96
SE1/4 SW1/4	38.26
TOTAL AREA	153.26
FEDERAL INTEREST LAND RESURVEYED IN SECTION 35	

LEGEND	
◇	Original corner previously remonumented
◆	Original corner remonumented this survey
□	Corner previously established or reestablished
■	Corner previously established or reestablished; remonumented this survey
●	Corner established or reestablished this survey

UNITED STATES DEPARTMENT OF THE INTERIOR
 BUREAU OF LAND MANAGEMENT
 Portland, Oregon

This plat is strictly conformable to the approved field notes, and the survey, having been correctly executed in accordance with the requirements of law and the regulations of this Bureau, is hereby accepted.

For the Director
Mary J. M. Hartzel
 Chief Cadastral Surveyor of Oregon

October 14, 2016
 Date

OFFICIALLY FILED: 12/21/2016