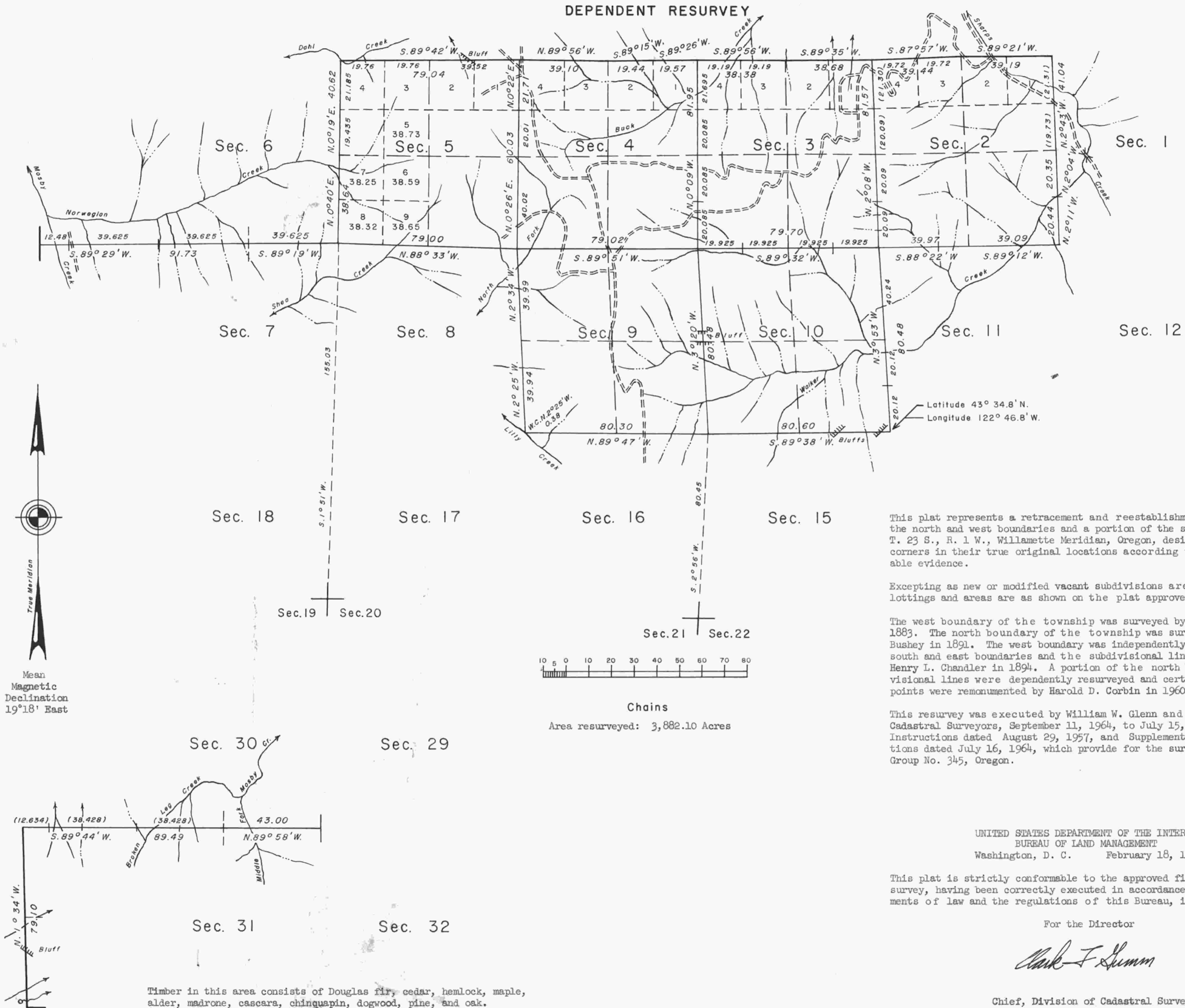


TOWNSHIP 23 SOUTH, RANGE 1 WEST, OF THE WILLAMETTE MERIDIAN, OREGON.

DEPENDENT RESURVEY



True Meridian

Mean Magnetic Declination 19°18' East

Chains

Area resurveyed: 3,882.10 Acres

This plat represents a retracement and reestablishment of a portion of the north and west boundaries and a portion of the subdivisional lines, T. 23 S., R. 1 W., Willamette Meridian, Oregon, designed to restore the corners in their true original locations according to the best available evidence.

Excepting as new or modified vacant subdivisions are shown hereon, the lottings and areas are as shown on the plat approved January 17, 1895.

The west boundary of the township was surveyed by John A. McQuinn in 1883. The north boundary of the township was surveyed by William M. Bushey in 1891. The north boundary was independently resurveyed and the south and east boundaries and the subdivisional lines were surveyed by Henry L. Chandler in 1894. A portion of the north boundary and subdivisional lines were dependently resurveyed and certain original corner points were remanumented by Harold D. Corbin in 1960.

This resurvey was executed by William W. Glenn and Harvey E. Wofford, Cadastral Surveyors, September 11, 1964, to July 15, 1966, under Special Instructions dated August 29, 1957, and Supplemental Special Instructions dated July 16, 1964, which provide for the surveys included under Group No. 345, Oregon.

UNITED STATES DEPARTMENT OF THE INTERIOR
BUREAU OF LAND MANAGEMENT
Washington, D. C. February 18, 1971

This plat is strictly conformable to the approved field notes, and the survey, having been correctly executed in accordance with the requirements of law and the regulations of this Bureau, is hereby accepted.

For the Director
Clark F. Shimm

Chief, Division of Cadastral Survey

Timber in this area consists of Douglas fir, cedar, hemlock, maple, alder, madrone, cascara, chinquapin, dogwood, pine, and oak.