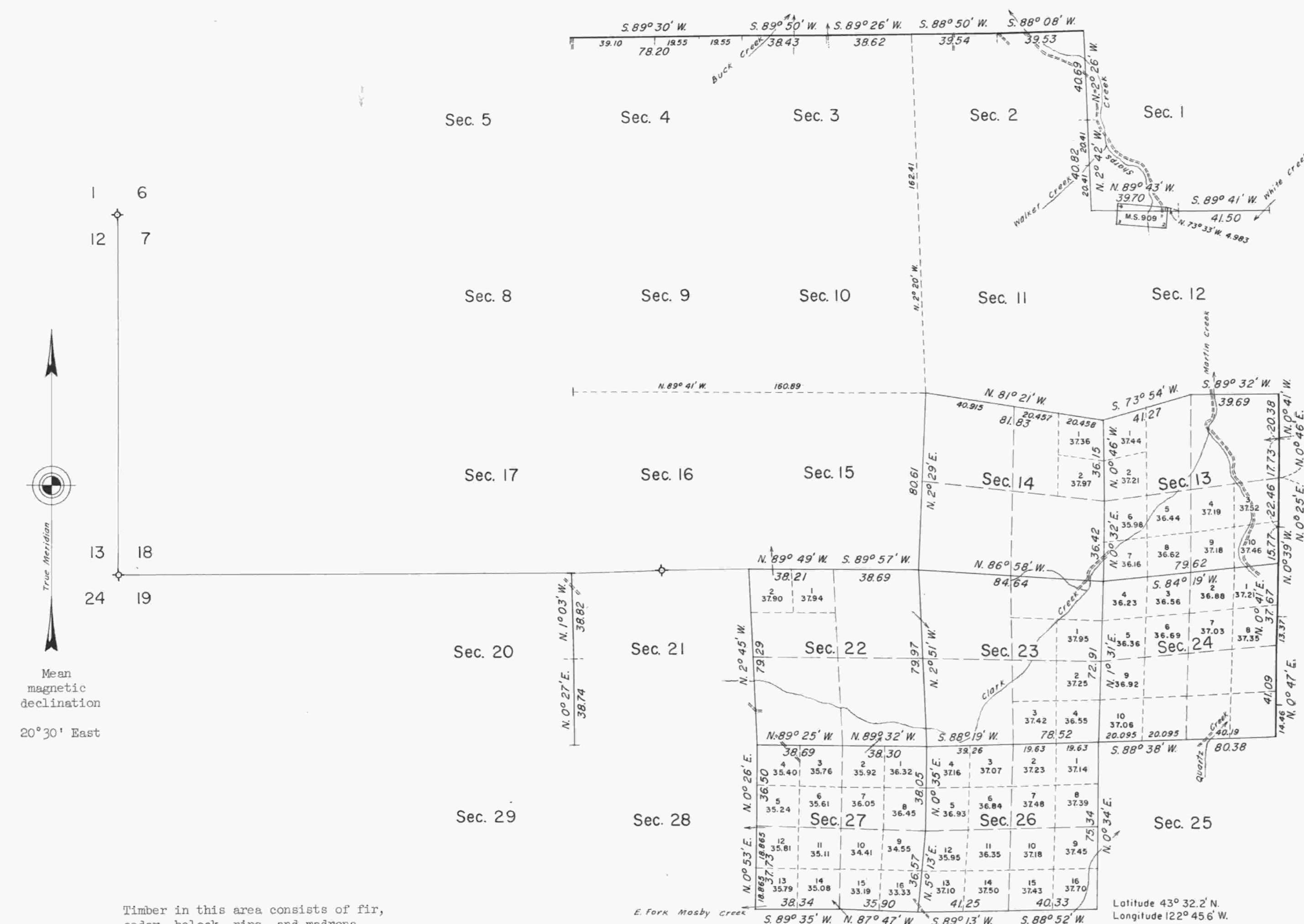


TOWNSHIP 23 SOUTH, RANGE 1 WEST, OF THE WILLAMETTE MERIDIAN, OREGON. DEPENDENT RESURVEY



1 6
12 7
13 18
24 19

True Meridian

Mean magnetic declination
20° 30' East

Timber in this area consists of fir, cedar, hellock, pine, and madrona.

Sec. 7

Sec. 18

Sec. 19

This plat represents a retracement and reestablishment of portions of the north and east boundaries and subdivisional lines, designed to restore the corners in their true original location according to the best available evidence; and, excepting as new or modified vacant subdivision are shown hereon, the lottings and areas are as shown on the plat approved January 17, 1897.

North boundary surveyed by William M. Bushey in 1891.

South, east and west boundaries and subdivisional lines surveyed by Henry L. Chandler in 1893.

East boundary resurveyed by John G. Collins, Dan P. Mumbroe, and Theodore J. VanderMeer in 1925.

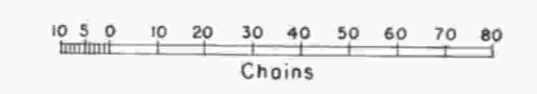
Resurveys and remonumentation of certain corners shown hereon were executed by Harold D. Corbin, from April 26 to October 27, 1960, under special instructions dated May 3, 1957 and August 29, 1957, for Groups 345 and 350, Oregon

UNITED STATES DEPARTMENT OF THE INTERIOR
BUREAU OF LAND MANAGEMENT
Washington, D.C. February 5, 1962

This plat is strictly conformable to the approved field notes, and the survey, having been correctly executed in accordance with the requirements of law and the regulations of this Bureau, is hereby accepted.

For the Director

Chief, Division of Engineering



Area resurveyed: 4275.75 Acres

✧ Corners remonumented in 1957 under Group No. 350.

DEB