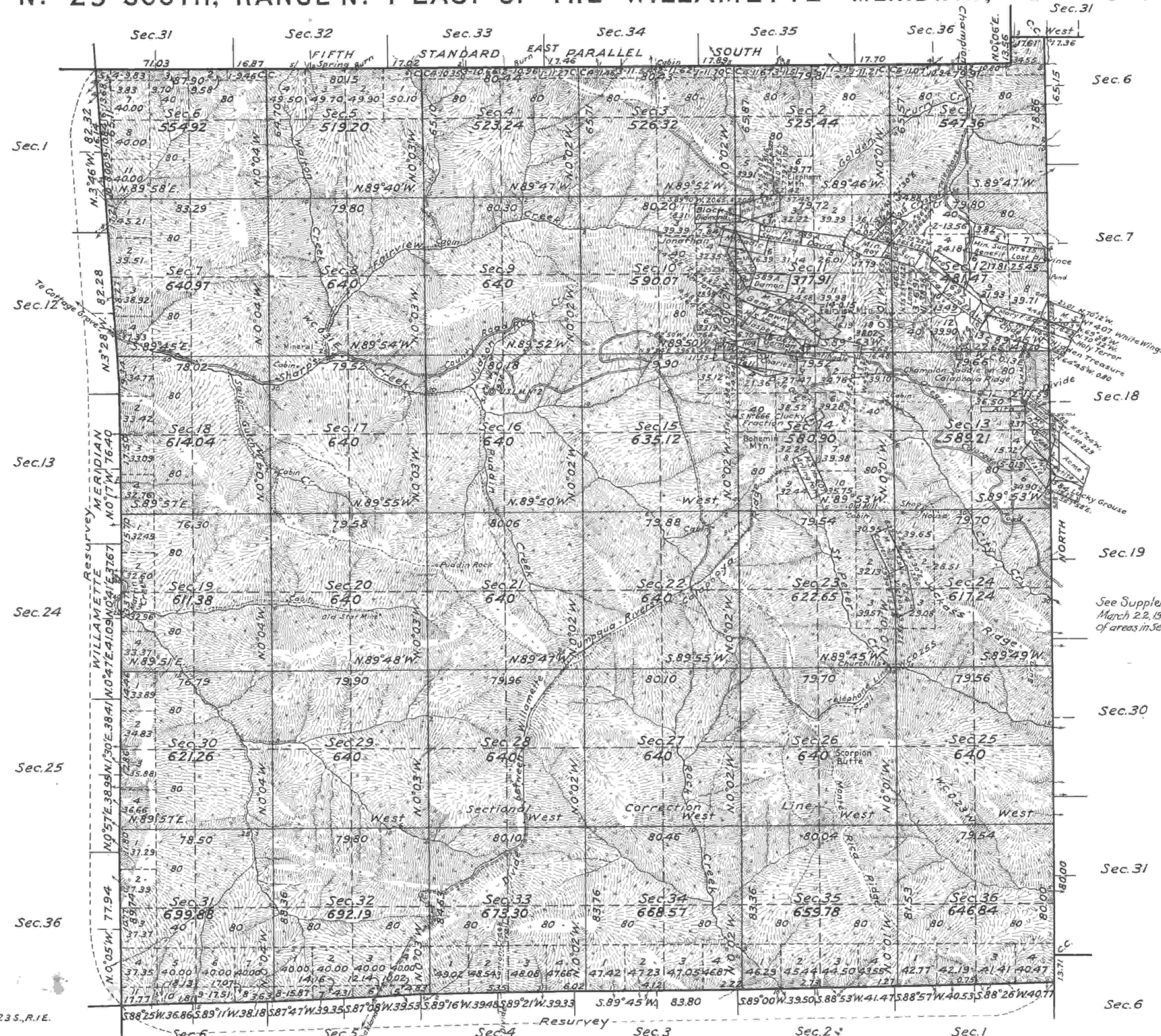


# TOWNSHIP NO 23 SOUTH, RANGE NO 1 EAST OF THE WILLAMETTE MERIDIAN, OREGON.



Lat. 43° 34' N. } In NW 1/4 Sec. 14, T. 23 S., R. 1 E.  
 Long. 122° 40' W. }

Mean Magnetic Declination, 21° 30' E. Scale 40 Chains to an Inch. Area Surveyed, 2189926 Acres

LINES DESIGNATED	BY WHOM SURVEYED	No	GROUP DATE	MILEAGE		WHEN SURVEYED	
				MLS	CHS	BEGUN	COMPLETED
Exterior	John G. Collins U.S.C.E.			17	72.72	Aug. 17, 1922	Sept. 3, 1925
Subdivisional	Dan. P. Mumbroe U.S.S.	84	May 9, 1922.	59	18.01	" 22, "	" 1, "
Meander	Theo. Vander Meer U.S.T.						
Miscellaneous				11	30.85	July 14, "	" 4, "

Office of U.S. Supervisor of Surveys  
 Denver, Colorado, Nov. 30, 1926  
 The above plat of Township No. 23 South, Range No. 1 East of the Willamette Meridian, Oregon, is strictly conformable to the field notes of the survey thereof which have been examined and approved.

*Wm. Johnson*  
 U.S. Supervisor of Surveys.

DEPARTMENT OF THE INTERIOR  
 GENERAL LAND OFFICE  
 Washington, D.C., January 31, 1927.  
 The survey represented by this plat having been correctly executed in accordance with the requirements of law and the regulations of this office, is hereby accepted.

*D. H. Smith*  
 Acting Assistant Commissioner

See Supplemental Plat, accepted March 22, 1927, for the detail showing of areas in Secs. 2, 10, 11, 12, 13, 14, 15, 23 and 24.

*8/21/27*