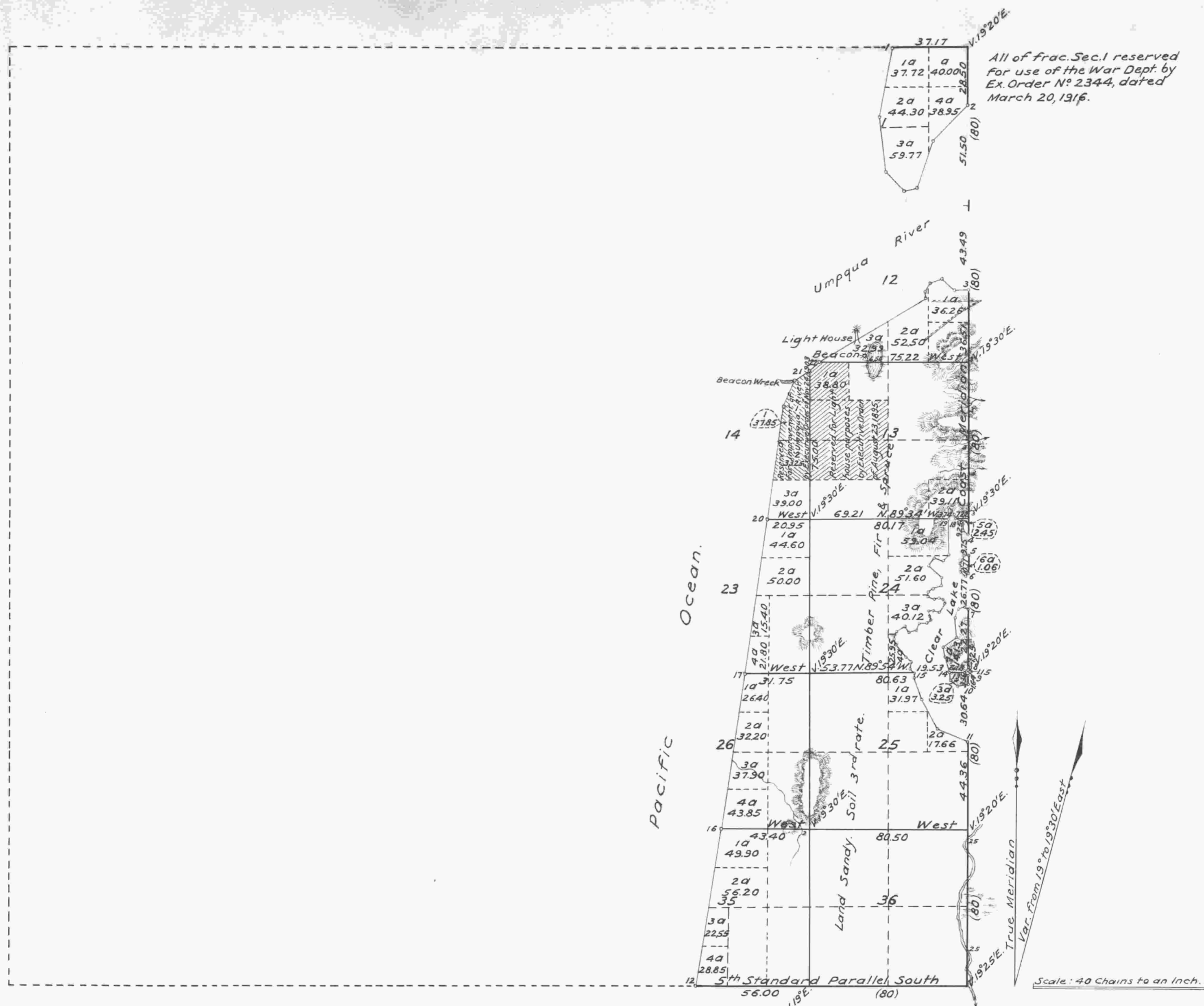


Township N^o 22 South, Range N^o 13 West, Willamette Meridian, Oregon.



Surveys designated	By whom surveyed	Contract		Amt. of Surveys			When surveyed
		No.	Date	Miles	chains	links	
Township Lines	Harvey Gordon	69	February 2 nd 1857	00	00	00	October 19 th 1857
Subdivisions	Harvey Gordon	69	February 2 nd 1857	09	07	62	October 19 th 1857
Meanders	"	"	"	10	20	08	"
Total number of Acres	3767.88						

The above Map of Fractional Township N^o 22 South, of Range N^o 13 West, of the Willamette Meridian, Territory of Oregon is strictly conformable to the field notes of the survey thereof on file in this office which have been examined and approved.
 Surveyor General's Office,
 Salem, October 19th 1857.

(signed)
 John S. Zieber
 Sur. Gen. of Oregon.

Public Survey Office,
 Portland, Oregon,
 December 1, 1931.
 I certify the above to be a correct copy of the original plat on file in this office.
 Joseph A. Gausong
 Office Cadastral Engineer.