

Survey accepted Aug. 27, 1919
G. L. O.

Plat of
**HOMESTEAD
ENTRY SURVEY**
No. **213**
in the
SIUSLAW
NATIONAL FOREST
in
Section 1, surveyed, T. 22 S., R. 11 W.
of the
WILLAMETTE MERIDIAN
OREGON

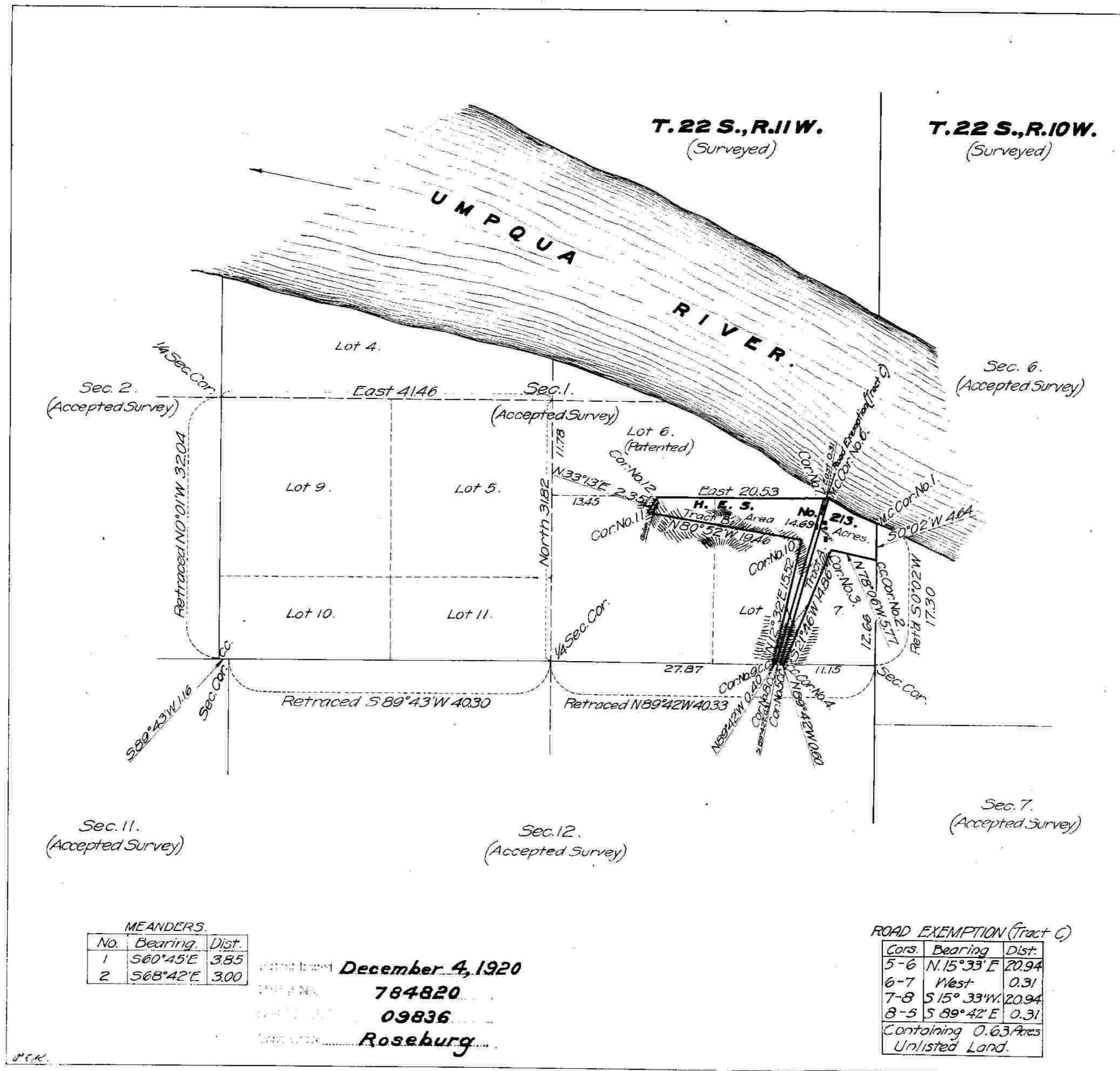
This plat of Homestead Entry Survey No. 213 State of OREGON is strictly conformable to the field notes thereof on file in this office, which have been examined and approved.

U.S. Surveyor General's Office

Portland, Oregon,

April 23, 1918

Ewardell W. Withy
U.S. Surveyor General



MEANDERS.

No.	Bearing	Dist.
1	S 60° 45' E	3.85
2	S 68° 42' E	3.00

Patented December 4, 1920

784820

09836

Roseburg

ROAD EXEMPTION (Tract C)

Cors.	Bearing	Dist.
5-6	N. 15° 33' E	20.94
6-7	West	0.31
7-8	S 15° 33' W	20.94
8-5	S 89° 42' E	0.31

Containing 0.63 Acres
Unlisted Land.

SCALE 10 chains to 1 inch

Surveys Designated	By whom Surveyed	Inst. Cont. Group		When Surveyed		Date of Approval
		No.	Date	Began	Completed	
H.E. Survey No. 213	Ben. A. Eddy for Rand	213	Feb. 24, 1917	Aug. 27, 1917	Sept. 3, 1917	Apr. 23, 1918
Meanders Umpqua River	W. H. Byars, D.S.	202	Mar. 11, 1874	in 1874		Aug. 20, 1875
E. 1st Ely. and Portion of Subdiv. T. 22 S., R. 11 W.	Wm. R. Whipple, D.S.	612	Apr. 28, 1893	in 1894		June 24, 1895

Areas in Acres		
H.E. Survey No. 213	ROAD EXEMPTION	
In Tract A	5.85	(Unlisted Land)
In Tract B	8.84	Tract C 0.63
In Section		Unlisted Land - S. portion Cont.
In Section		In Tract A 0.57
Total	14.69	In Tract B 0.36

Act of June 11, 1906	Act of March 4, 1907
Last No. 8416	Dated 1918
Latitude 45° 1'	Observations at
Longitude 123° 54'	Corner No.
Mean Mag. Decl. 1904	