

# TOWNSHIP 22 SOUTH, RANGE II WEST, OF THE WILLAMETTE MERIDIAN, OREGON

## DEPENDENT RESURVEY, SUBDIVISION OF SECTIONS 4, 5, AND 6, AND SURVEYS

FILED  
 Date 12-16-1999 By: JC  
 This survey consists of:  
 Map Vol 53  
 Narrative PG 20212-  
 Corner Ppt 20253

DOUGLAS COUNTY  
 SURVEYOR

Sec 31

Sec 32

Sec 33

Latitude 43°41'32.699"N  
 Longitude 124°01'47.507"W  
 (NAD 1983 (91))

Resurveyed by Boyd W Peterson and Richard L Sanford  
 concurrently under this same group

Resurveyed by  
 Deborah M Stephens  
 and Harvey E Wofford  
 in 1990-95

Resurveyed by  
 Boyd W Peterson  
 and Richard L Sanford,  
 concurrently under  
 this same group

Resurveyed by John A Farmer

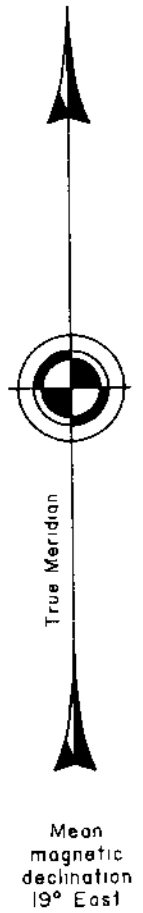
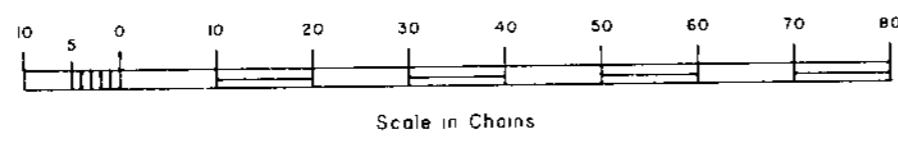
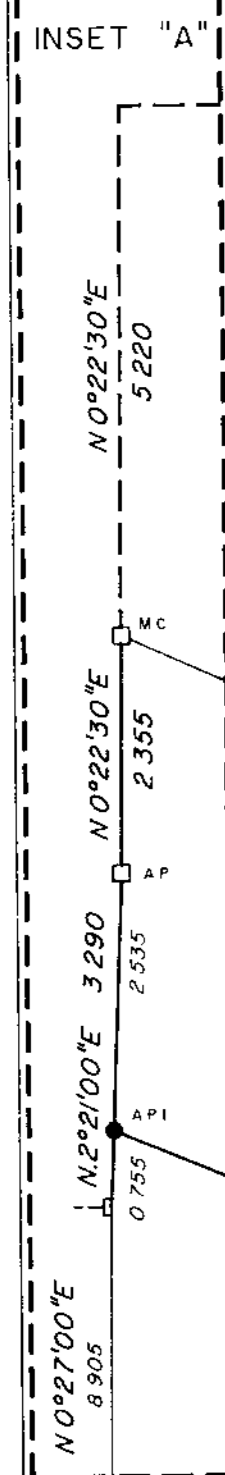
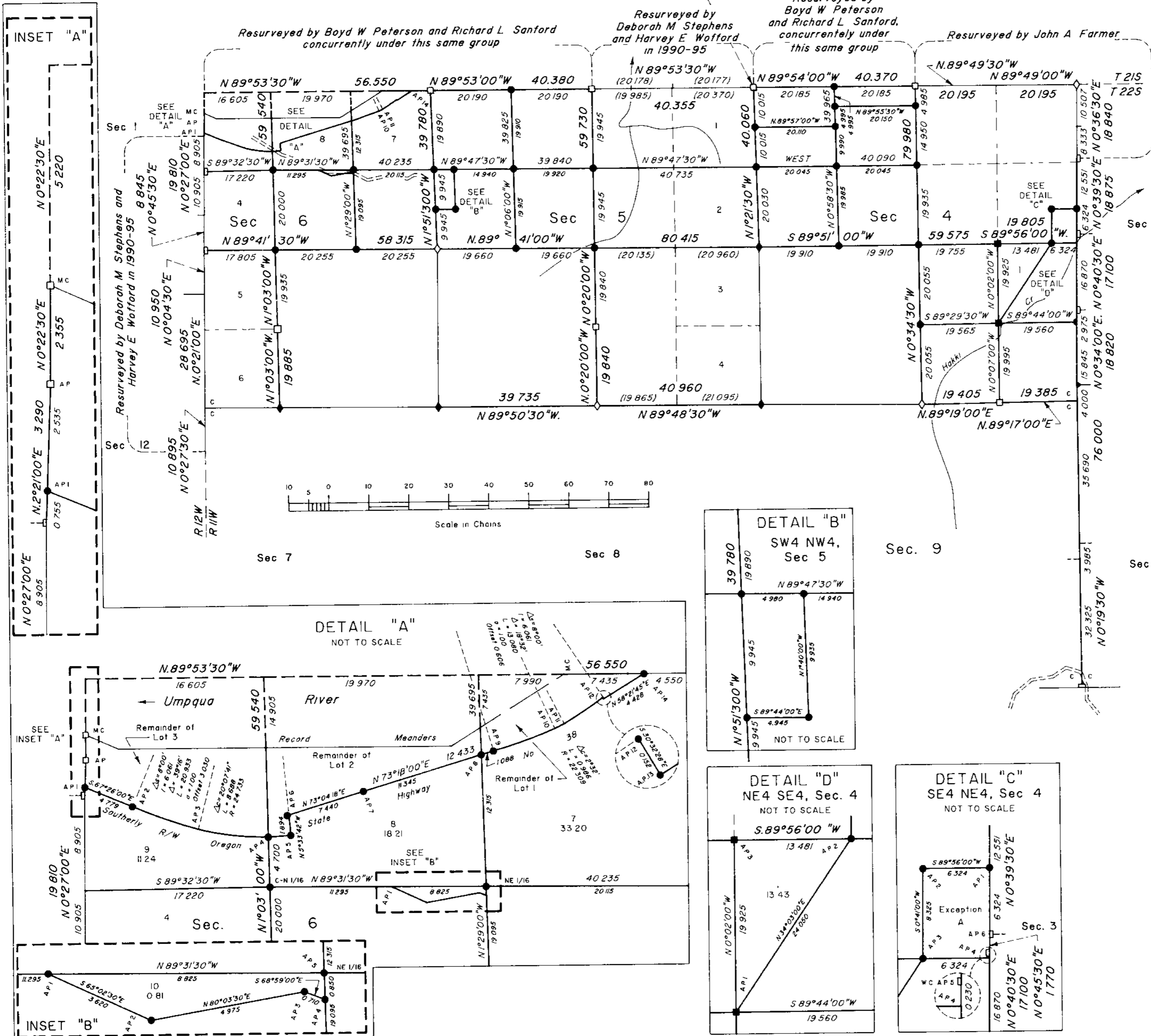
A history of surveys is contained in the field notes

This plat represents a dependent resurvey of a portion of the west boundary and subdivisional lines, T 22 S, R II W, Willamette Meridian, Oregon, designed to restore the corners in their true original locations according to the best available evidence, the subdivision of sections 4, 5, and 6, and the metes-and-bounds surveys in sections 4 and 6

Except as shown hereon, the lottings and areas are as shown on the plat approved August 2, 1875 and June 24, 1895

The survey was executed by Boyd W Peterson, Cadastral Surveyor, and Richard L Sanford, Surveying Technician, beginning April 24, 1992, and completed May 1, 1996, pursuant to Special Instructions dated April 16, 1992, under Group Number 1644, Oregon

Timber in this area consists of fir, hemlock, cedar, maple, alder, madrone, myrtle, and hickory



Mean magnetic declination 19° East

**LEGEND**

- ◊ Original corner previously remonumented
- ◆ Original corner remonumented this survey
- Corner previously established or reestablished
- Corner previously established or reestablished, remonumented this survey
- Corner established or reestablished this survey

UNITED STATES DEPARTMENT OF THE INTERIOR  
 BUREAU OF LAND MANAGEMENT

Portland, Oregon August 9, 1999

This plat is strictly conformable to the approved field notes, and the survey, having been correctly executed in accordance with the requirements of law and the regulations of this Bureau, is hereby accepted.

For the Director  
*Wayne M. Anderson*  
 Chief Cadastral Surveyor of Oregon

