

TOWNSHIP 22 SOUTH, RANGE 10 WEST, OF THE WILLAMETTE MERIDIAN, OREGON

This survey consists of: Map: PLAT: T22-10 2016-1 A-B Narrative: VOL 58 Corner Rpt: PGS 23319-23320 ALL INFORMATION IS ON THE PLAT DOUGLAS COUNTY SURVEYOR SHEET 1 OF 2

DEPENDENT RESURVEY

This plat constitutes the entire record of the dependent resurvey of a portion of the subdivisional lines, designed to restore the corners in their true original locations according to the best available evidence, Township 22 South, Range 10 West, Willamette Meridian, Oregon.

The history of official surveys pertaining to this survey is as follows:

In 1877, William H. Byars, U.S. Deputy Surveyor, surveyed a portion of the subdivisional lines, as shown on the official plat of survey approved June 21, 1878.

In 1894, Aurelius Todd, U.S. Deputy Surveyor, surveyed the remainder of the subdivisional lines, as shown on the official plat of survey approved March 3, 1896.

In 1970, James E. Jelley, Cadastral Surveyor, surveyed a portion of the subdivisional lines, as shown on the official plat of survey accepted March 19, 1975.

The directions of the lines are based on the true meridian as determined by Global Positioning System (GPS) techniques and carried forward by sustained angulation using conventional survey techniques. All measurements along the lines were derived through the use of electronic measuring equipment. Measured distances and directions have been adjusted by computer software that incorporates a least squares adjustment routine. The adjusted mean bearings and mean horizontal ground elevation distances are reported to the nearest second and 0.01 foot.

The lottings and areas are as shown on the plats approved June 21, 1878, and March 3, 1896.

Preliminary to the resurvey, the lines of the official original surveys and resurveys were retraced and a search was made for all corners, lines, other calls of record, and where available, collateral evidence of local surveys and corners. Identified corners were perpetuated in their original positions. The retracement data was thoroughly verified and only the true line field data are given hereon.

Each new bearing tree has a 2 1/2 inch x 1/4 inch magnetic nail (Mag Nail) driven at the base on right side center, unless otherwise noted in the corner description. Only those lines bounding Federal interest land were blazed.

The geographic position shown hereon was determined by a tie from a temporary GPS control point utilizing dual frequency, carrier phase GPS receivers, and processed using the National Geodetic Survey's Online Positioning User Service (OPUS).

The survey was executed in accordance with the specifications set forth in the Manual of Surveying Instructions (2009), and the special instructions approved April 11, 2014, for Group No. 2750, Oregon, by Edith M. Forkner, Cadastral Surveyor, beginning April 14, 2014, and completed May 22, 2014. She was assisted by Jason H. Blum and Keith G. Felker, Surveying Technicians.

UNITED STATES DEPARTMENT OF THE INTERIOR BUREAU OF LAND MANAGEMENT

Portland, Oregon

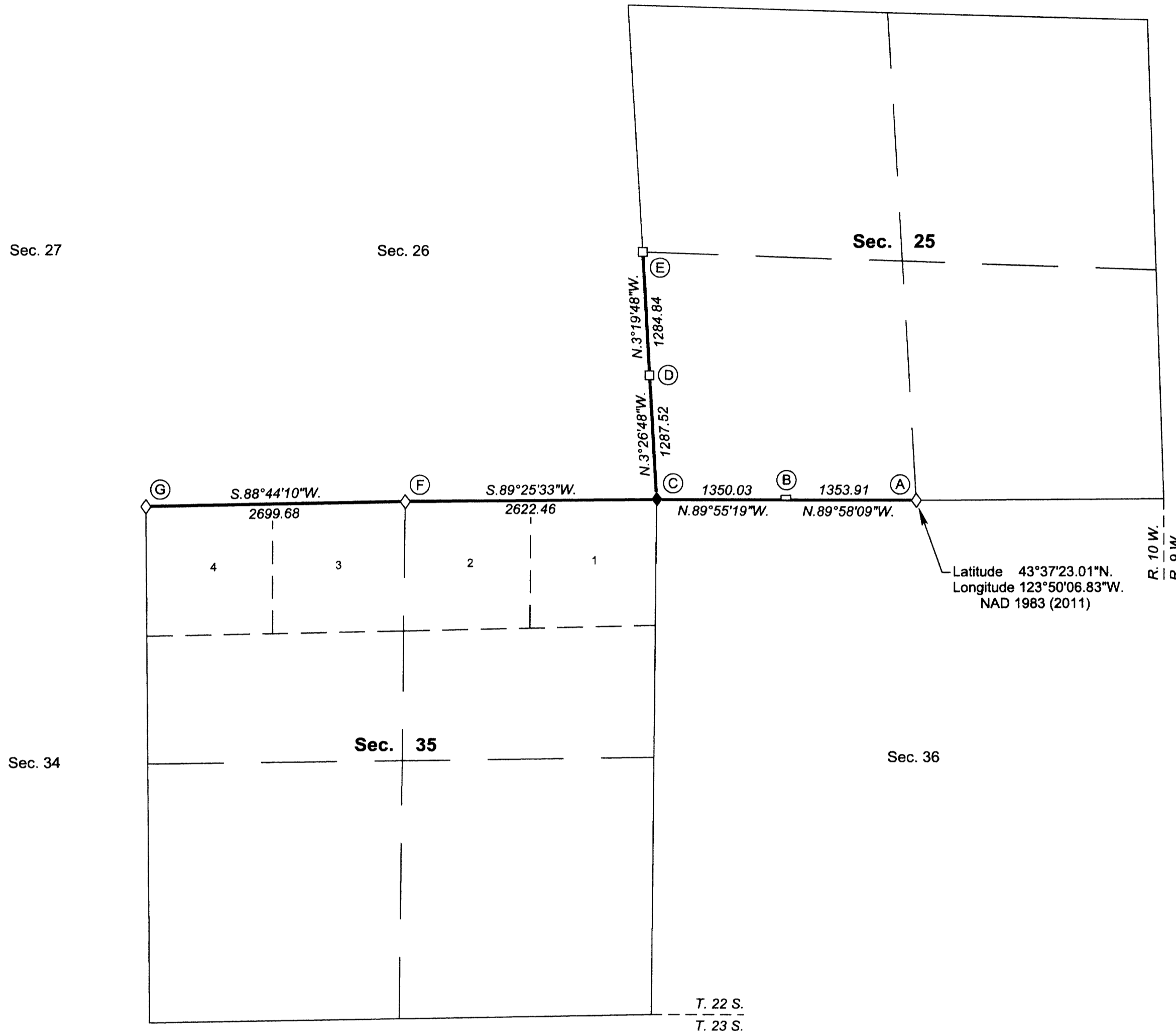
The survey represented by this plat, having been correctly executed in accordance with the requirements of law and the regulations of this Bureau, is hereby accepted.

For the Director Mary J. M. Hart Chief Cadastral Surveyor of Oregon

October 23, 2015

Date

OFFICIALLY FILED: 1/13/2016



I, Edith M. Forkner, Cadastral Surveyor, HEREBY CERTIFY upon honor, that in pursuance of special instructions bearing the approval date of the 11th day of April, 2014, and the assignment instructions bearing the date of the 11th day of April, 2014, I have dependently resurveyed a portion of the subdivisional lines, Township 22 South, Range 10 West, Willamette Meridian, Oregon, which is represented upon this plat as having been executed by me and under my direction; and that said survey has been made in strict conformity with said special instructions, the Manual of Surveying Instructions, and in the specific manner described on this plat.

Edith M. Forkner Cadastral Surveyor

10-7-15 Date

LEGEND: Original corner previously remonumented (diamond symbol), Original corner remonumented this survey (filled diamond symbol), Corner previously established or reestablished (square symbol)

