

Date: 3/21/2016 By: JC

This survey consists of:

Map: PLAT: T22-10 2016-1 A-B

NO LINE NOTES VOL 58

Narrative: VOL 58

Corner Rpt: PGS 23319-23320

ALL INFORMATION IS ON THE PLAT

DOUGLAS COUNTY

SURVEYOR

SHEET 1 OF 2

TOWNSHIP 22 SOUTH, RANGE 10 WEST, OF THE WILLAMETTE MERIDIAN, OREGON

DEPENDENT RESURVEY

This plat constitutes the entire record of the dependent resurvey of a portion of the subdivisional lines, designed to restore the corners in their true original locations according to the best available evidence, Township 22 South, Range 10 West, Willamette Meridian, Oregon.

The history of official surveys pertaining to this survey is as follows:

In 1877, William H. Byars, U.S. Deputy Surveyor, surveyed a portion of the subdivisional lines, as shown on the official plat of survey approved June 21, 1878.

In 1894, Aurelius Todd, U.S. Deputy Surveyor, surveyed the remainder of the subdivisional lines, as shown on the official plat of survey approved March 3, 1896.

In 1970, James E. Jelley, Cadastral Surveyor, surveyed a portion of the subdivisional lines, as shown on the official plat of survey accepted March 19, 1975.

The directions of the lines are based on the true meridian as determined by Global Positioning System (GPS) techniques and carried forward by sustained angulation using conventional survey techniques. All measurements along the lines were derived through the use of electronic measuring equipment. Measured distances and directions have been adjusted by computer software that incorporates a least squares adjustment routine. The adjusted mean bearings and mean horizontal ground elevation distances are reported to the nearest second and 0.01 foot.

The lottings and areas are as shown on the plats approved June 21, 1878, and March 3, 1896.

Preliminary to the resurvey, the lines of the official original surveys and resurveys were retraced and a search was made for all corners, lines, other calls of record, and where available, collateral evidence of local surveys and corners. Identified corners were perpetuated in their original positions. The retracement data was thoroughly verified and only the true line field data are given hereon.

Each new bearing tree has a 2 1/2 inch x 1/4 inch magnetic nail (Mag Nail) driven at the base on right side center, unless otherwise noted in the corner description. Only those lines bounding Federal interest land were blazed.

The geographic position shown hereon was determined by a tie from a temporary GPS control point utilizing dual frequency, carrier phase GPS receivers, and processed using the National Geodetic Survey's Online Positioning User Service (OPUS).

The survey was executed in accordance with the specifications set forth in the Manual of Surveying Instructions (2009), and the special instructions approved April 11, 2014, for Group No. 2750, Oregon, by Edith M. Forkner, Cadastral Surveyor, beginning April 14, 2014, and completed May 22, 2014. She was assisted by Jason H. Blum and Keith G. Felker, Surveying Technicians.

UNITED STATES DEPARTMENT OF THE INTERIOR
BUREAU OF LAND MANAGEMENT

Portland, Oregon

The survey represented by this plat, having been correctly executed in accordance with the requirements of law and the regulations of this Bureau, is hereby accepted.

For the Director

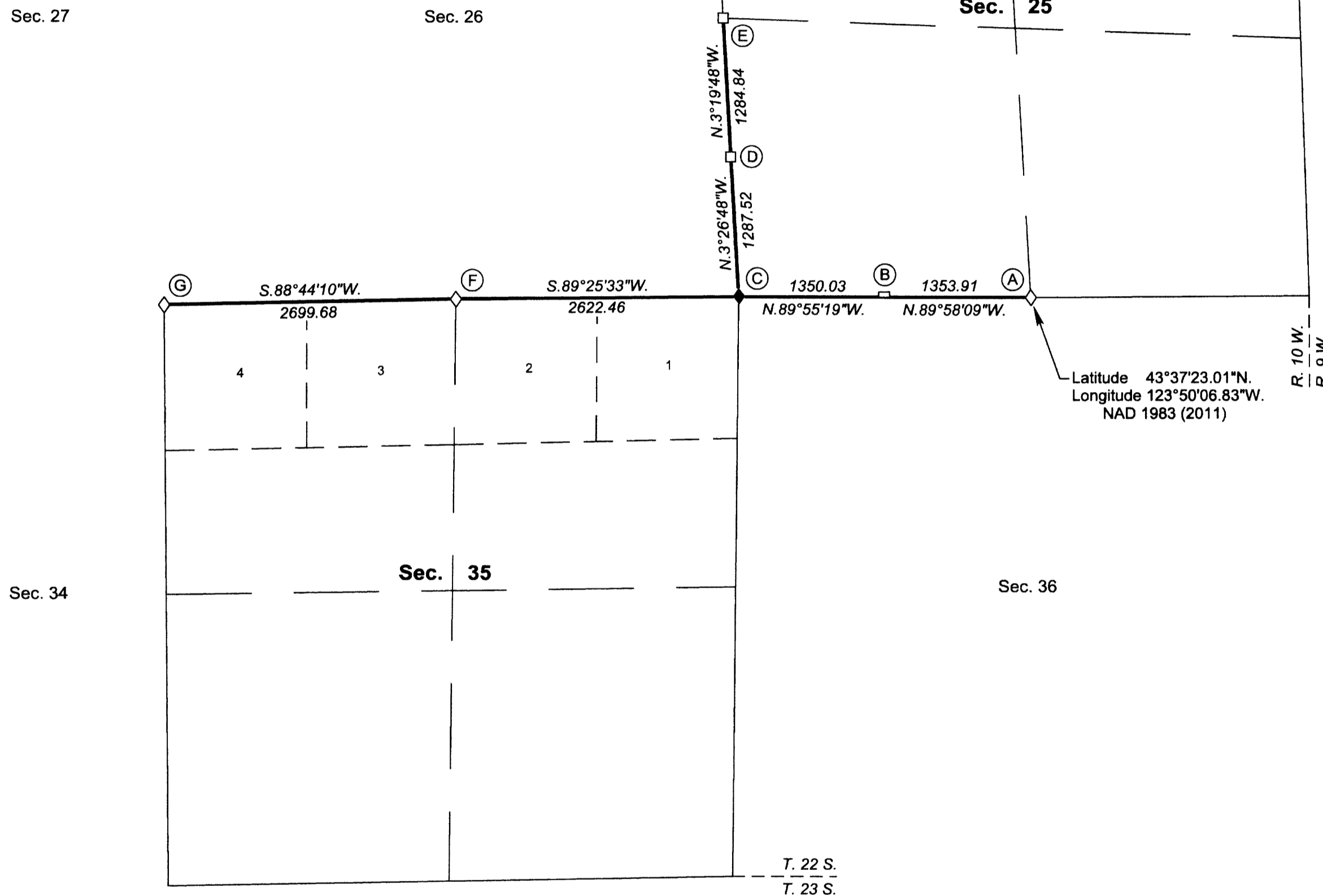
Mary J. M. Hartel

Chief Cadastral Surveyor of Oregon

October 23, 2015

Date

OFFICIALLY FILED: 1/13/2016



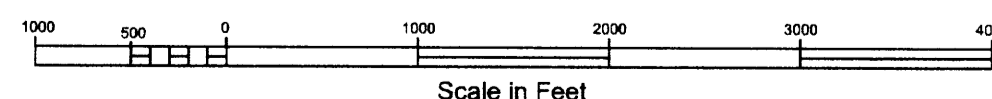
I, Edith M. Forkner, Cadastral Surveyor, HEREBY CERTIFY upon honor, that in pursuance of special instructions bearing the approval date of the 11th day of April, 2014, and the assignment instructions bearing the date of the 11th day of April, 2014, I have dependently resurveyed a portion of the subdivisional lines, Township 22 South, Range 10 West, Willamette Meridian, Oregon, which is represented upon this plat as having been executed by me and under my direction; and that said survey has been made in strict conformity with said special instructions, the Manual of Surveying Instructions, and in the specific manner described on this plat.

Edith M. Forkner
Cadastral Surveyor

10-7-15
Date

LEGEND

- ◇ Original corner previously remonumented
- ◆ Original corner remonumented this survey
- Corner previously established or reestablished



TOWNSHIP 22 SOUTH, RANGE 10 WEST, OF THE WILLAMETTE MERIDIAN, OREGON

DEPENDENT RESURVEY

(A) The 1/4 sec. cor. of secs. 25 and 36, monumented with an iron post, 2 1/2 ins. diam., firmly set, projecting 7 ins. above a mound of stone, 4 ft. base, 1 ft. high, with a brass cap mkd.

S 25
1/4 ———
S 36
T 22 S R 10 W
1970

from which the remains of the original bearing trees

A decayed fir stump, 56 ins. diam., bears N. 76° E., 17.8 ft. dist., no marks visible.

A decayed fir stump, 39 ins. diam., bears S. 66 1/2° E., 37.0 ft. dist., no marks visible.

and new accessories

A fir, 13 ins. diam., bears N. 53° E., 4.0 ft. dist., mkd. 1/4 S25 BT.

A sandstone boulder, 7 x 5 x 5 ft., bears S. 41 1/2° W., 23.8 ft. dist., to a Mag Nail pounded flush with the surface in the center of a chiseled X and BO above.

The bearing object mkd. by Jelley, in 1970, was recovered with no marks visible.

Drive an aluminum angle iron alongside the cor.

(B) The W 1/16 sec. cor. of sec. 25 only, on the N. bdy. of sec. 36, monumented with a brass tablet, 3 1/4 ins. diam., firmly set in a rock face, with top mkd.

W 1/16 S 25
1970

from which the bearing trees mkd. by Jelley in 1970

A fir, 23 ins. diam., bears N. 7° E., 29.7 ft. dist., with axe marks — and a healed blaze at breast height.

A fir, 14 ins. diam., bears N. 45 3/4° E., 18.2 ft. dist., with a healed blaze.

An iron rod, 1/2 in. diam., 30 ins. long, with International Paper property sign, was found lying loose alongside the cor. Drive an aluminum angle iron 5 ft. E. of the cor.

(C) The cor. of secs. 25, 26, 35, and 36, monumented with the remains of the original cor. tree, a decayed fir stump, 32 ins. diam., no marks visible, from which the remains of a bearing tree mkd. by Todd in 1894

A decayed fir stump, 23 ins. diam., bears S. 57 3/4° W., 54.1 ft. dist., no marks visible. (Record, S. 61° W.)

and the reference monuments mkd. by Jelley in 1970

An iron post, 2 1/2 ins. diam., firmly set, projecting 6 ins. above ground, bears N. 30° 09' 30" E., 9.90 ft. dist., with a brass cap mkd. T22S R10W S25 RM 1970 and an arrow pointing to the cor. (Record, N. 26 1/2° E.) A steel fence post is alongside.

An iron post, 2 1/2 ins. diam., firmly set, with top flush with the surface of the ground, bears N. 59° 55' 37" W., 10.89 ft. dist., with a brass cap mkd. T22S R10W S26 RM 1970 and an arrow pointing to the cor. (Record, N. 57 1/4° W.)

At the corner point

Saw the cor. tree stump down to 6 ins. above ground and drive an iron rod, 31 ins. long, 5/8 in. diam., 30 ins. in the center of the stump, with an aluminum cap mkd.

T 22 S R 10 W
S 26 | S 25
S 35 | S 36
2014

from which new bearing trees

A fir, 14 ins. diam., bears S. 20 3/4° E., 99.8 ft. dist., mkd. T22S R10W S36 BT.

An alder, 14 ins. diam., bears S. 44° W., 48.0 ft. dist., mkd. T22S 10W S35 BT on bark.

The bearing objects mkd. by Jelley were recovered with no marks visible.

Drive an aluminum angle iron into the stump alongside the cor.

(D) The S 1/16 sec. cor. of secs. 25 and 26, monumented with an iron post, 2 1/2 ins. diam., firmly set, projecting 1 in. above ground, with a brass cap mkd.

S 1/16
S 26 | S 25
T 22 S R 10 W
1970

from which a bearing tree mkd. by Jelley in 1970

A fir, 21 ins. diam., bears N. 83° W., 42.2 ft. dist., with a healed blaze at waist height. Tree is located behind a double fir, 16 ins. diam., 14 ft. dist. from cor.

and a new bearing tree

A fir, 16 ins. diam., bears S. 47 1/2° E., 12.0 ft. dist., mkd. S1/16 S25 BT.

Drive an aluminum angle iron alongside the cor.

(E) The 1/4 sec. cor. of secs. 25 and 26, monumented with a brass tablet, 3 1/4 ins. diam., firmly set in a nearly vertical rock face, with top mkd.

1/4
S 26 | S 25
T 22 S R 10 W
1970

from which the remains of the bearing trees mkd. by Jelley in 1970

A decayed fir stump, size indeterminate, bears S. 33 1/4° E., 12.3 ft. dist., no marks visible. (Record, S. 40° E., 11.2 ft. dist.)

A yew, 9 ins. diam., bears S. 64 1/2° W., 11.2 ft. dist., with scribe marks 1/4 and other illegible scribe marks visible on partially healed blaze. (Record, S. 71° W.)

and a new bearing tree

A pistol-butt hemlock, 11 ins. diam., bears S. 46 1/2° E., 26.5 ft. dist., mkd. 1/4 S25 BT.

Drive an aluminum angle iron 15 ft. S. of the cor.

(F) The 1/4 sec. cor. of secs. 26 and 35, monumented with an iron post, 2 1/2 ins. diam., firmly set, with top flush with the surface of the ground, with a brass cap mkd.

S 26
1/4 ———
S 35
T 22 S R 10 W
1970

from which the remains of an original bearing tree

A decayed cedar snag, 75 ins. diam., bears S. 85° E., 52.8 ft. dist., with no marks visible on open blaze.

and a bearing tree mkd. by Jelley in 1970

A fir, 34 ins. diam., bears N. 14° E., 85.8 ft. dist., with a healed blaze.

and a new bearing tree

An alder, 13 ins. diam., bears S. 78 1/4° E., 41.8 ft. dist., mkd. 1/4 S35 BT on bark.

Drive an aluminum angle iron alongside the cor., which is located 20 ft. S. of a creek, 1 ft. wide, course W.

(G) The cor. of secs. 26, 27, 34, and 35, monumented with an iron post, 2 1/2 ins. diam., firmly set, projecting 2 ins. above ground, with a brass cap mkd.

T 22 S R 10 W
S 27 | S 26
S 34 | S 35
1970

from which the remains of the original bearing trees

A fir, 50 ins. diam., bears S. 70° E., 5.3 ft. dist., with no marks visible on partially healed blaze at breast height.

A fir, 51 ins. diam., bears S. 8° W., 23.1 ft. dist., with a healed blaze at breast height.

A fir snag, 51 ins. diam., bears N. 9° W., 44.9 ft. dist., with a healed blaze at breast height. (Record, N. 14° W.)

and a bearing tree mkd. by person(s) unknown

A fir, 58 ins. diam., bears N. 76° E., 29.7 ft. dist., with a healed blaze at breast height.

and a bearing tree mkd. by Jelley in 1970

A fir, 19 ins. diam., bears N. 8° E., 35.6 ft. dist., with a small healed blaze at breast height and a healed blaze at base with illegible scribe marks on the bark along the left side.

There are no new bearing trees available in sec. 27 within limits. Drive an aluminum angle iron alongside the cor.

UNITED STATES DEPARTMENT OF THE INTERIOR
BUREAU OF LAND MANAGEMENT

Portland, Oregon

The survey represented by this plat, having been correctly executed in accordance with the requirements of law and the regulations of this Bureau, is hereby accepted.

For the Director

Mary J. M. Hartzel

Chief Cadastral Surveyor of Oregon

October 23, 2015

Date

OFFICIALLY FILED: 1/13/2016