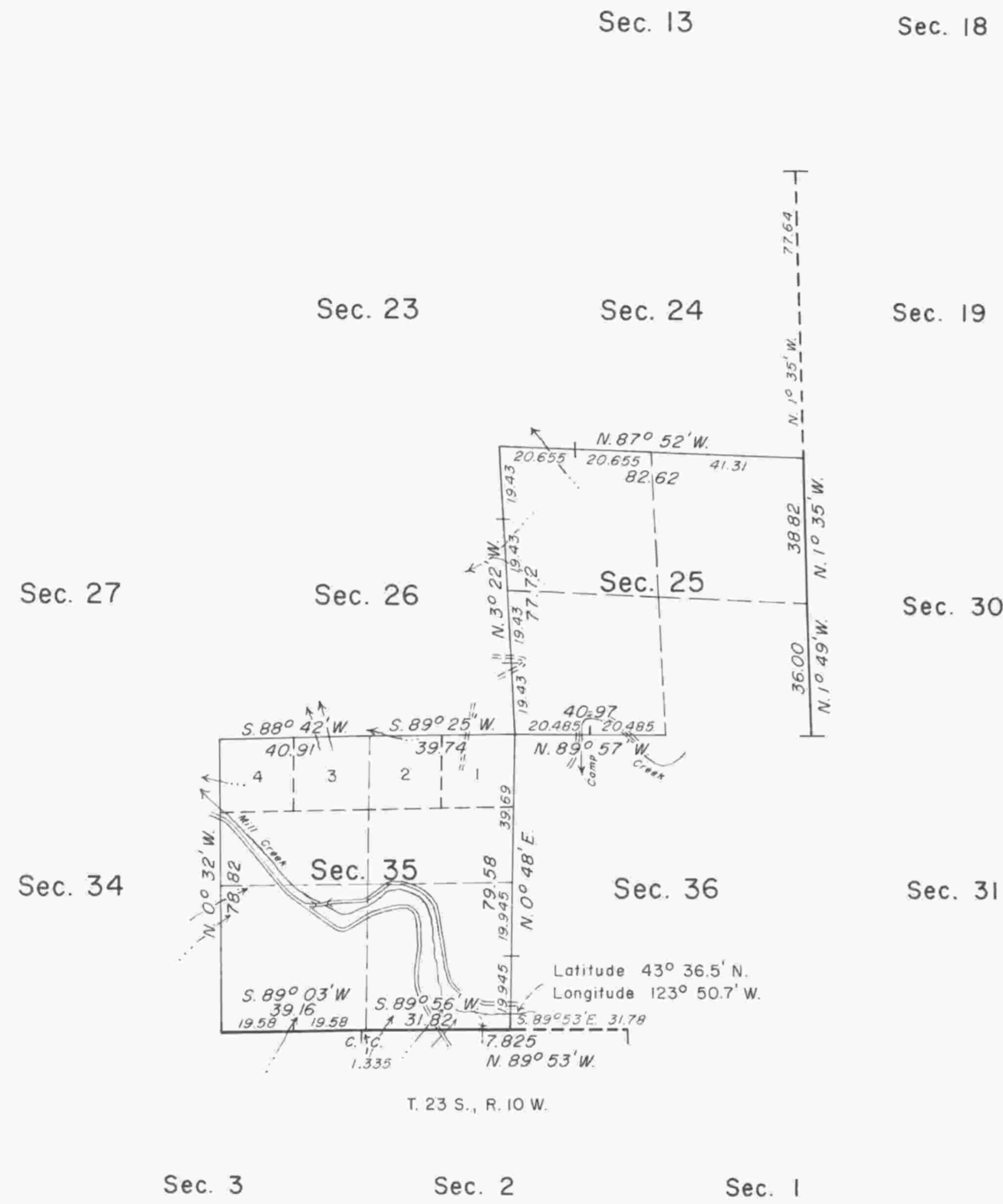


TOWNSHIP 22 SOUTH, RANGE 10 WEST, OF THE WILLAMETTE MERIDIAN, OREGON.

DEPENDENT RESURVEY



MEAN
MAGNETIC
DECLINATION
20° 22' E.



A history of surveys is contained in the field notes.

This plat represents a retracement and reestablishment of a portion of the east and south boundaries and a portion of the subdivisional lines, designed to restore the corners in their true original locations according to the best available evidence, T. 22 S., R. 10 W., of the Willamette Meridian, Oregon.

The lottings and areas are as shown on plats approved August 14, 1878 and March 3, 1896.

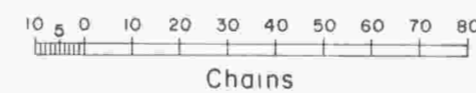
These surveys were executed by James E. Jelley, Cadastral Surveyor, from June 22, 1970 to August 7, 1970, pursuant to Special Instructions dated June 15, 1970, under Group No. 718, Oregon.

UNITED STATES DEPARTMENT OF THE INTERIOR
BUREAU OF LAND MANAGEMENT
Washington, D.C. March 19, 1975

This plat is strictly conformable to the approved field notes, and the survey, having been correctly executed in accordance with the requirements of law and the regulations of this Bureau, is hereby accepted.

For the Director

Chief, Division of Cadastral Survey



Timber in this area consists of fir, hemlock, cedar, oak, maple, alder, myrtle, chinquapin, dogwood and madrone.