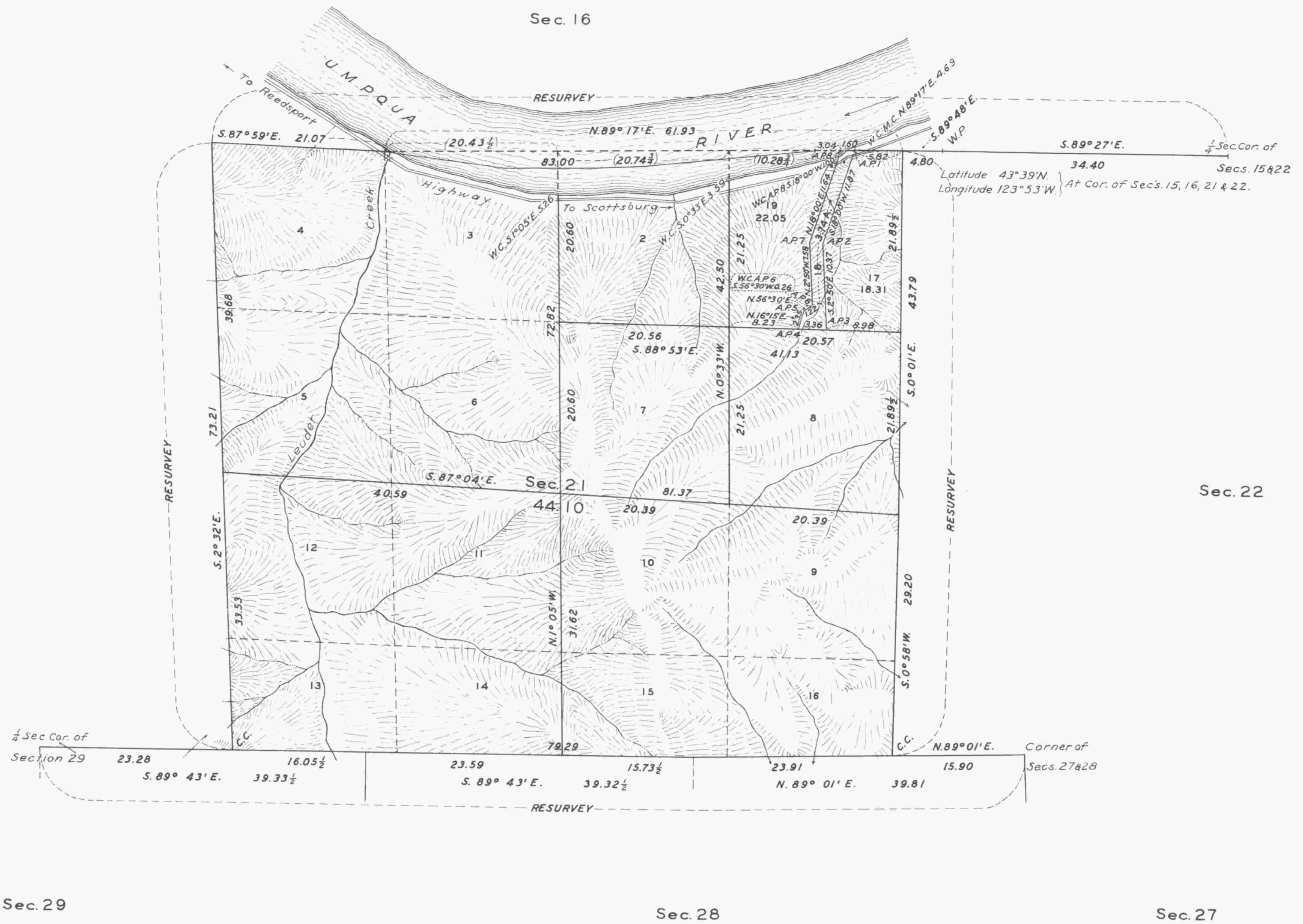


TOWNSHIP No. 22 SOUTH, RANGE No. 10 WEST, OF THE WILLAMETTE MERIDIAN, OREGON.

SEGREGATION SURVEY OF POWER PROJECT No. 605.



Mean Magnetic Declination 20°45'E. Scale: 10 Chains to an Inch.

LINES DESIGNATED	BY WHOM SURVEYED	GROUP		MILEAGE		WHEN SURVEYED	
		N ^o	DATE	MLS.	CHS.	BEGUN	COMPLETED
Subdivisional	Geo. F. Rigby	149	Aug. 9, 1932	7	64.69	June 9, 1936	June 26, 1936
Miscellaneous					76.06		

Office of U. S. Supervisor of Surveys,
 Denver, Colorado, April 19, 1937.
 The above plat of Township No. 22 South, Range No. 10 West,
 of the Willamette Meridian, Oregon, is strictly conformable
 to the field notes of the survey thereof which have been
 examined and approved.

William J. Carson
 U. S. Supervisor of Surveys.

DEPARTMENT OF THE INTERIOR
 GENERAL LAND OFFICE
 Washington, D. C., May 17, 1937.
 The survey represented by this plat
 having been correctly executed in accordance
 with the requirements of law and the regulations
 of this office, is hereby accepted.

Antoinette F. ...
 Assistant Commissioner.

BWS
 10/30