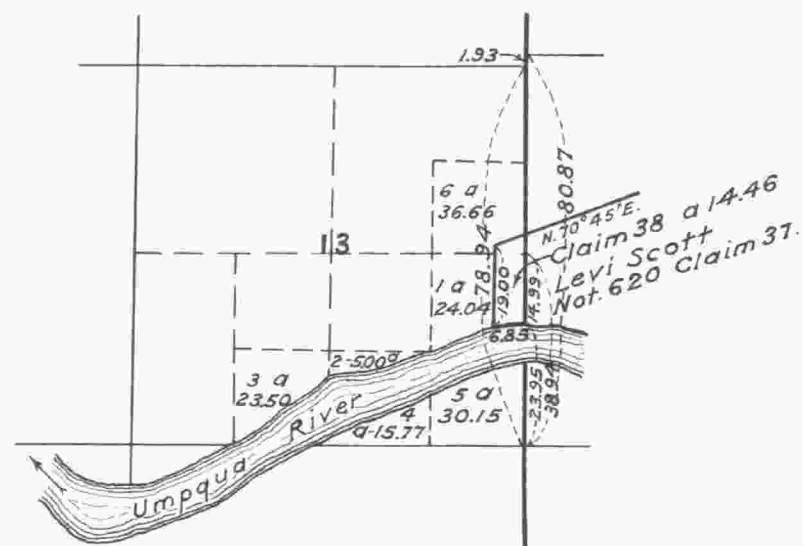


Township N<sup>o</sup> 22 South, Range N<sup>o</sup> 10 West of the Willamette Meridian, Oregon.



The above Map of Section 13, Township N<sup>o</sup> 22 South, Range N<sup>o</sup> 10 West, Willamette Meridian, Oregon, showing the area of Lot 6, is made to conform to the official Map of the Western Boundary of Levi Scott's Donation Claim on file in this Office, Approved Aug. 24, 1876; is correct, and is hereby approved.  
U. S. Surveyor General's Office,  
Portland Oregon, May 8, 1896.

(signed) John C. Arnold.  
Surr. Genl. for Oregon.

I certify the above to be a correct copy of the original tracing on file in this office.  
U. S. Surveyor General's Office,  
Portland Oregon, June 25, 1924.

Wesley M. Cassin  
U. S. Surveyor General.

Scale 40 Chains to an inch  
Mean Magnetic Declination

Surveys Designated	By Whom Surveyed	Group		Amount of Surveys			When Surveyed	
		No.	Date	Mls.	chs.	lks.	Begun	Completed

The above map of Township No. \_\_\_\_\_ Range No. \_\_\_\_\_ of the Meridian \_\_\_\_\_ is strictly conformable to the field notes of the survey thereof on file in this office, which have been examined and approved.

U. S. Surveyor General's Office.

Surveyor General.