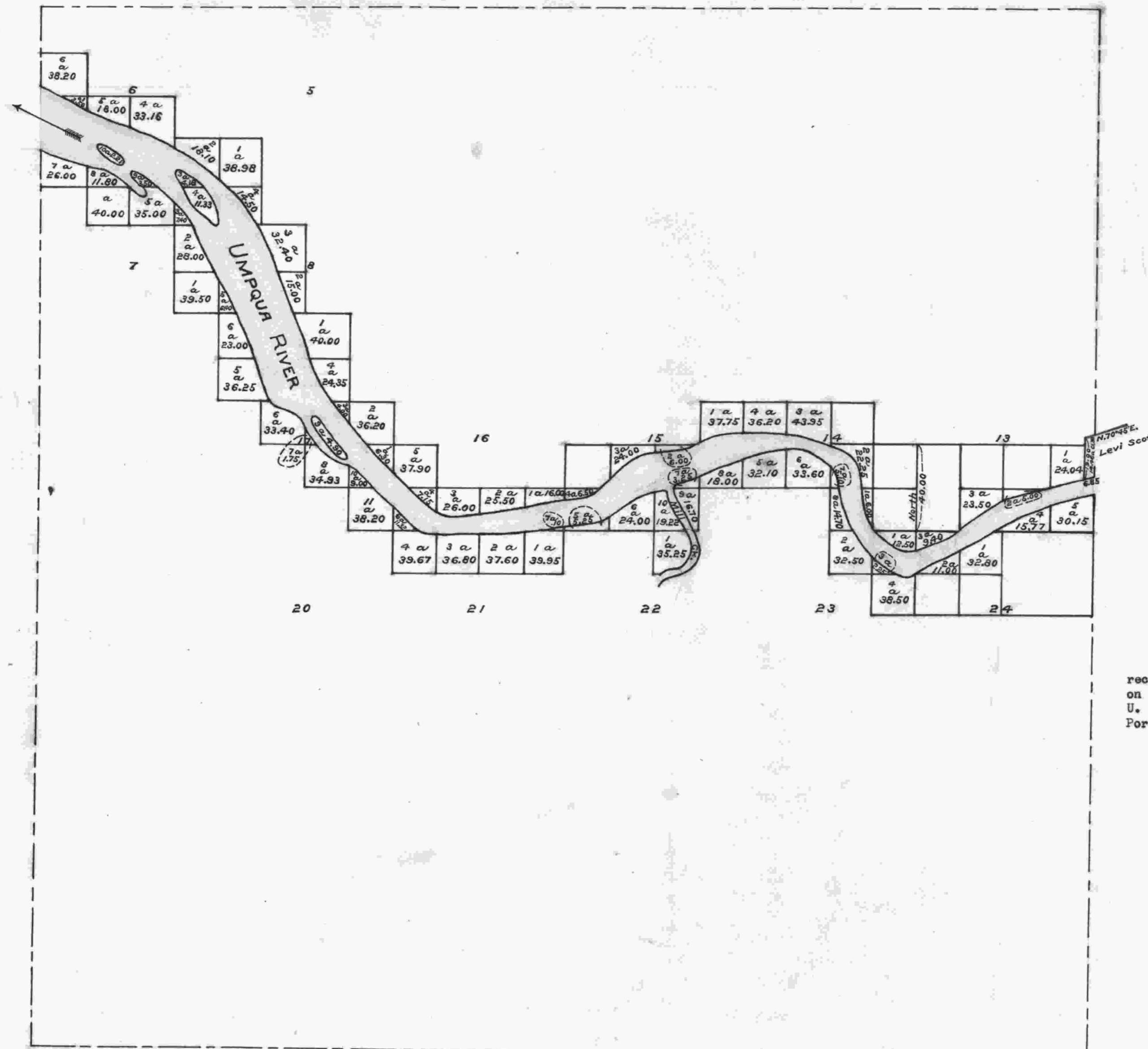


Township N^o 22 South Range N^o 10 West of the Willamette Meridian, Oregon



I certify this to be a correct copy of the original plat on file in this office.
 U. S. Surveyor General's Office
 Portland, Oregon, July 9th. 1924
Wesley M. Carvess
 Surveyor General of Oregon.

Scale 40 Chains to an inch
 Mean Magnetic Declination.

Surveys Designated	By Whom Surveyed	Group		Amount of Surveys		When Surveyed		
		No.	Date	Mls.	chs.	lks.	Begun	Completed

The above Map showing the line from the corner to sections 13, 14, 23 and 24 to the $\frac{1}{4}$ section corner between sections 13 and 14 and the lotting acreage adjoining the Western boundary of Levi Scotts Donation claim in sec. 13 all in T. 22 S. R. 10 W. Will. Mer. Or. is correct.
 U. S. Surveyor Generals Office (Signed)
 Portland Or. Augst 24, 1876
 Ben Simpson
 Sur. Gen'l of Or.

E.C.T.