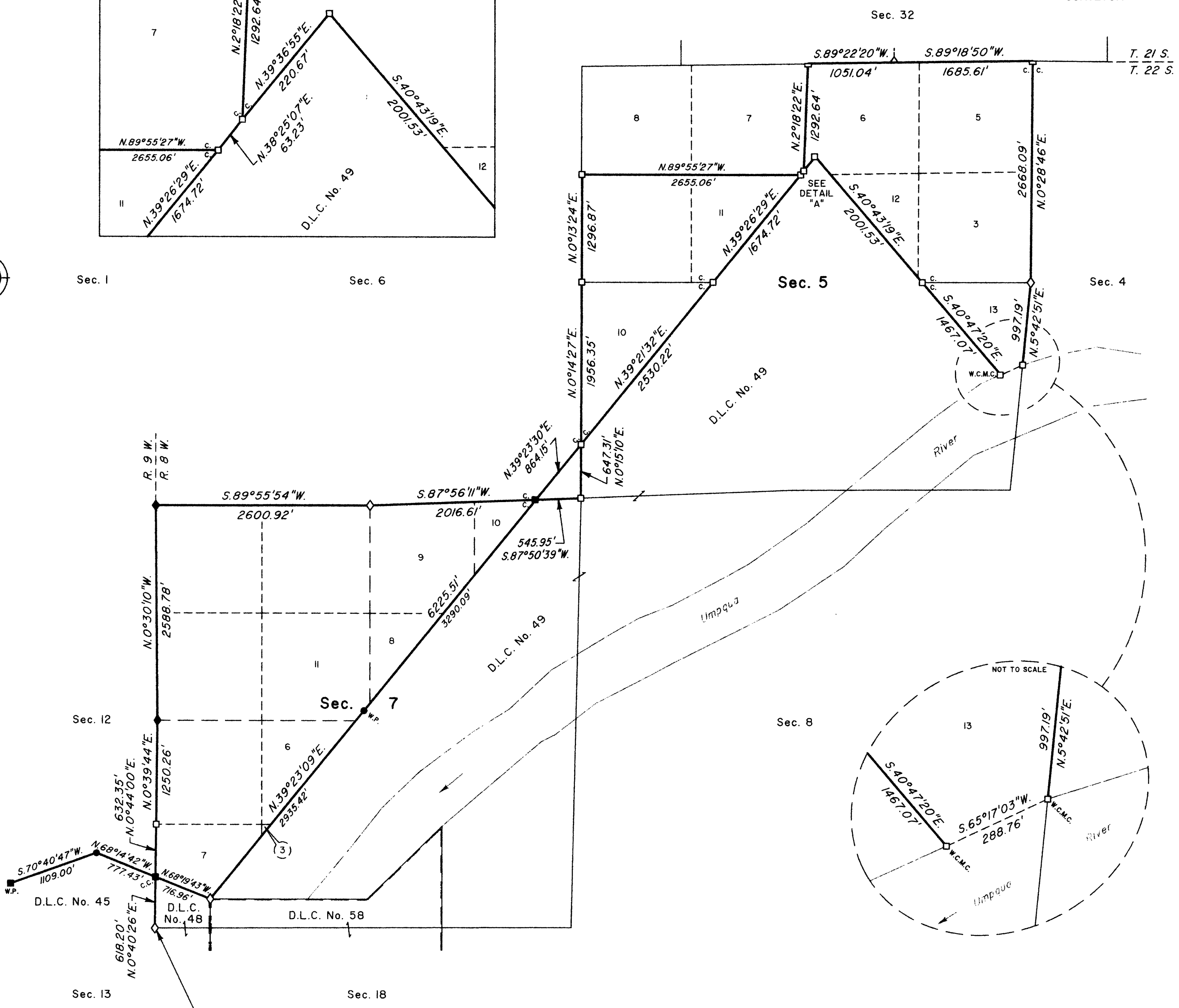
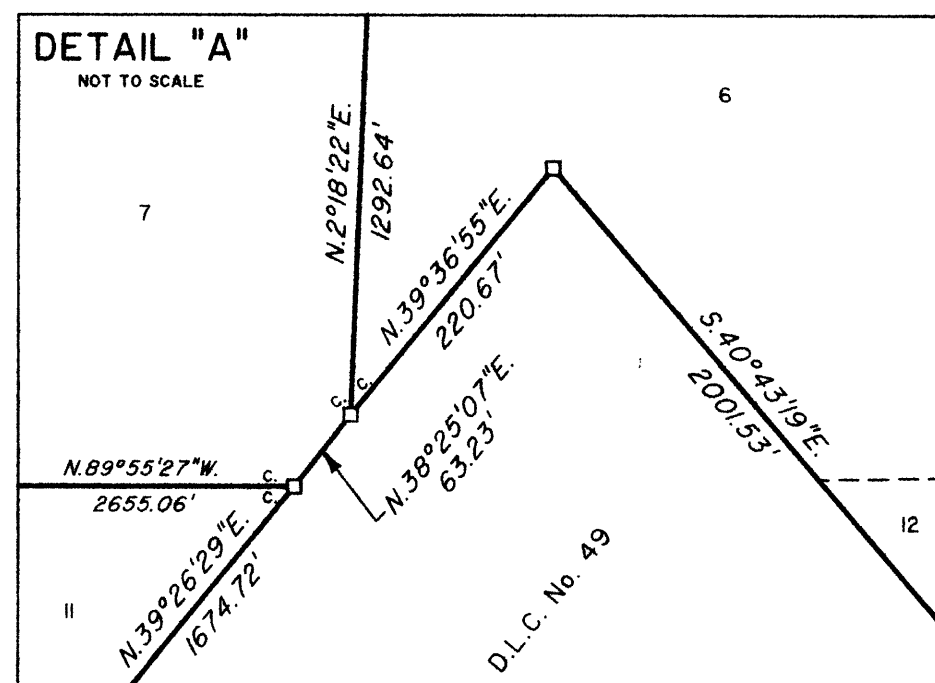


TOWNSHIP 22 SOUTH, RANGE 8 WEST, OF THE WILLAMETTE MERIDIAN, OREGON

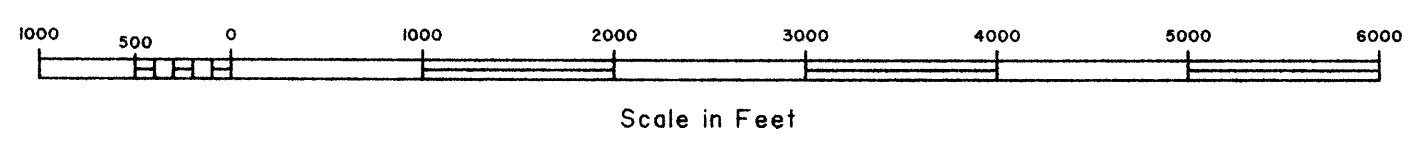
SHEET 1 OF 2

DEPENDENT RESURVEY AND SURVEY

FILED
 Date: 2/1/2010 By: JC
 This survey consists of:
 Map: VOL 56
 Narrative: PAGES 21928 - 58
 Corner Rpt:
 DOUGLAS COUNTY
 SURVEYOR



Latitude 43°39'53.95"N.
 Longitude 123°42'19.43"W.
 (NAD 1983 (2007))



A history of surveys is contained in the field notes.

This plat represents the dependent resurvey of a portion of the south boundary, T. 21 S., R. 8 W., the dependent resurvey of a portion of the west boundary, subdivisional lines, certain lines of Donation Land Claim Nos. 48 and 49, and a portion of the subdivision-of-section lines of section 5, T. 22 S., R. 8 W., and the dependent resurvey of certain lines of Donation Land Claim No. 45, T. 22 S., R. 9 W., Willamette Meridian, Oregon, designed to restore the corners in their true original locations according to the best available evidence, and the subdivision of section 11, T. 22 S., R. 8 W.

Measured distances and directions have been adjusted by computer software that incorporates a least squares adjustment routine. The adjusted bearings and distances are reported to the nearest second and 0.01 foot.

Actual quantity acreages have been returned for federal interest lands where indicated. The aliquot parts and lots will retain their designation even though the official acreage has changed. The aliquot part of a section will continue to be subdivided by legal subdivision in accordance with the Manual. When an area has been assigned a lot number, it may be further subdivided only by a supplemental plat or another official survey. The official lottings and areas of federal interest lands not affected by this survey are as shown on the plats approved August 11, 1881 and December 23, 1859, and the plats accepted March 24, 1966 and October 23, 1995.

The survey was executed by Aaron M. Graham, Cadastral Surveyor and Michael O. Jones, Surveying Technician, beginning April 4, 2008, and completed April 15, 2009, pursuant to Special Instructions dated April 2, 2007, under Group Number 2199, Oregon.

LEGEND

- ◊ Original corner previously remonumented
- ◆ Original corner remonumented this survey
- Corner previously established or reestablished
- Corner previously established or reestablished; remonumented this survey
- Corner established or reestablished this survey

UNITED STATES DEPARTMENT OF THE INTERIOR
 BUREAU OF LAND MANAGEMENT
 Portland, Oregon

This plat is strictly conformable to the approved field notes, and the survey, having been correctly executed in accordance with the requirements of law and the regulations of this Bureau, is hereby accepted.

For the Director
Mary J. M. Hantel
 Chief Cadastral Surveyor of Oregon

October 16, 2009
 Date

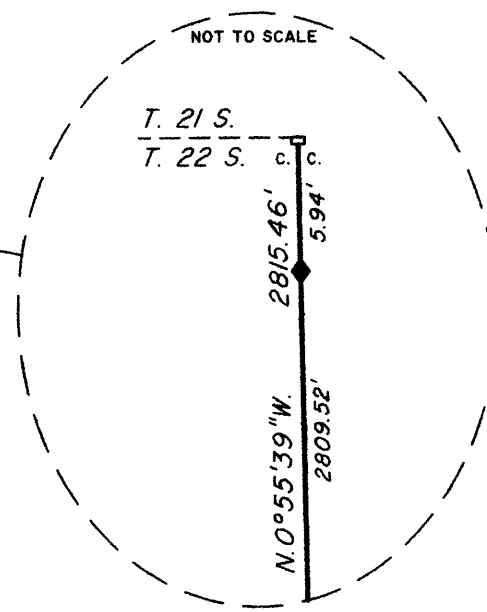
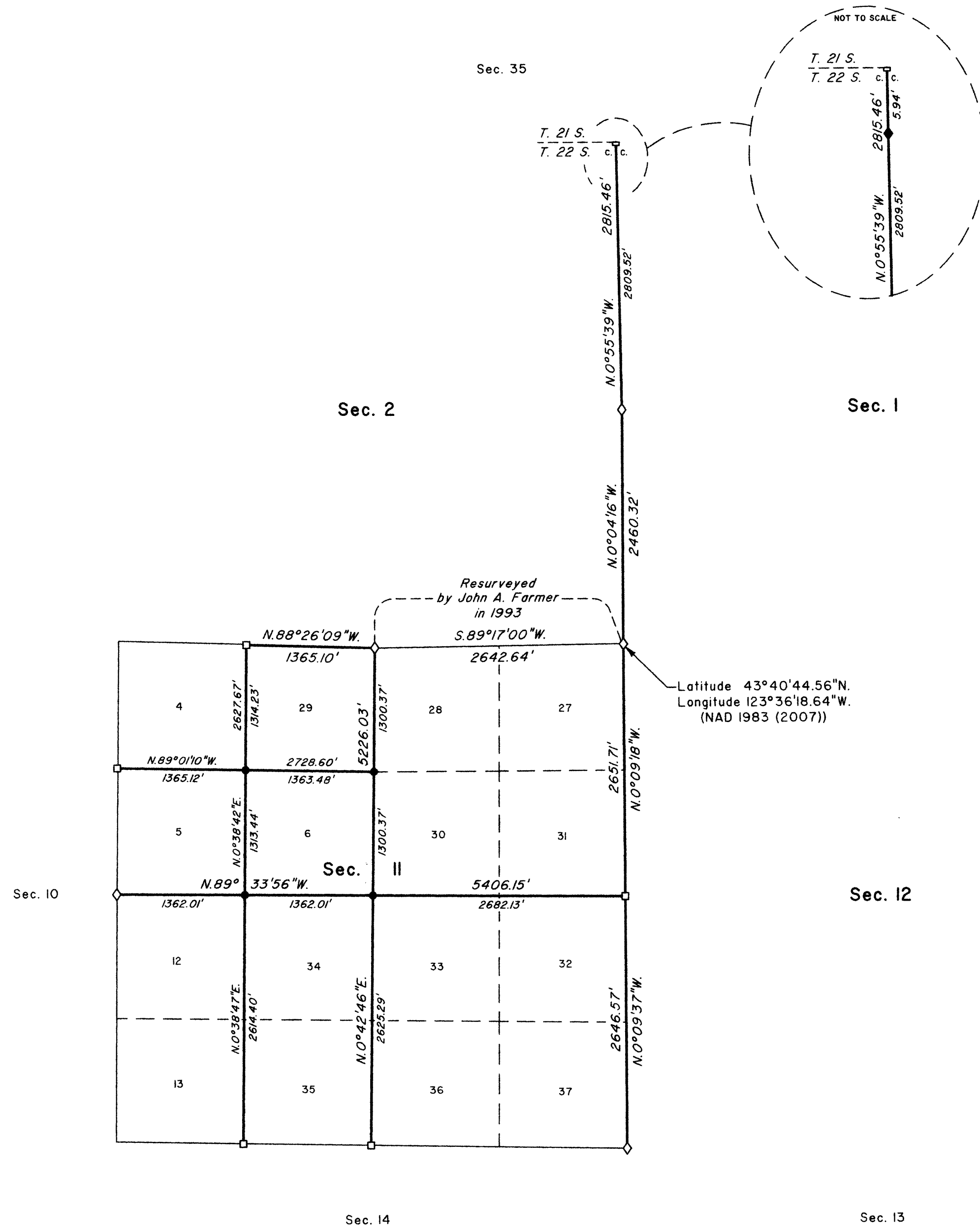
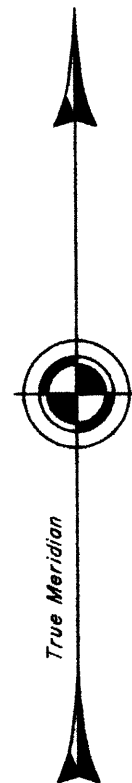
OFFICIALLY FILED: 1/12/2010

TOWNSHIP 22 SOUTH, RANGE 8 WEST, OF THE WILLAMETTE MERIDIAN, OREGON

SHEET 2 OF 2

DEPENDENT RESURVEY AND SURVEY

FILED
 Date: 2/1/2010 By: JC
 This survey consists of:
 Map: VOL 56
 Narrative: PAGES 21928 - 58
 Corner Rpt: _____
 DOUGLAS COUNTY
 SURVEYOR



LEGEND	
◇	Original corner previously remonumented
◆	Original corner remonumented this survey
□	Corner previously established or reestablished
●	Corner established or reestablished this survey

LEGAL SUBDIVISION	OFFICIAL ACRES
SECTION II	
LOT 27	40.17
LOT 28	39.78
LOT 29	40.94
LOT 30	40.08
LOT 31	40.47

UNITED STATES DEPARTMENT OF THE INTERIOR
 BUREAU OF LAND MANAGEMENT

Portland, Oregon

This plat is strictly conformable to the approved field notes, and the survey, having been correctly executed in accordance with the requirements of law and the regulations of this Bureau, is hereby accepted.

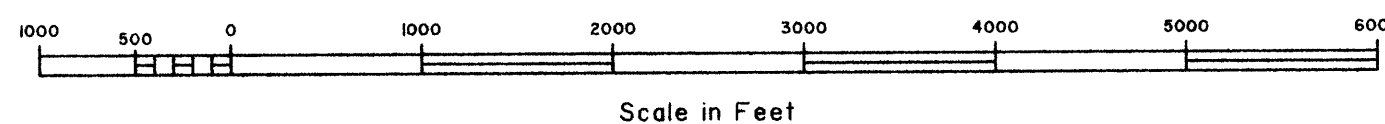
For the Director

Mary J. M. Hartzel

Chief Cadastral Surveyor of Oregon

October 16, 2009

Date



Scale in Feet

OFFICIALLY FILED: 1/12/2010