

TOWNSHIP 22 SOUTH, RANGE 9 WEST, OF THE WILLAMETTE MERIDIAN, OREGON

CORRECTIVE DEPENDENT SURVEY, DEPENDENT RESURVEY, AND SUBDIVISION OF SECTION 24

FILED
 Date: 4/30/2009 By: JC
 This survey consists of:
 Map: VOL. 55
 Narrative: PAGES
 Corner Rpt: 21721-40

DOUGLAS COUNTY
 SURVEYOR

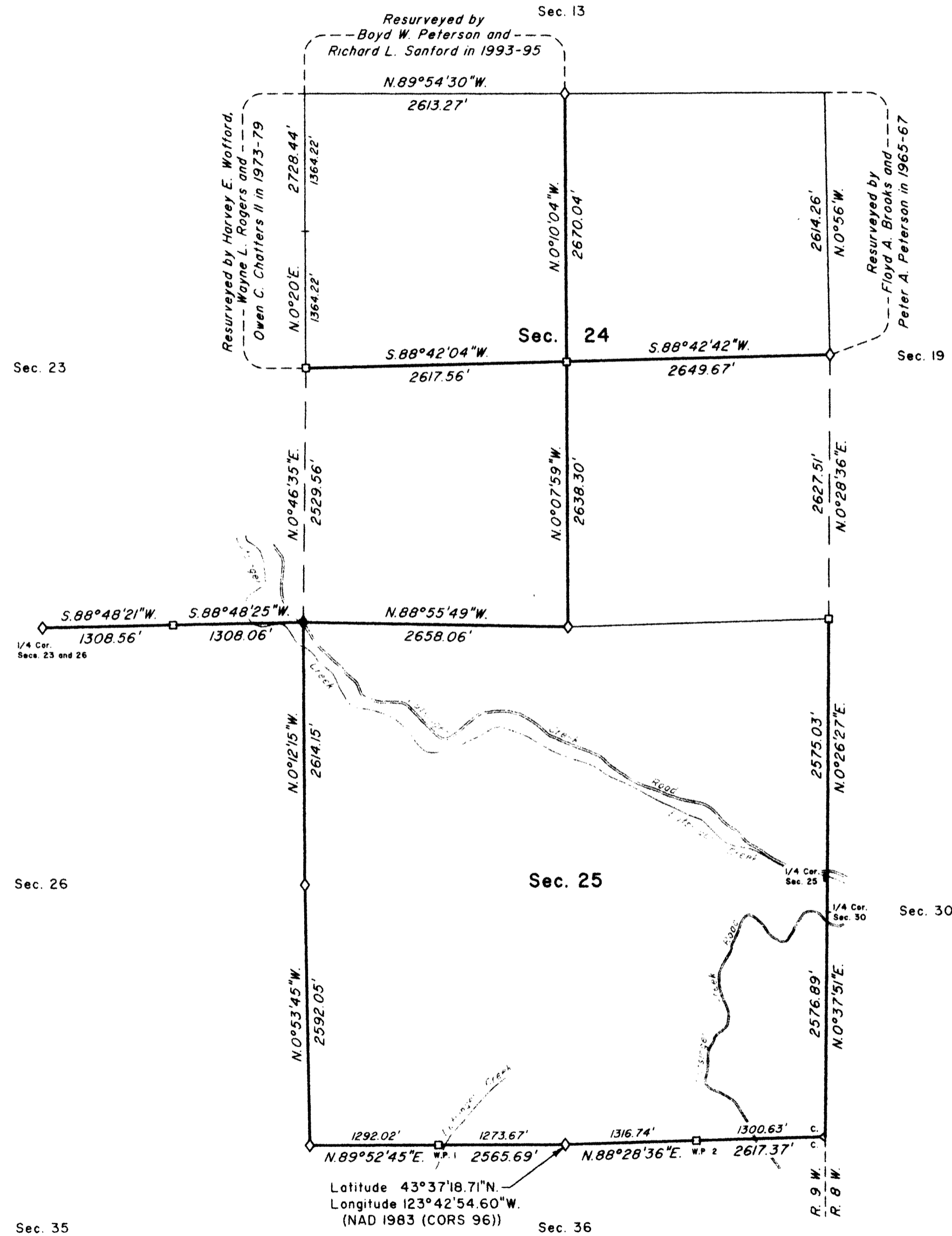
A history of surveys is contained in the field notes.

This plat represents a corrective dependent resurvey of a portion of the subdivisional lines and the dependent resurvey of a portion of the east boundary and subdivisional lines, T. 22 S., R. 9 W., Willamette Meridian, Oregon, designed to restore the corners in their true original locations according to the best available evidence, and the subdivision of section 24.

Measured distances and directions have been adjusted by computer software that incorporates a least squares adjustment routine. The adjusted bearings and distances are reported to the nearest second and 0.01 foot.

The lottings and areas are as shown on the plats approved August 2, 1875 and January 16, 1896.

The survey was executed by Edith M. Forkner, Cadastral Surveyor, beginning August 15, 2006, and completed October 26, 2006, pursuant to Special Instructions dated August 1, 2006, under Group Number 2149, Oregon.



LEGEND	
◇	Original corner previously remonumented
◆	Original corner remonumented this survey
□	Corner previously established or reestablished
■	Corner previously established or reestablished; remonumented this survey

UNITED STATES DEPARTMENT OF THE INTERIOR
 BUREAU OF LAND MANAGEMENT

Portland, Oregon

This plat is strictly conformable to the approved field notes, and the survey, having been correctly executed in accordance with the requirements of law and the regulations of this Bureau, is hereby accepted.

For the Director

May J. M. Hartzel

Chief Cadastral Surveyor of Oregon

April 16, 2009

Date



Scale in Feet