

TOWNSHIP 22 SOUTH, RANGE 9 WEST, OF THE WILLAMETTE MERIDIAN, OREGON

DEPENDENT RESURVEY AND SUBDIVISION OF SECTIONS 3, 4, 9 AND 10

FILED

Date 1-14-1999 By: JP

This survey consists of:

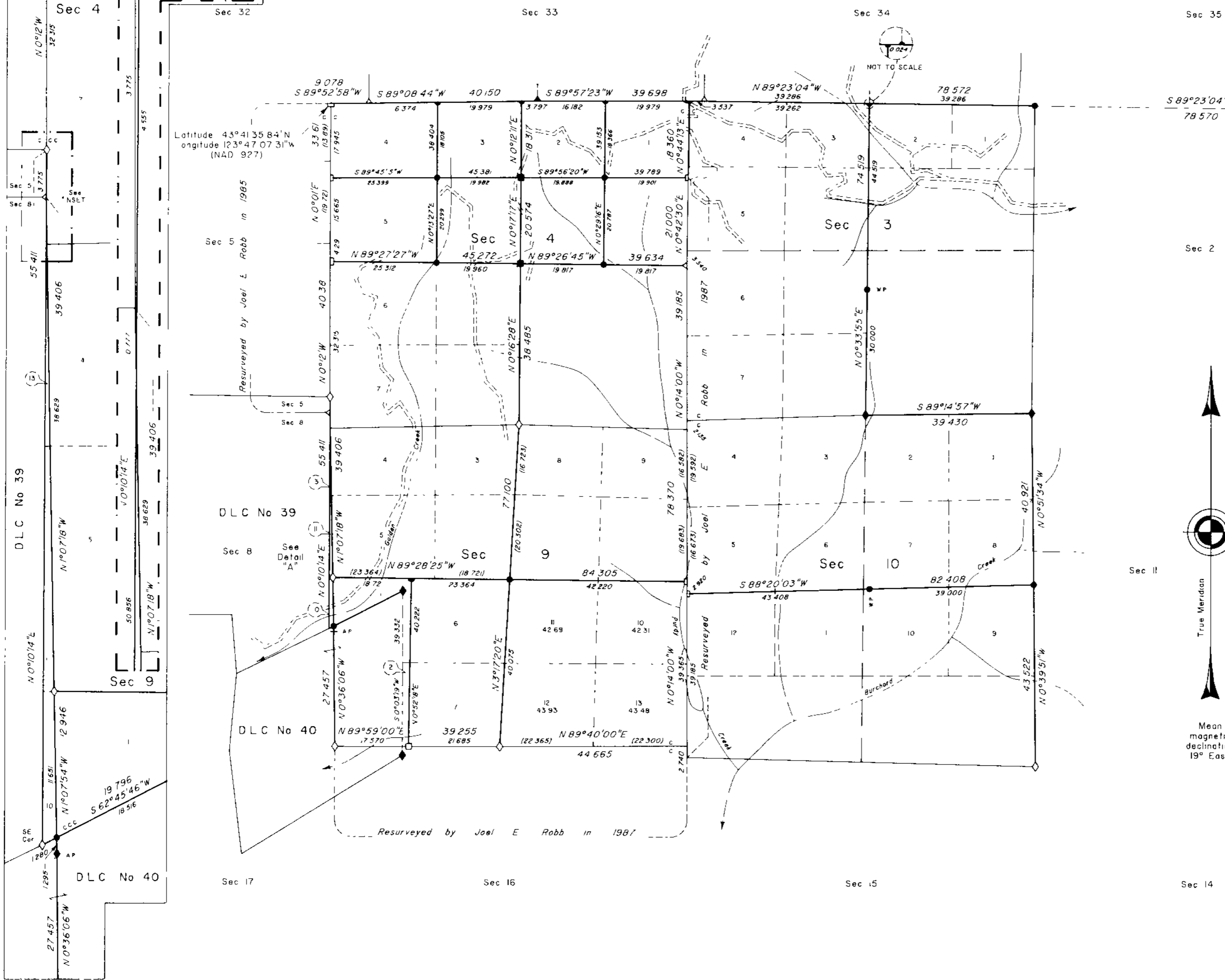
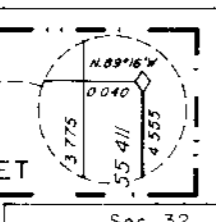
Map: _____

Narrative: Vol 52 Pgs

Corner Pkt 19852-19884

**DOUGLAS COUNTY
SURVEYOR**

DETAIL "A"
NOT TO SCALE



A history of surveys is contained in the field notes

This plat represents a dependent resurvey of a portion of the south boundary, T 21 S, R 9 W, a portion of the subdivisional lines, and certain Donation Land Claim boundaries, T 22 S, R 9 W, Willamette Meridian, Oregon, designed to restore the corners in their true original locations according to the best available evidence, and the subdivision of sections 3, 4, 9 and 10

Measured distances and directions have been adjusted by Cadastral Measurement Management (CMM), a computer program that incorporates a least squares adjustment routine. The adjusted bearings and distances are reported to the nearest second and 0.001 chain

Except as shown hereon, the lottings and areas are as shown on the plats approved February 20, 1856, September 25, 1862, August 2, 1875, January 16, 1896 and March 25, 1897

The survey was executed by Boyd W Peterson and John A Farmer, Cadastral Surveyors, beginning October 23, 1995, and completed February 3, 1998, pursuant to Special Instructions dated September 19, 1995, under Group Number 1791, Oregon

Timber in this area consists of fir, hemlock, alder, maple, cedar, and dogwood

LEGEND	
	Original corner previously remonumented
	Original corner remonumented this survey
	Corner previously established or reestablished
	Corner previously established or reestablished remonumented this survey
	Corner established or reestablished this survey

UNITED STATES DEPARTMENT OF THE INTERIOR
BUREAU OF LAND MANAGEMENT

Portland, Oregon July 31, 1998

This plat is strictly conformable to the approved field notes, and the survey, having been correctly executed in accordance with the requirements of law and the regulations of this Bureau, is hereby accepted

For the Director

Mare L. Thomas
acting Chief Cadastral Surveyor of Oregon

