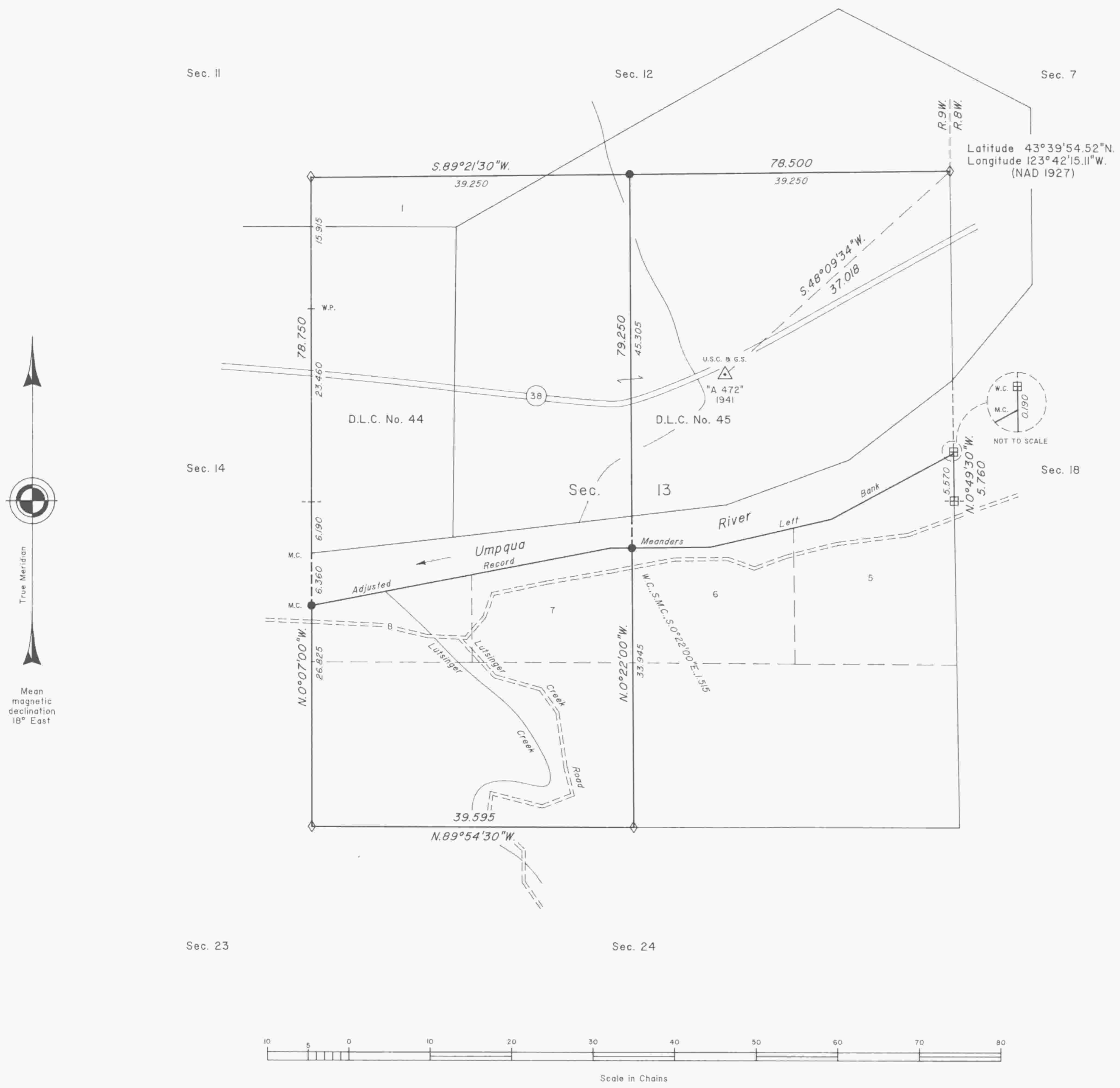


# TOWNSHIP 22 SOUTH, RANGE 9 WEST, OF THE WILLAMETTE MERIDIAN, OREGON

## DEPENDENT RESURVEY AND SUBDIVISION OF SECTION 13



A history of surveys is contained in the field notes.

This plat represents a dependent resurvey of a portion of the east boundary and subdivisional lines, and the adjusted record meanders of the left bank of the Umpqua River in section 13, T. 22 S., R. 9 W., Willamette Meridian, Oregon, designed to restore the corners in their true original locations according to the best available evidence, and the subdivision of section 13.

The lottings and areas are as shown on the plats approved August 2, 1875 and April 22, 1899.

The survey was executed by Boyd W. Peterson, Cadastral Surveyor, and Richard L. Sanford, Surveying Technician, beginning July 13, 1993, and completed June 20, 1995, pursuant to Special Instructions dated June 23, 1993, under Group Number 1704, Oregon.

Timber in this area consists of fir, hemlock, cedar, alder, maple, madrone, oak, ash and willow.

The tie to the geodetic control station is reported as mean bearing and sea level distance.

**LEGEND**

- ◊ Original corner previously remonumented
- Corner previously established or reestablished
- Corner established or reestablished this survey

UNITED STATES DEPARTMENT OF THE INTERIOR  
BUREAU OF LAND MANAGEMENT

Portland, Oregon April 22, 1997

This plat is strictly conformable to the approved field notes, and the survey, having been correctly executed in accordance with the requirements of law and the regulations of this Bureau, is hereby accepted.

For the Director  
*Wayne M. Gardner*  
Chief Cadastral Surveyor of Oregon