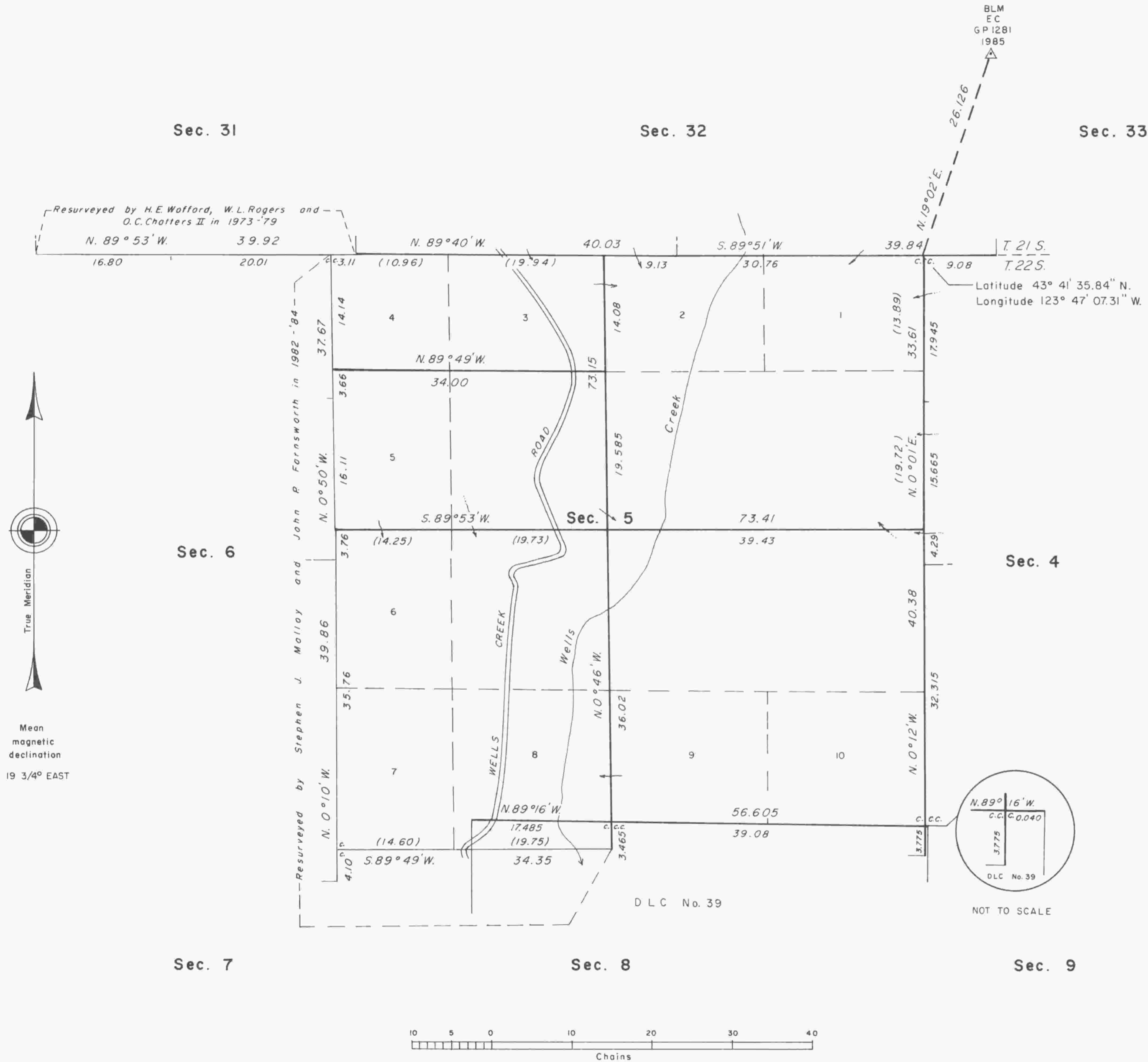


TOWNSHIP 22 SOUTH, RANGE 9 WEST, OF THE WILLAMETTE MERIDIAN, OREGON

DEPENDENT RESURVEY AND SUBDIVISION OF SECTION 5



The history of surveys is contained in the field notes.

This plat represents a dependent resurvey of a portion of the south boundary, T. 21 S., R. 9 W., and a portion of the subdivisional lines and claim lines, T. 22 S., R. 9 W., Willamette Meridian, Oregon, designed to restore the corners in their true original locations according to the best available evidence, and the subdivision of section 5.

The lottings and areas are as shown on the plats approved January 16, 1896 and March 25, 1897.

The survey was executed by Joel E. Robb, Cadastral Surveyor, beginning August 13, 1985, and completed October 1, 1985, pursuant to Special Instructions dated July 2, 1985, under Group Number 1281, Oregon.

Timber in this area consists of fir, hemlock, cedar, alder, maple, chinkapin, and madrone.

UNITED STATES DEPARTMENT OF THE INTERIOR
BUREAU OF LAND MANAGEMENT
Portland, Oregon March 25, 1988

This plat is strictly conformable to the approved field notes, and the survey, having been correctly executed in accordance with the requirements of law and the regulations of this Bureau, is hereby accepted.

For the Director

Daniel L. Berry

Acting Chief Cadastral Surveyor of Oregon