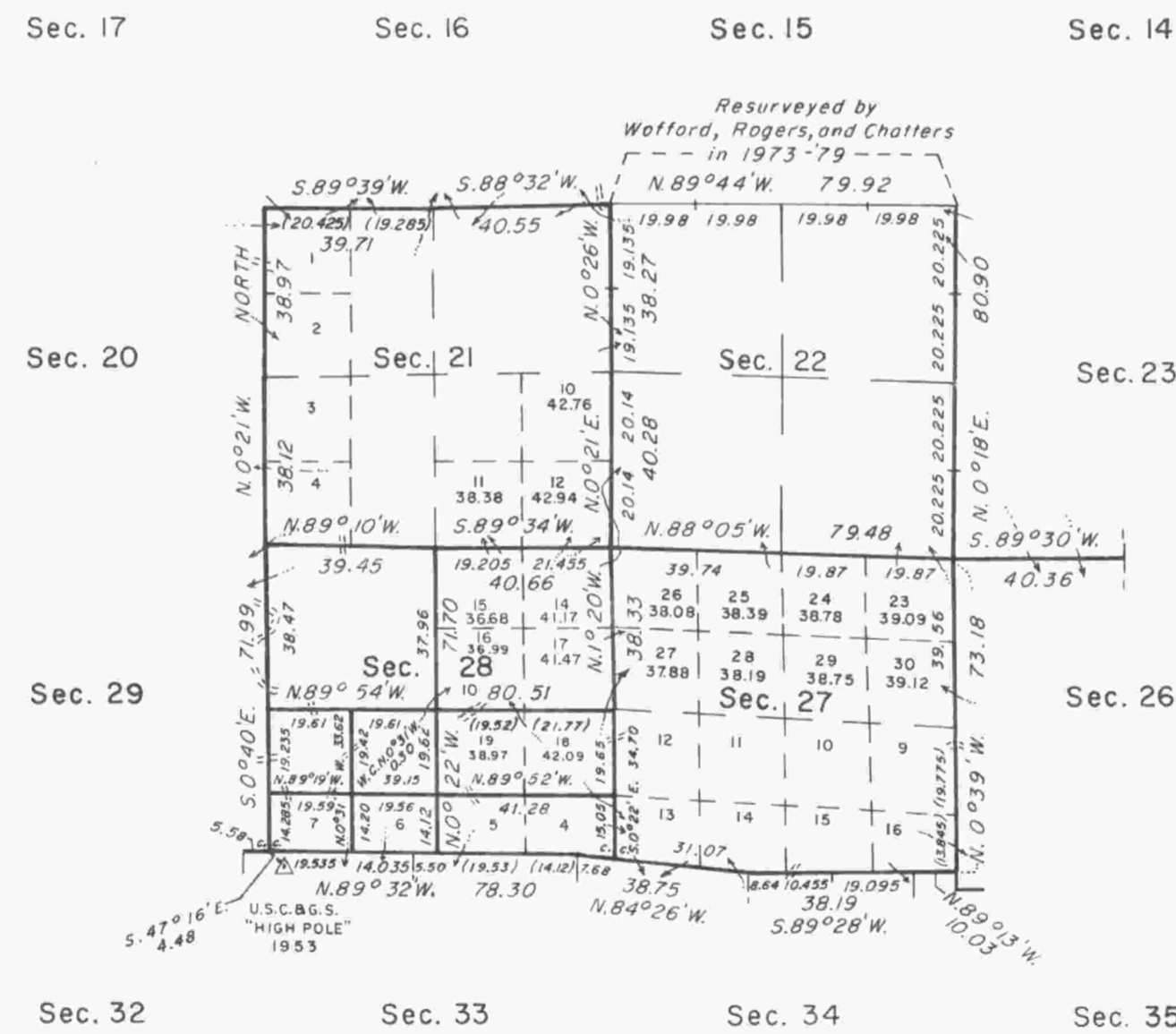
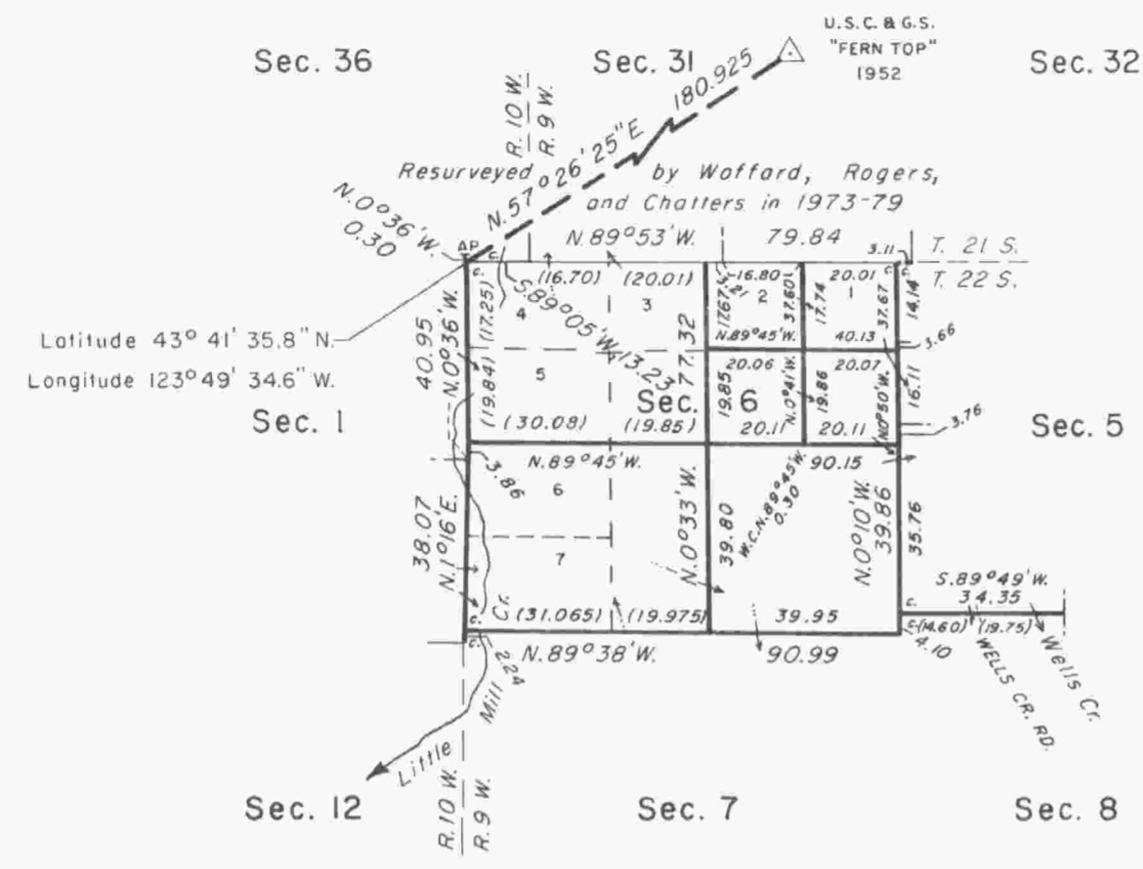


TOWNSHIP 22 SOUTH, RANGE 9 WEST OF THE WILLAMETTE MERIDIAN, OREGON

CORRECTIVE DEPENDENT RESURVEY, DEPENDENT RESURVEY, AND SUBDIVISION OF SECTIONS



The history of surveys is contained in the field notes.

This plat represents a corrective dependent resurvey of a portion of the subdivisional lines, and the dependent resurvey of a portion of the west boundary and subdivisional lines, T. 22 S., R. 9 W., Willamette Meridian, Oregon, designed to restore the corners in their true original locations according to the best available evidence, and the subdivision of sections 6 and 28.

Except as shown hereon, the lottings and areas are as shown on the plats approved August 2, 1875, and January 16, 1896.

The survey was executed by Stephen J. Malloy and John P. Farnsworth, Cadastral Surveyors, beginning November 3, 1982, and completed December 20, 1984, pursuant to Special Instructions dated October 28, 1982, Supplemental Special Instructions dated February 28, 1983, Second Supplemental Special Instructions dated April 26, 1983, and Third Supplemental Special Instructions dated August 3, 1983, under Group Number 1125, Oregon, Special Instructions dated August 7, 1984, and Supplemental Special Instructions dated September 13, 1984, under Group Number 1226, Oregon.

Timber in this area consists of fir, cedar, maple, and alder.

UNITED STATES DEPARTMENT OF THE INTERIOR
BUREAU OF LAND MANAGEMENT
Portland, Oregon June 27, 1986

This plat is strictly conformable to the approved field notes, and the survey, having been correctly executed in accordance with the requirements of law and the regulations of this Bureau, is hereby accepted.

For the Director

William W. Glenn
Chief Cadastral Surveyor of Oregon

