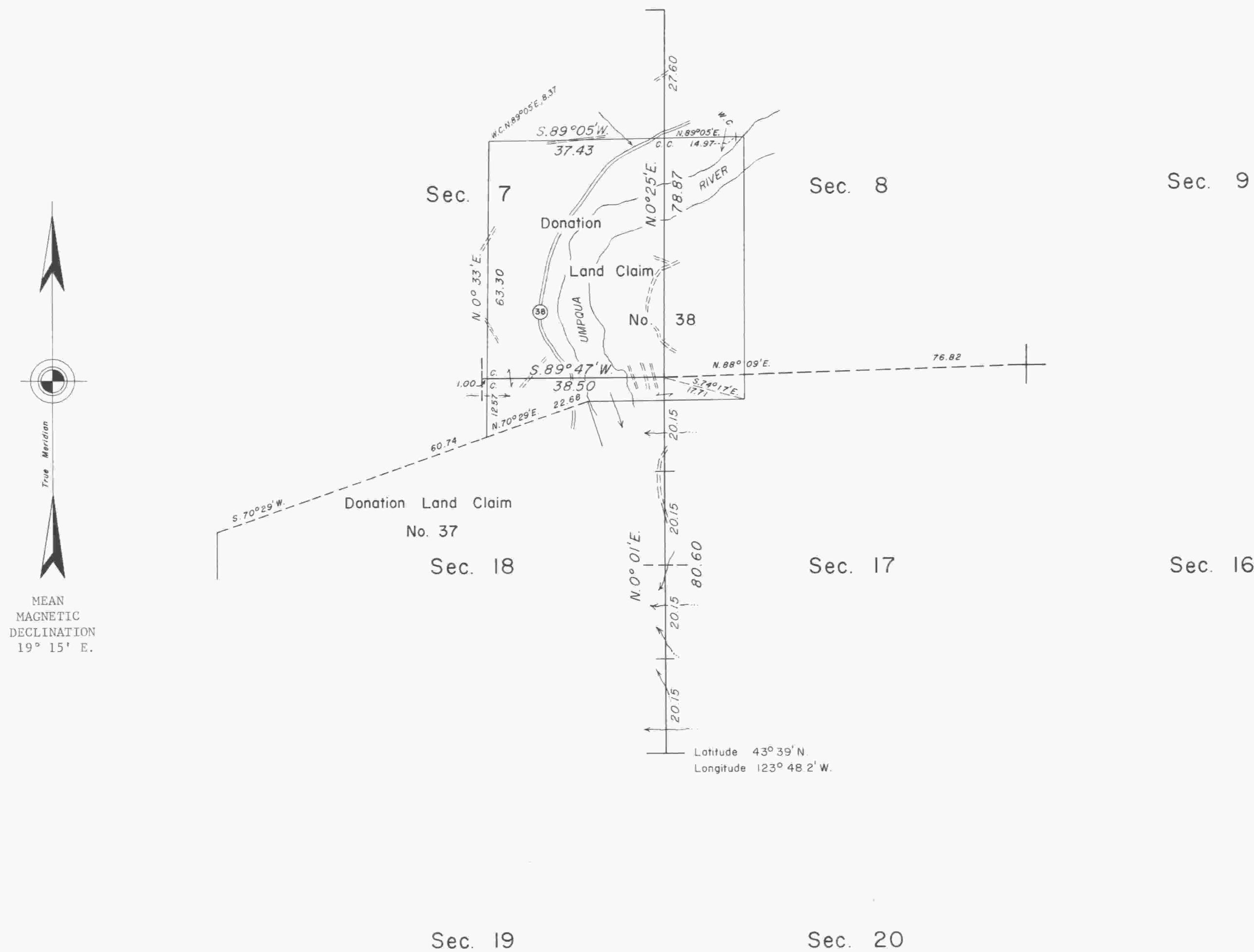


TOWNSHIP 22 SOUTH, RANGE 9 WEST, OF THE WILLAMETTE MERIDIAN, OREGON.
DEPENDENT RESURVEY

Sec. 6



A portion of the subdivisional lines was surveyed by Harvey Gordon and Charles T. Gardiner in 1855. Donation Land Claims in the area were surveyed by Dennis Hathorn in 1856, prior to many of the subdivisional lines being extended into this portion of the township. William H. Byars surveyed a portion of the subdivisional lines in 1874. A portion of the subdivisional lines was surveyed or resurveyed by Alonzo Gesner and E. O. Worrick in 1894. The Donation Land Claims were resurveyed and intersections made with section lines by George S. Pershin in 1896.

This plat represents a retracement and reestablishment of a portion of the subdivisional lines and a portion of the Donation Land Claim lines, T. 22 S., R. 9 W., Willamette Meridian, Oregon, designed to restore the corners in their true original location according to the best available evidence.

The lottings and areas are as shown on the plats approved February 20, 1856, September 25, 1862, August 2, 1875, November 21, 1881, January 16, 1896 and March 25, 1897.

The resurvey was executed by James E. Jelley, Cadastral Surveyor, from May 18, 1970 to September 17, 1970, under Special Instructions dated May 7, 1970, which provide for the surveys included under Group No. 709.

UNITED STATES DEPARTMENT OF THE INTERIOR
BUREAU OF LAND MANAGEMENT
Washington, D.C. August 14, 1975

This plat is strictly conformable to the approved field notes, and the survey, having been correctly executed in accordance with the requirements of law and the regulations of this Bureau, is hereby accepted.

For the Director

J. D. Voorhees
Acting Chief, Division of Cadastral Survey

Timber in this area consists of fir, hemlock, cedar, alder, maple, chinquapin and madrone.

Ja/wo
SWZ