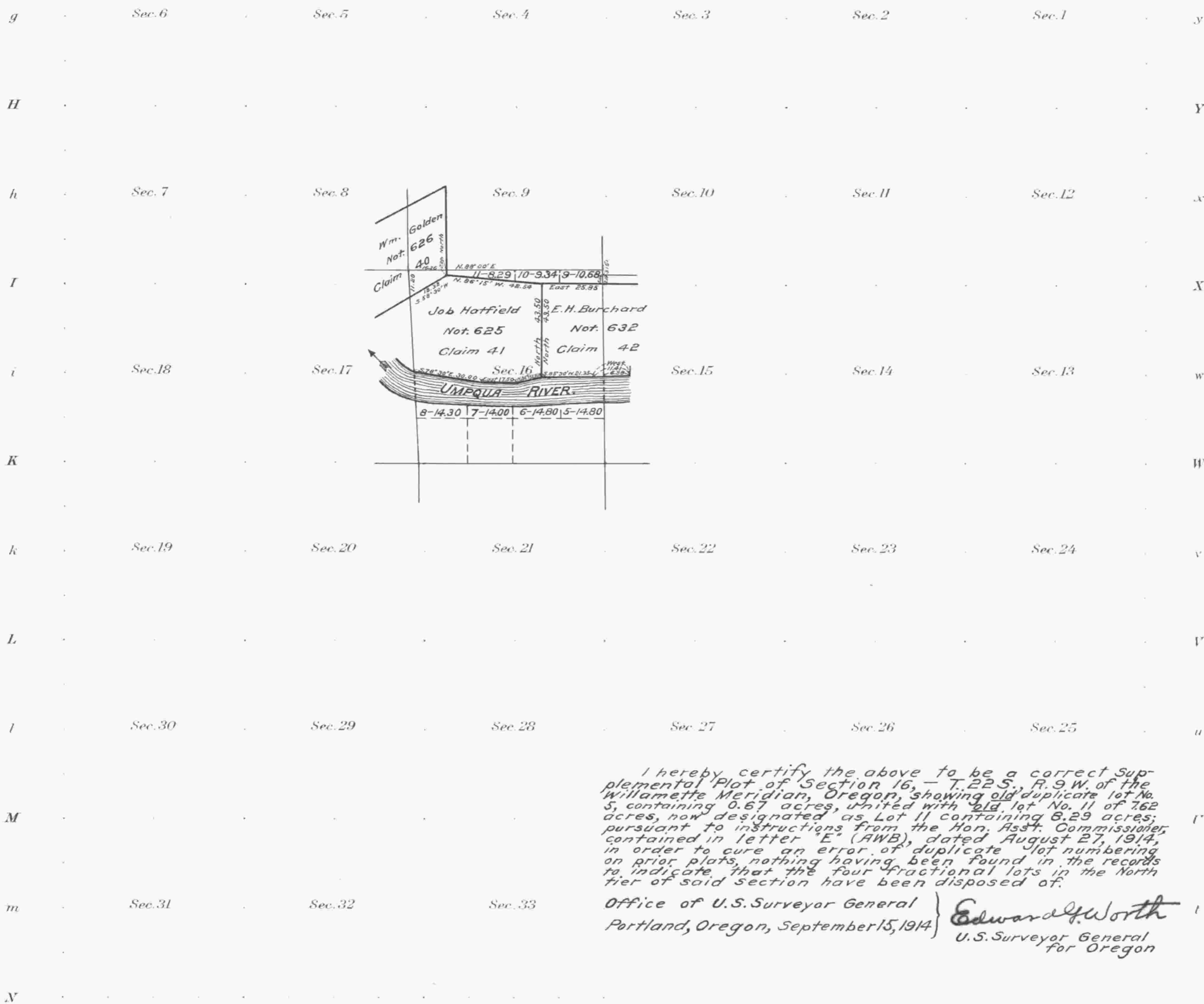


SUPPLEMENTAL PLAT
of
SECTION 16, — T. 22 S. R. 9 W. OF THE WILLAMETTE MERIDIAN, OREGON.
(Superseding Plats of said Township approved Sept. 25, 1862; Apr. 10, 1891 and March 25, 1897.)



I hereby certify the above to be a correct Supplemental Plat of Section 16, — T. 22 S., R. 9 W. of the Willamette Meridian, Oregon, showing old duplicate lot No. 5, containing 0.67 acres, united with old lot No. 11 of 762 acres, now designated as Lot 11 containing 8.29 acres; pursuant to instructions from the Hon. Asst. Commissioner contained in letter 'E' (AWB), dated August 27, 1914, in order to cure an error of duplicate lot numbering on prior plats, nothing having been found in the records to indicate that the four fractional lots in the North tier of said section have been disposed of.

Office of U.S. Surveyor General } *Edward G. Worth*
Portland, Oregon, September 15, 1914 } U.S. Surveyor General
for Oregon

Areas in Acres	
Public Land	
Indian Reservation	
Indian Allotments	
Mineral Claims	
Water Surface	
Total Area	

0 10 20 40 80

Scale 40 Chains to an inch
Mean Magnetic Declination

Surveys Designated	By Whom Surveyed	Group		Amount of Surveys			When Surveyed	
		No.	Date of instructions	Mls.	chs.	fks.	Began	Completed

The above map of Township No. _____ Range No. _____ of the Meridian _____ is strictly conformable to the field notes of the survey thereof on file in this office, which have been examined and approved
U. S. Surveyor General's Office. }
Surveyor General.

ACCEPTED BY THE HON. COMMISSIONER G. L. O. Sept. 28, 1914