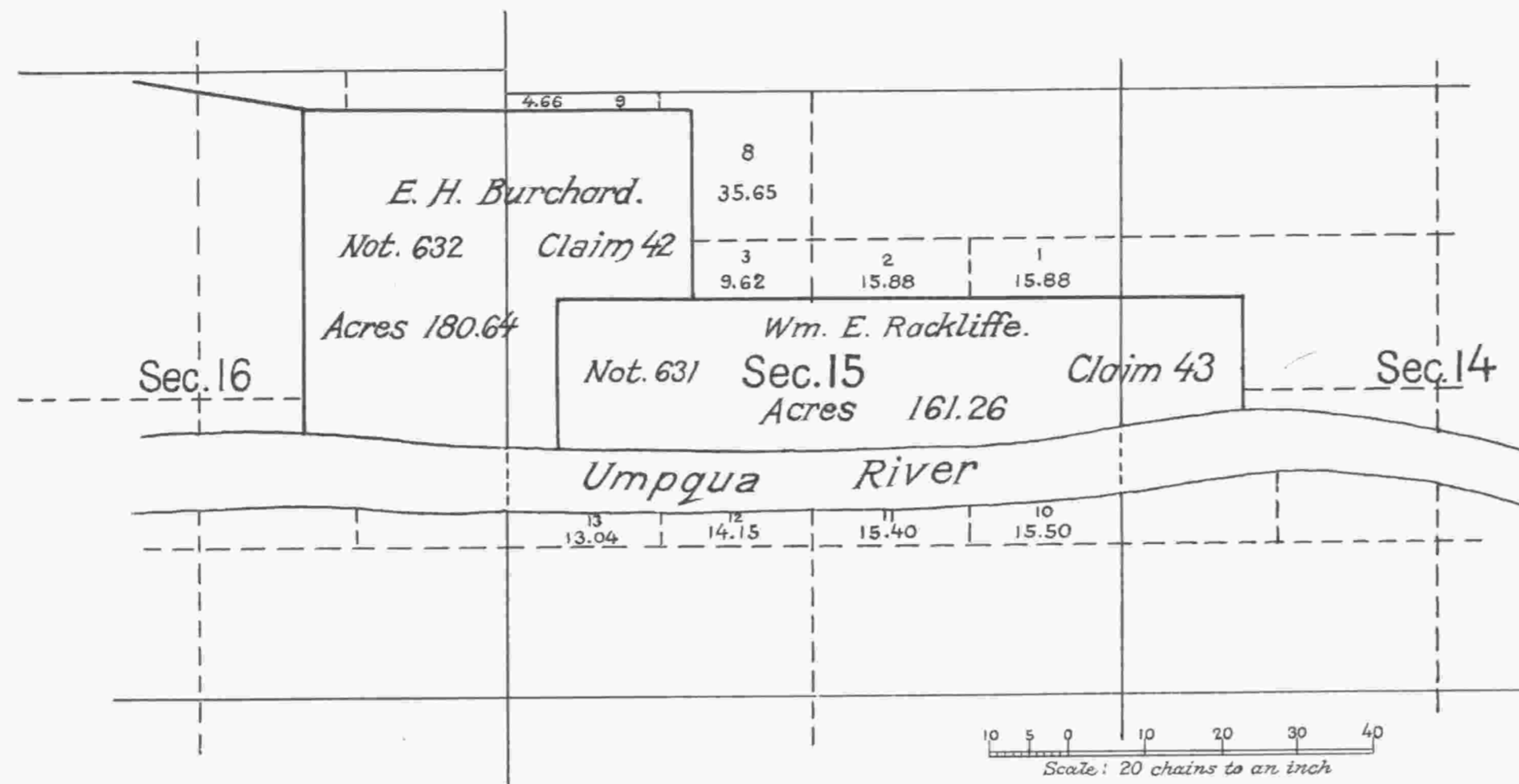


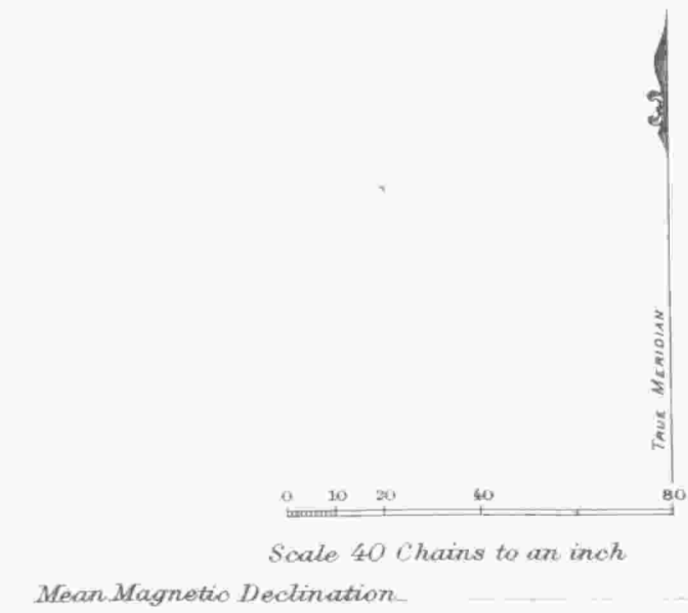
*PL*

Township N<sup>o</sup> 22 South Range N<sup>o</sup> 9 West of the Willamette Meridian, Oregon.



The above Plat of Section 15, T. 22 S. R. 9 W. Will. Mer. Or. showing the change in the numbering of Lots by authority of Commissioners Letter E dated August 17, 1899 is correct and is hereby approved.  
 Surveyor General's Office  
 Portland, Oregon August 23, 1899. *Robert A. Taber*  
 Sur: Gen'l for Oregon.

I certify the above to be a correct copy of the original tracing on file in this Office.  
 U.S. Surveyor General's Office.  
 Portland, Oregon December 17, 1921.  
*Wesley W. Cairness*  
 Surveyor General of Oregon.



Surveys Designated	By Whom Surveyed	Group		Amount of Surveys			When Surveyed	
		No.	Date	Mls.	chs.	lks.	Begun	Completed

The above map of Township No. \_\_\_\_\_ Range No. \_\_\_\_\_ of the \_\_\_\_\_ Meridian \_\_\_\_\_ is strictly conformable to the field notes of the survey thereof on file in this office, which have been examined and approved.  
 U. S. Surveyor General's Office.  
 \_\_\_\_\_  
 Surveyor General.