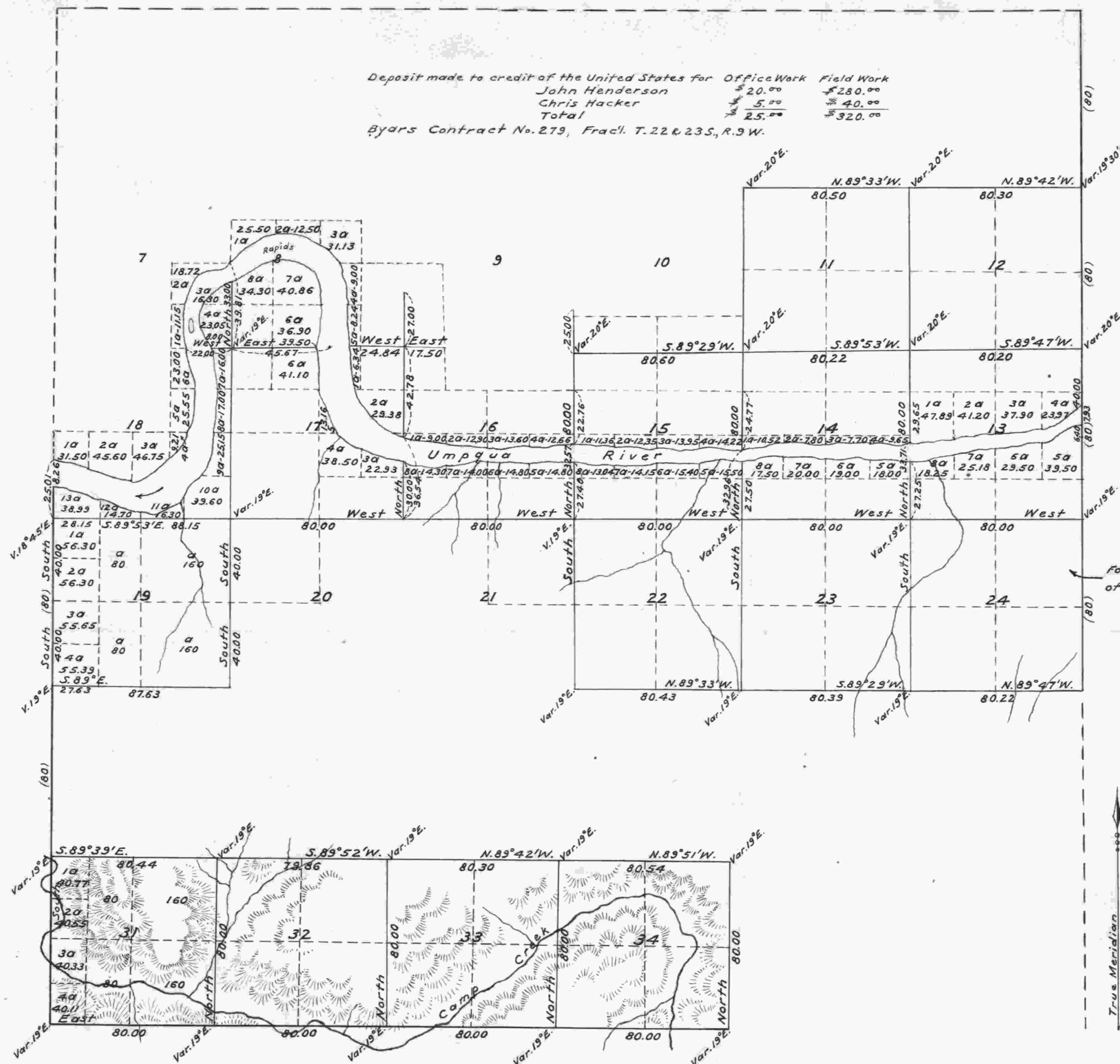


Township No. 22 South, Range No. 9 West, Willamette Meridian, Oregon.

Deposit made to credit of the United States for Office Work Field Work  
 John Henderson \$20.00 \$280.00  
 Chris Hacker \$5.00 \$40.00  
 Total \$25.00 \$320.00  
 Byars Contract No. 279, Frac'l. T. 22 & 23 S., R. 9 W.



Area	
Sections	Acres
31	641.87
32	640.00
33	640.00
34	640.00
Total	2561.87

Lines	Contractor	Contract		Amount Surveyed			Commenced	Completed
		No.	Date	Miles	Chains	Links		
Subdivisions	W. H. Byars	279	Mar. 5 <sup>th</sup> , 1878	8	1	10	Mar. 24 <sup>th</sup> , 1878	Mar. 27 <sup>th</sup> , 1878
Exteriors	" " "	"	" " "					

The above Map of the subdivisional lines of Township 22 South, Range No. 9 West, Willamette Meridian, Oregon, is strictly conformable to the original field notes thereof on file in this Office and which have been examined and approved.  
 U.S. Surveyor General's Office,  
 Portland, Oregon,  
 July 31, 1878.

(signed) James C. Tolman.  
 Surveyor General of Oregon.

Public Survey Office,  
 Portland, Oregon,  
 September 9, 1935.

I certify this to be a correct copy of the original plat on file in this office.

Joseph A. Gamm  
 Office Cadastral Engineer.