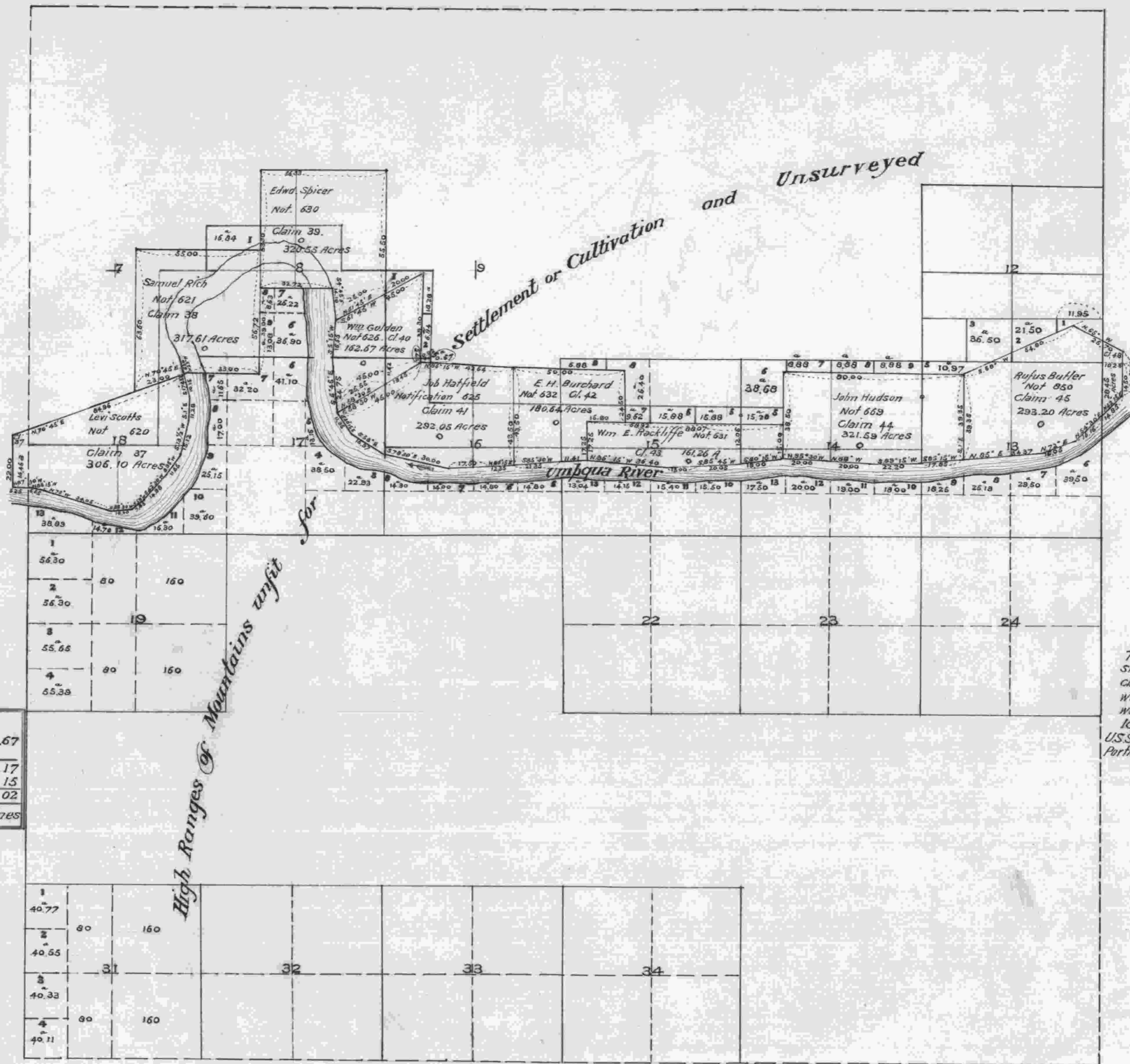


Township No 22 South Range No 9 West Willamette Meridian



Legal Sub Donation Cts	
Surveyed	2355.67
Pub Land remaining	
Total on Cl Map	2531.17
Tp plat	1660.15
Diff in computation	871.02
Cl lines run outside of subdn lines	

The surveys made in this Township since the original map of survey of claims was prepared and approved with resulting areas and lot numbers were added to this plat on April 10, 1891.
 signed
 U.S. Surveyor General's Office, W. Henry Byrnes,
 Portland, Oregon, April 10, 1891. Sur. Gen. of Oregon

I certify this to be a correct copy of the original Plat on file in this Office
 Surveyor General's Office
 Portland, Oregon, Jan. 20, 1915

Edmund Worth
 Surveyor General.

The above Map of the survey of claims in Township No 22 South Range No 9 West Willamette Meridian Oregon, is strictly conformable to the field notes of the surveys thereof on file in this Office, which have been examined and approved.
 Surveyor General's Office,
 Eugene City Sept. 25th 1862.

signed *B. P. Ingraham*
 Sur. Gen. of Ogn.