

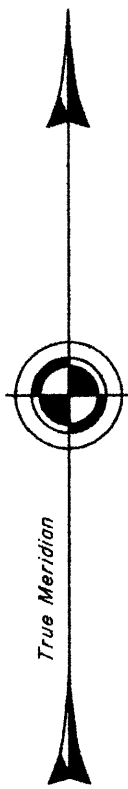
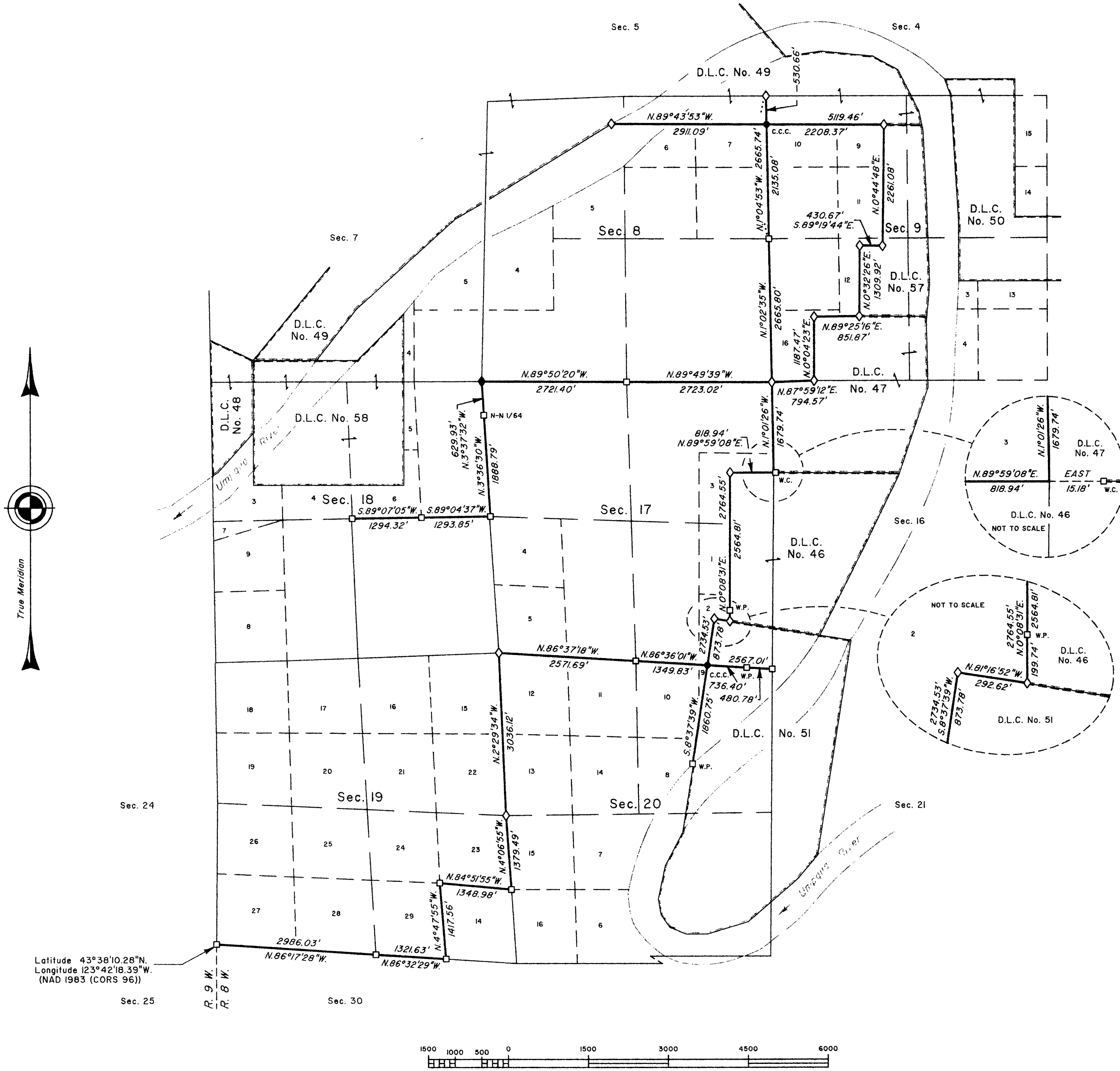
TOWNSHIP 22 SOUTH, RANGE 8 WEST, OF THE WILLAMETTE MERIDIAN, OREGON

DEPENDENT RESURVEY

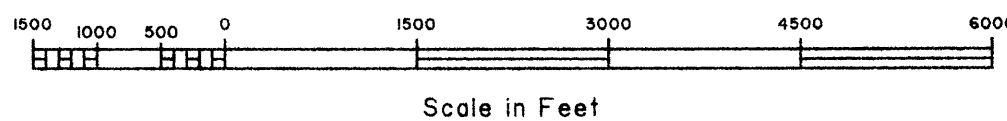
FILED

Date: 10/29/2010 By: JC
This survey consists of:
Map: BLM LINE NOTES
Narrative: VOL. 56
Corner Rpt: PGS 22214-22240

DOUGLAS COUNTY
SURVEYOR



Latitude 43°38'10.28\"N.
Longitude 123°42'18.39\"W.
(NAD 1983 (CORS 96))



A history of surveys is contained in the field notes.

This plat represents a dependent resurvey of a portion of the subdivisional lines, portions of certain claim lines, and portions of the subdivision of section lines of sections 18 and 19, T. 22 S., R. 8 W., Willamette Meridian, Oregon, designed to restore the corners in their true original locations according to the best available evidence.

Measured distances and directions have been adjusted by computer software that incorporates a least squares adjustment routine. The adjusted bearings and distances are reported to the nearest second and 0.01 foot.

The lottings and areas are as shown on the plats approved February 20, 1856, December 23, 1859, and August 11, 1881, and the plats accepted August 15, 1933, March 24, 1966, and July 25, 1969.

The survey was executed by Edith M. Forkner, Cadastral Surveyor, beginning May 24, 2007, and completed October 16, 2007, pursuant to Special Instructions dated March 16, 2007, under Group Number 2300, Oregon, Administrative File Number 0704, and Special Instructions dated July 3, 2007, under Group Number 2180, Oregon.

Timber in this area consists of fir, hemlock, cedar, alder, myrtle, maple, oak, chinquapin, and chittum.

LEGEND	
◇	Original corner previously remonumented
◆	Original corner remonumented this survey
□	Corner previously established or reestablished
●	Corner established this survey

UNITED STATES DEPARTMENT OF THE INTERIOR
BUREAU OF LAND MANAGEMENT

Portland, Oregon

This plat is strictly conformable to the approved field notes, and the survey, having been correctly executed in accordance with the requirements of law and the regulations of this Bureau, is hereby accepted.

For the Director

Maury M. Hartzel

Chief Cadastral Surveyor of Oregon

August 16, 2010

Date

OFFICIALLY FILED: 10/29/2010