

TOWNSHIP 22 SOUTH, RANGE 8 WEST, OF THE WILLAMETTE MERIDIAN, OREGON

DEPENDENT RESURVEY

FILED
 Date: 7/20/2010 By: JC
 This survey consists of:
 Map: BLM LINE NOTES
 Narrative: VOL. 56
 Corner Rpt: PGS 22108-22125
 DOUGLAS COUNTY
 SURVEYOR

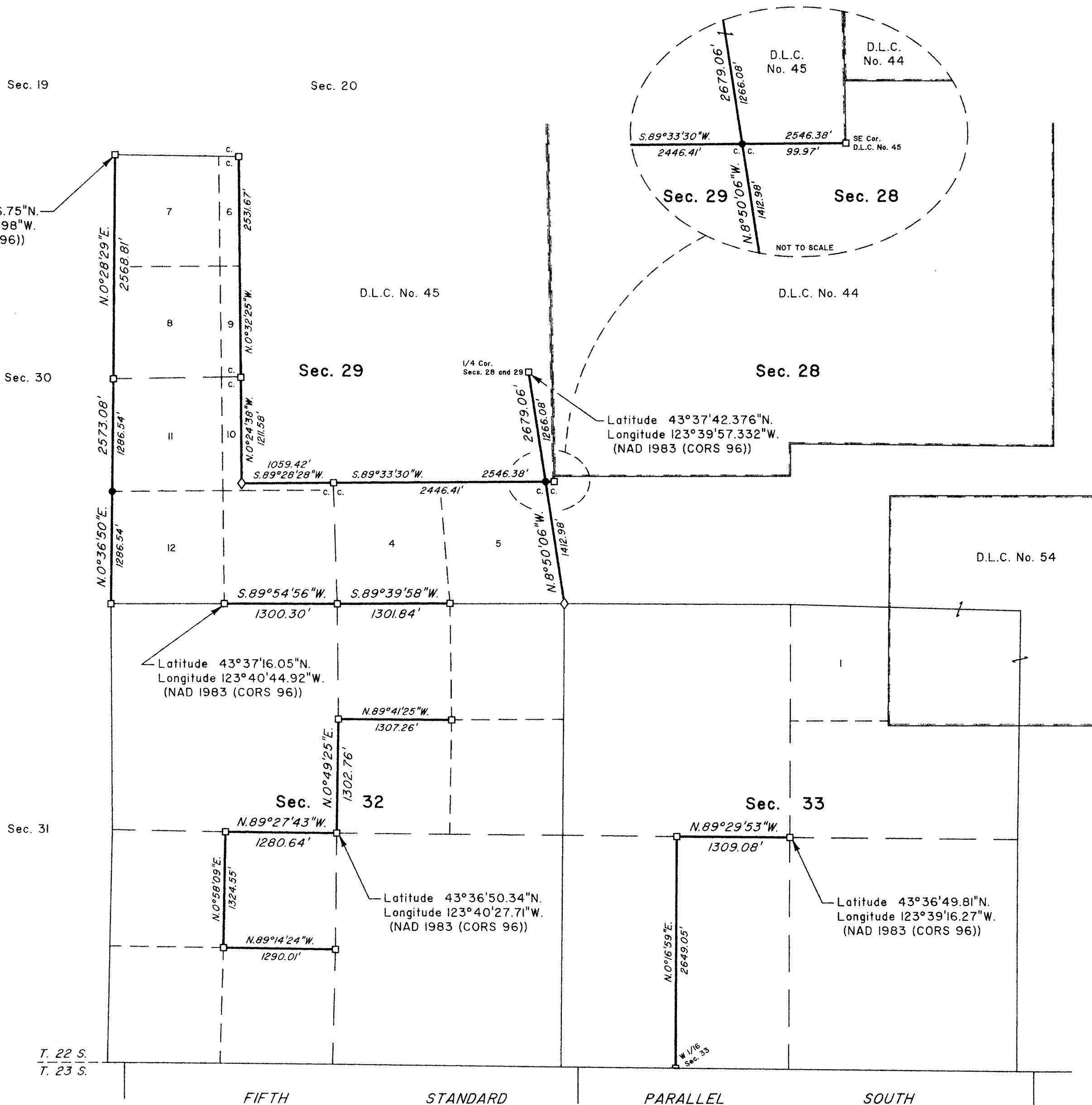
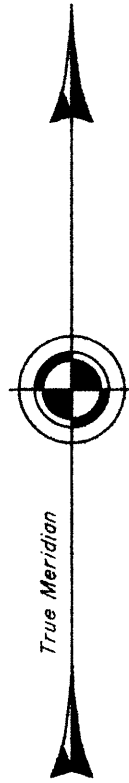
A history of surveys is contained in the field notes.

This plat represents a dependent resurvey of a portion of the subdivisional lines, the boundaries of Donation Land Claim No. 45, and the subdivision-of-section lines of sections 32 and 33, of T. 22 S., R. 8 W., Willamette Meridian, Oregon, designed to restore the corners in their true original locations according to the best available evidence.

Measured distances and directions have been adjusted by computer software that incorporates a least squares adjustment routine. The adjusted bearings and distances are reported to the nearest second and 0.01 foot.

The lottings and areas are as shown on the plat approved December 23, 1859, and the plats accepted March 24, 1966 and July 25, 1969.

The survey was executed by Aaron M. Graham, Cadastral Surveyor, and Michael O. Jones, Surveying Technician, beginning November 12, 2008, and completed April 29, 2009, pursuant to Special Instructions dated October 7, 2008, under Group Number 2241, Oregon.



LEGEND	
◊	Original corner previously remonumented
□	Corner previously established or reestablished
●	Corner established or reestablished this survey

UNITED STATES DEPARTMENT OF THE INTERIOR
 BUREAU OF LAND MANAGEMENT
 Portland, Oregon

This plat is strictly conformable to the approved field notes, and the survey, having been correctly executed in accordance with the requirements of law and the regulations of this Bureau, is hereby accepted.

For the Director
Mary J. M. Harts
 Chief Cadastral Surveyor of Oregon

May 4, 2010
 Date

