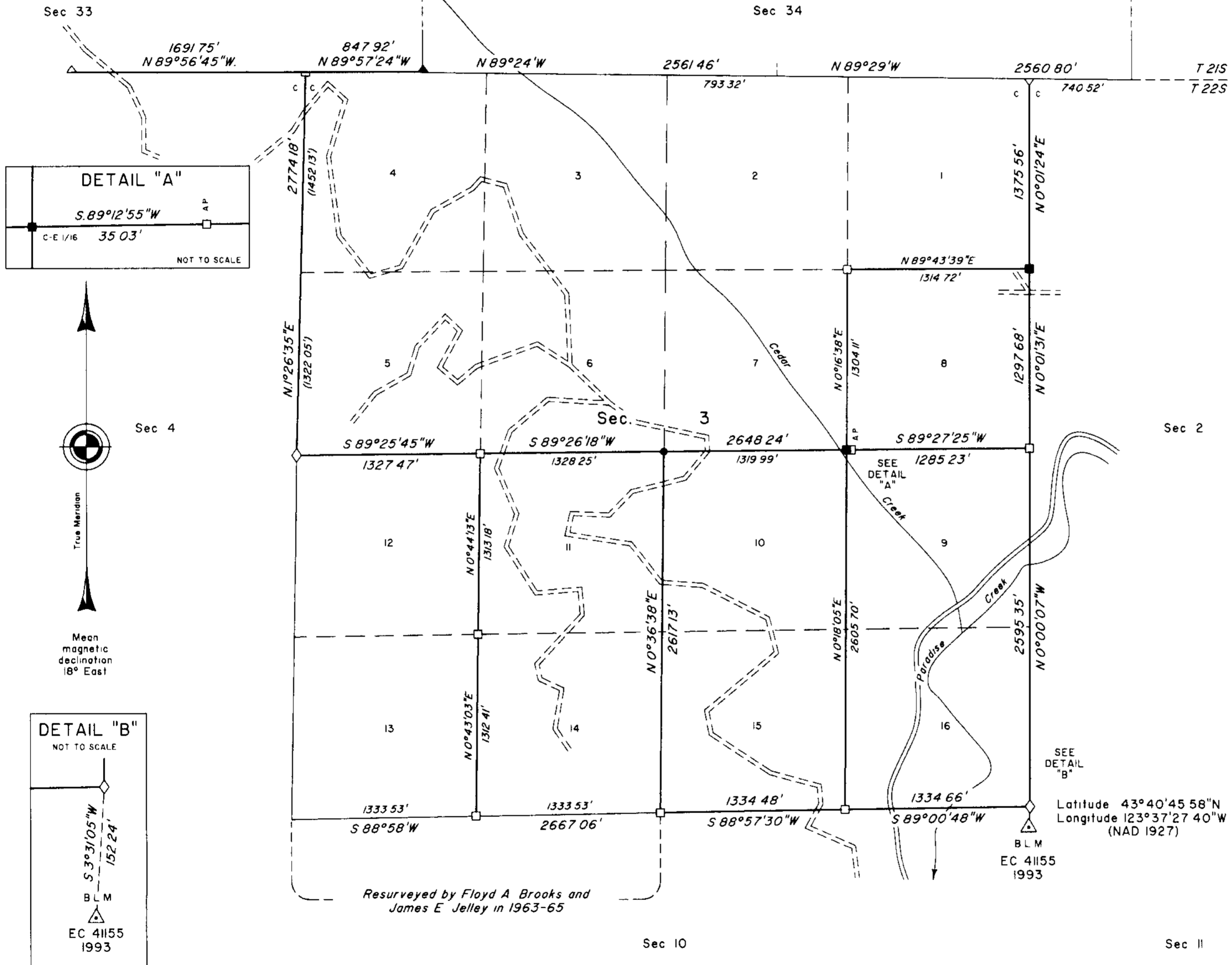


TOWNSHIP 22 SOUTH, RANGE 8 WEST, OF THE WILLAMETTE MERIDIAN, OREGON

DEPENDENT RESURVEY AND SUBDIVISION OF SECTION 3

*Resurveyed by Marvin J Lytle, Palmer Norseth, Thomas A Tillman,
Raymond M Bicknell, Joseph S Gawron and Hans W Thielsen in 1952-54*



A history of surveys is contained in the field notes

This plat represents a dependent resurvey of a portion of the south boundary, T 21 S, R 8 W, and a portion of the subdivisional lines, T 22 S, R 8 W, Willamette Meridian, Oregon, designed to restore the corners in their true original locations according to the best available evidence, and the subdivision of section 3

Measured distances and directions have been adjusted by Cadastral Measurement Management (CMM), computer software that incorporates a least squares adjustment routine. The adjusted bearings and distances are reported to the nearest second and 0.01 foot

The lottings and areas are as shown on the plat approved August 11, 1881

The survey was executed by Aaron M Graham, Cadastral Surveyor, beginning June 9, 1999, and completed July 14, 1999, pursuant to Special Instructions dated May 26, 1999, under Group Number 1910, Oregon

Timber in this area consists of fir, hemlock, cedar and alder

The tie to the geodetic control station is reported as mean bearing and sea level distance

LEGEND	
◊	Original corner previously remonumented
◆	Original corner remonumented this survey
□	Corner previously established or reestablished
■	Corner previously established or reestablished, remonumented this survey
●	Corner established this survey

UNITED STATES DEPARTMENT OF THE INTERIOR
BUREAU OF LAND MANAGEMENT

Portland, Oregon November 3, 2000

This plat is strictly conformable to the approved field notes, and the survey, having been correctly executed in accordance with the requirements of law and the regulations of this Bureau, is hereby accepted

For the Director

Wayne M. Gardner

Chief Cadastral Surveyor of Oregon