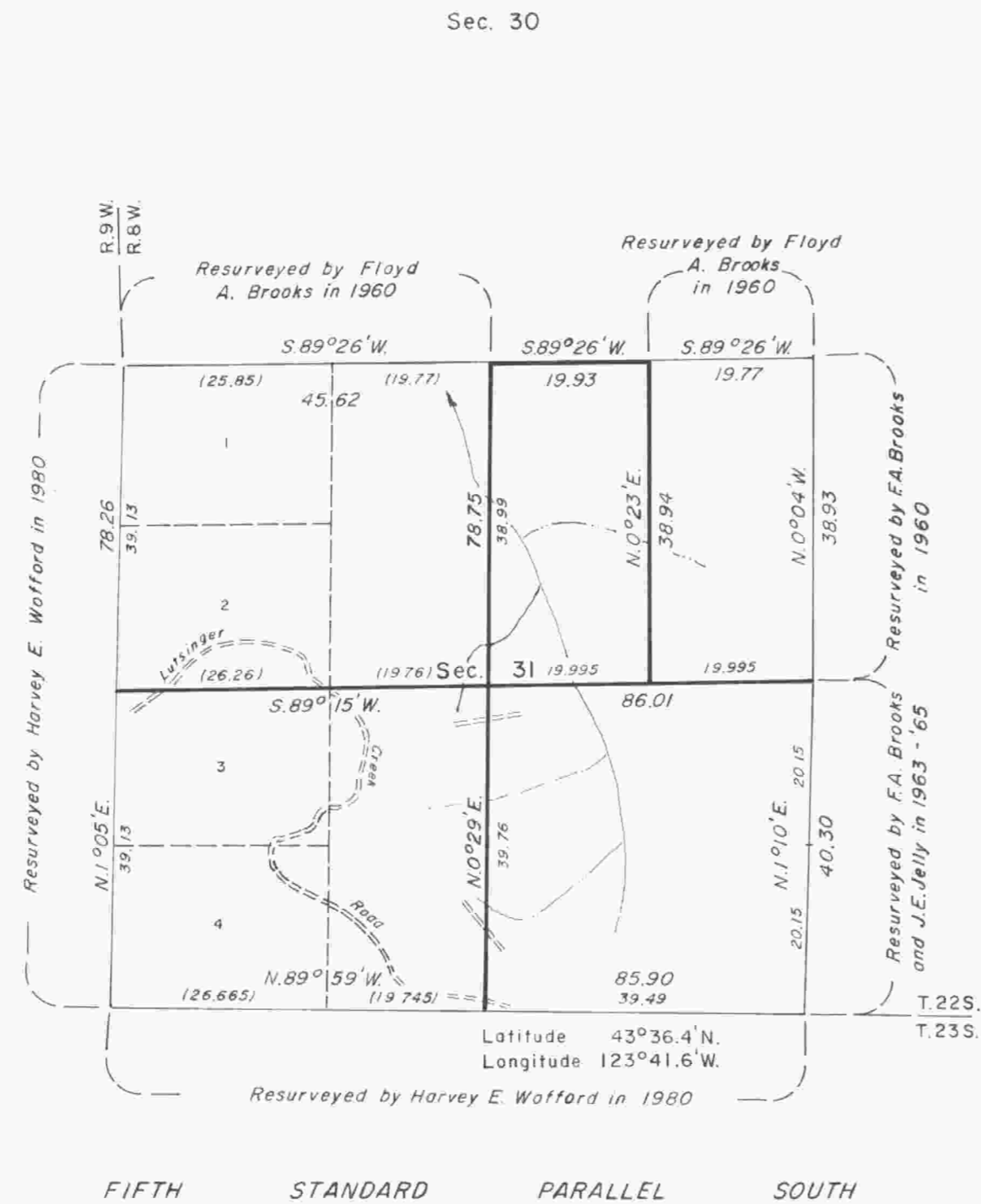
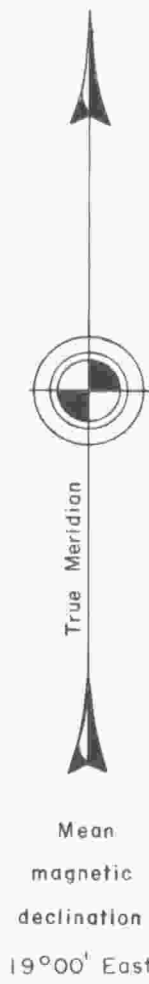


# TOWNSHIP 22 SOUTH, RANGE 8 WEST, OF THE WILLAMETTE MERIDIAN, OREGON.

## DEPENDENT RESURVEY AND SUBDIVISION OF SECTION 31



A history of surveys is contained in the field notes.

This plat represents a dependent resurvey of a portion of the subdivisional lines, T. 22 S., R. 8 W., Willamette Meridian, Oregon, and the subdivision of section 31.

The lottings and areas are as shown on the plat approved August 11, 1881 and accepted April 14, 1983.

The survey was executed by Joel E. Robb, Cadastral Surveyor, beginning July 20, 1983, and completed August 8, 1983, pursuant to Special Instructions dated July 8, 1983, under Group No. 1166, Oregon.

Timber in this area consists of fir, hemlock, cedar, maple, alder, chinquapin, and madrone.

UNITED STATES DEPARTMENT OF THE INTERIOR  
BUREAU OF LAND MANAGEMENT  
Portland, Oregon July 12, 1985

This plat is strictly conformable to the approved field notes, and the survey, having been correctly executed in accordance with the requirements of law and the regulations of this Bureau, is hereby accepted.

For the Director

*William W. Glenn*

Chief Cadastral Surveyor of Oregon

