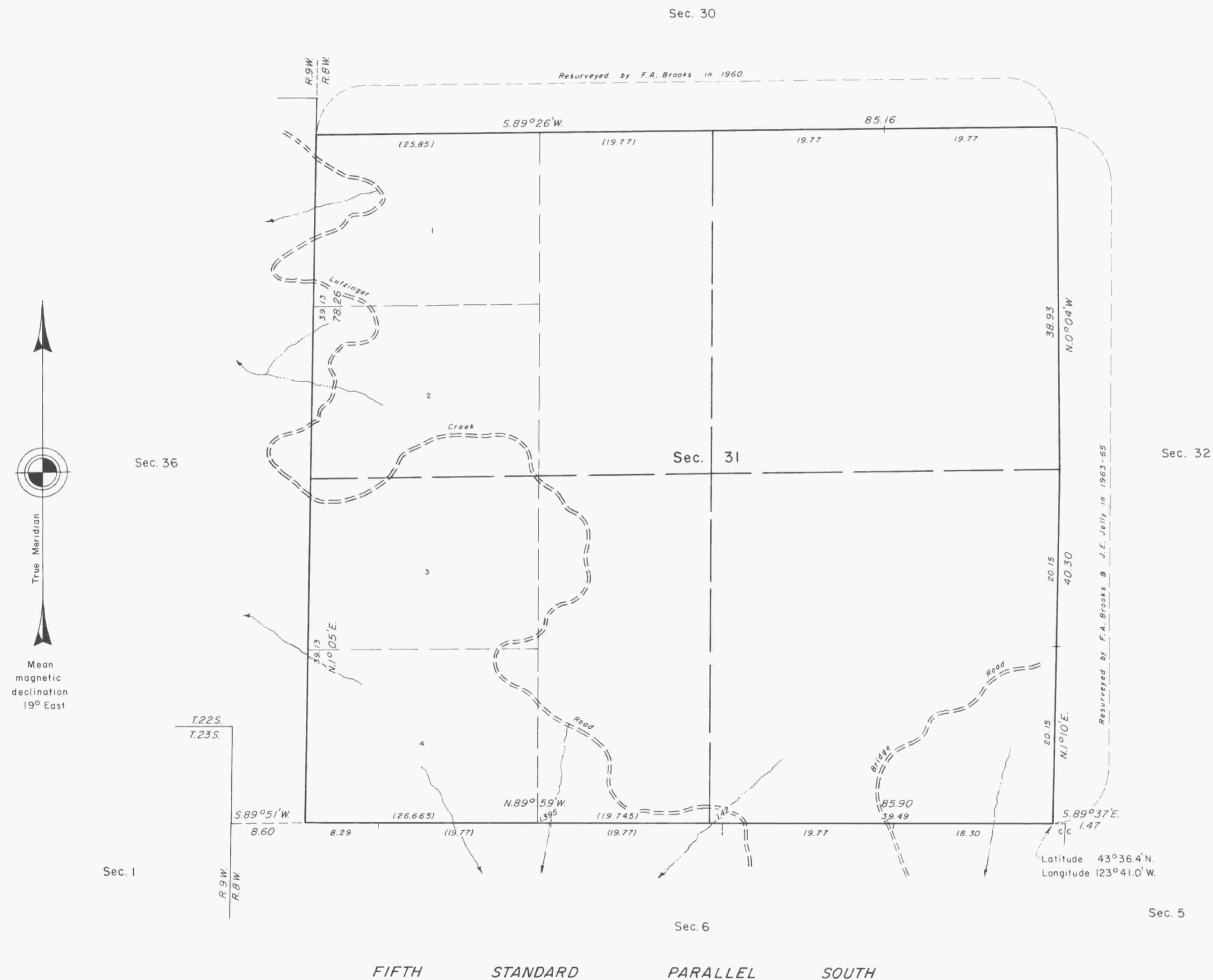


TOWNSHIP 22 SOUTH, RANGE 8 WEST, OF THE WILLAMETTE MERIDIAN, OREGON.

DEPENDENT RESURVEY



A history of surveys is contained in the field notes.

This plat represents a dependent resurvey of a portion of the south boundary (Fifth Standard Parallel South), and a portion of the west boundary, T. 22 S., R. 8 W., Willamette Meridian, Oregon, designed to restore the corners in their true original locations according to the best available evidence.

The lottings and areas are as shown on the plat approved August 11, 1881.

The survey was executed by Harvey E. Wofford, Cadastral Surveyor, beginning July 28, 1980 and completed September 16, 1980, pursuant to Special Instructions dated December 7, 1979, for Group No. 1005, Oregon.

Timber in this area consists of fir, hemlock, cedar, alder, maple, myrtle, chinquapin, willow, and dogwood.

UNITED STATES DEPARTMENT OF THE INTERIOR
 BUREAU OF LAND MANAGEMENT
 Portland, Oregon April 14, 1983

This plat is strictly conformable to the approved field notes, and the survey, having been correctly executed in accordance with the requirements of law and the regulations of this Bureau, is hereby accepted.

For the Director

William W. Glenn
 Chief Cadastral Surveyor of Oregon

