

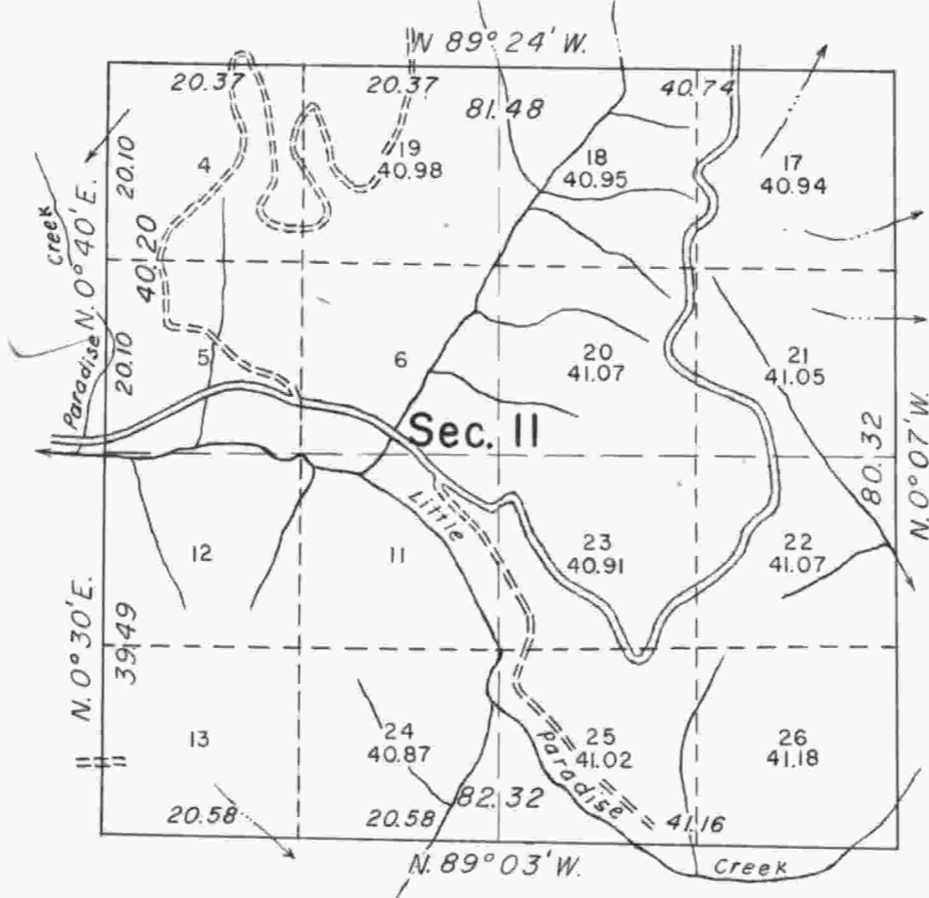
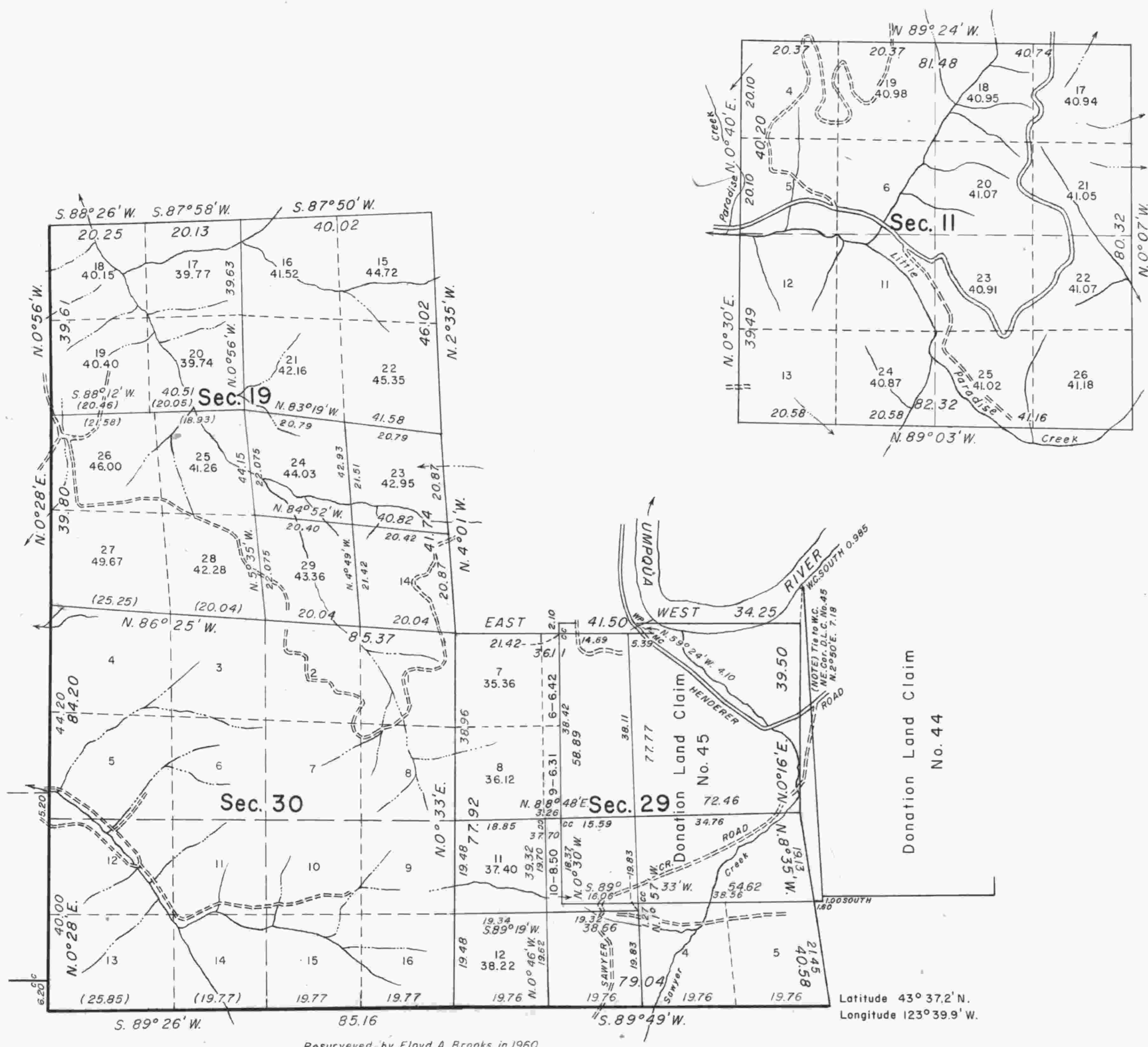
TOWNSHIP 22 SOUTH, RANGE 8 WEST, OF THE WILLAMETTE MERIDIAN, OREGON. DEPENDENT RESURVEY AND SUBDIVISION

Sec. 24

True Meridian

Mean Magnetic Declination 20°23' East

Sec. 25



This plat represents a retracement and reestablishment of a portion of the west boundary, subdivisional lines and Donation Land Claim lines, T. 22 S., R. 8 W., Willamette Meridian, Oregon, designed to restore the corners in their true original locations according to the best available evidence, and, the subdivision of sections 19 and 29.

The lottings and areas are as shown on the plats approved February 20, 1856, December 23, 1859, August 11, 1881, and November 28, 1881, except as new or modified hereon.

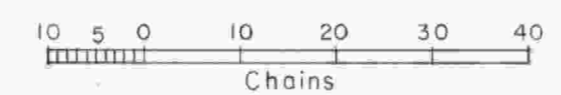
Portions of the west boundary, subdivisional lines, and meander lines were surveyed by Harvey Gordon and Charles T. Gardner in 1855-56. The boundaries of the Donation Land Claims were surveyed by Dennis Hathorn in 1856. The survey of the township was completed by William H. Byars in 1874 and 1881. The north half mile of the west boundary of section 19 and the line between sections 18 and 19 were resurveyed by George F. Rigby in 1931. A portion of the subdivisional lines were dependently resurveyed by Floyd A. Brooks in 1960. In 1963-65, Floyd A. Brooks and James E. Jelley dependently resurveyed a portion of the subdivisional lines.

The resurvey and subdivision of sections 19 and 29 were executed by Floyd A. Brooks and Peter A. Peterson, Cadastral Surveyors, August 16, 1965, to December 1, 1967, under Special Instructions dated August 3, 1965, and September 26, 1967, which provide for the surveys included under Group Nos. 595 and 657, Oregon, respectively.

T.22 S., R.9 W.

Sec. 36

Timber in this area consists of Douglas fir, hemlock, cedar, maple, alder, myrtle, chinquapin, white fir, ash, willow, oak, and madrone.



Area resurveyed: 2,651.34 Acres

Suspended February 4, 1993, see File 9632 (OR 942)

UNITED STATES DEPARTMENT OF THE INTERIOR
BUREAU OF LAND MANAGEMENT
Washington, D. C. July 25, 1969

This plat is strictly conformable to the approved field notes, and the survey, having been correctly executed in accordance with the requirements of law and the regulations of this Bureau, is hereby accepted.

For the Director
Clark J. Lumm
Chief, Division of Cadastral Survey