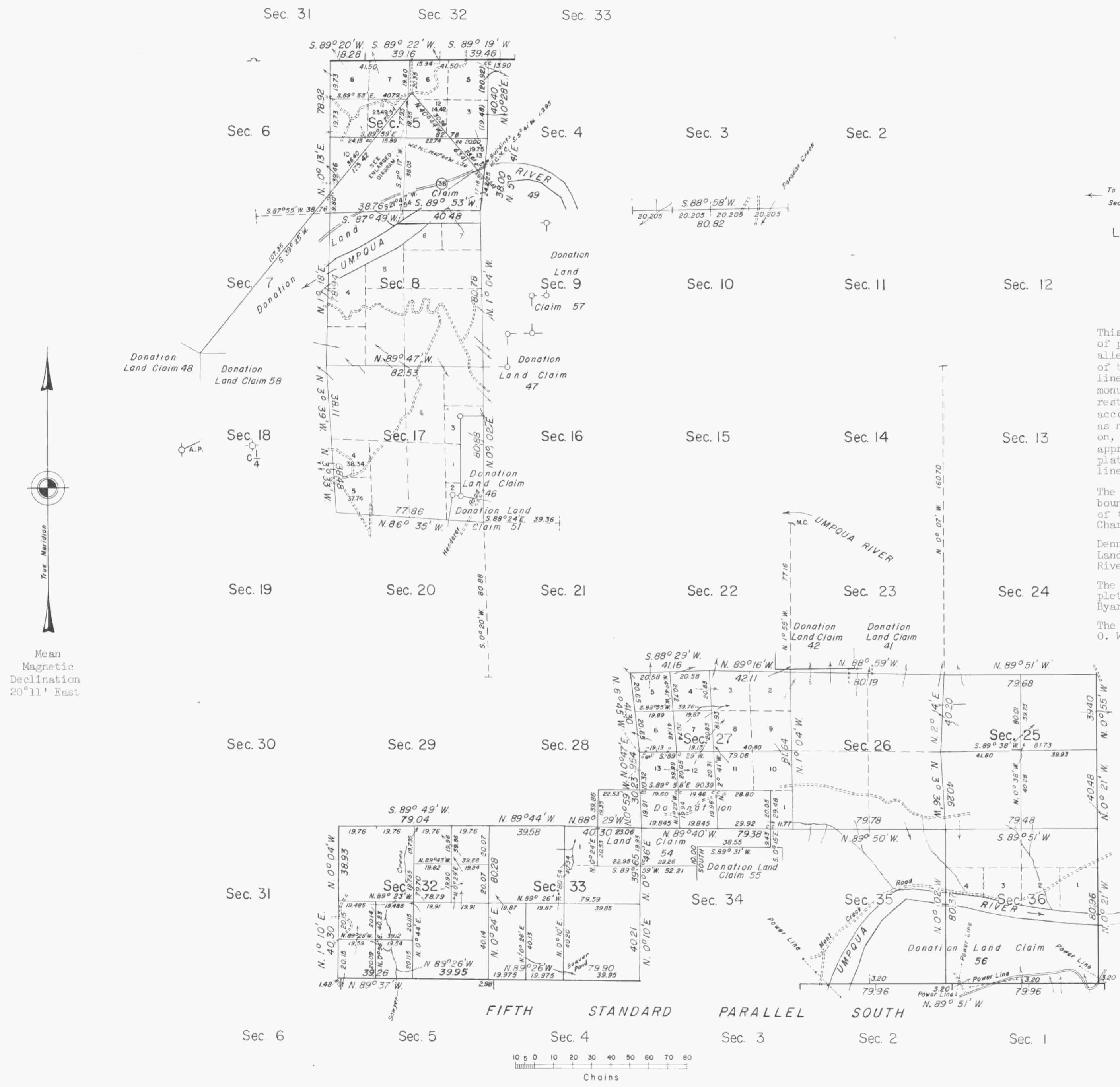


TOWNSHIP 22 SOUTH, RANGE 8 WEST, OF THE WILLAMETTE MERIDIAN, OREGON.

DEPENDENT RESURVEY, SUBDIVISION, AND REMONUMENTATION

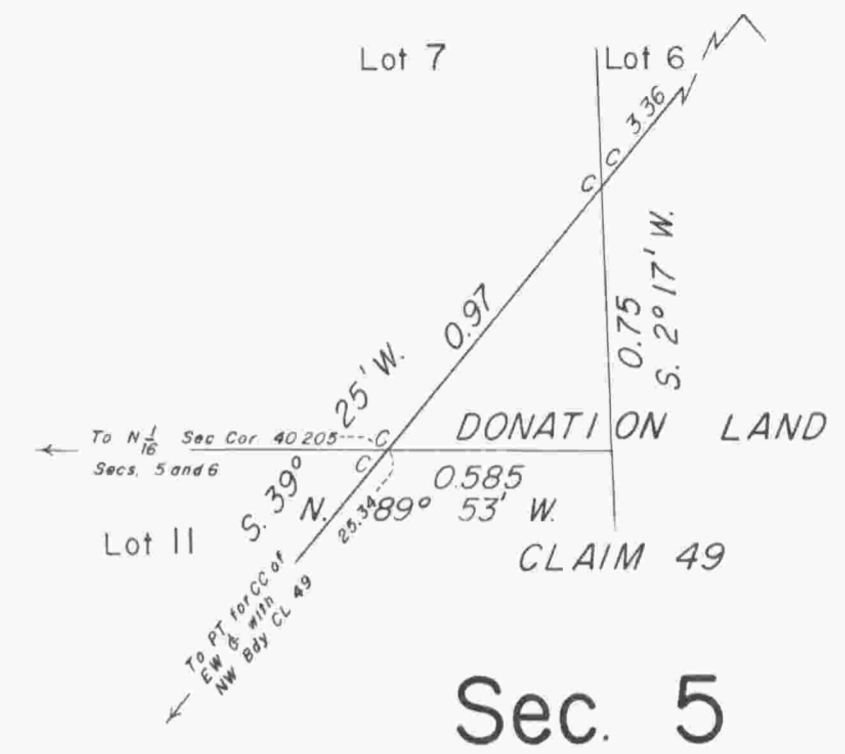


True Meridian
Mean Magnetic Declination 20°11' East

Timber in this area consists of fir, hemlock, cedar, maple, alder, chinquapin, and madrone.

Area resurveyed: 5,562.99 Acres

ENLARGED DIAGRAM



This plat represents a retracement and reestablishment of portions of the south boundary (Fifth Standard Parallel South), a portion of the east boundary, a portion of the north boundary, a portion of the subdivisional lines, and a portion of the claim lines; and, the remonumentation of certain original corners, designed to restore the corners in their true original locations according to the best available evidence. Excepting as new or modified vacant subdivisions are shown hereon, the lottings and areas are as shown on the plats approved August 11, 1881, and November 28, 1881. This plat also represents the survey of the subdivisional lines of sections 5, 25, 27, 32, and 33.

The east boundary and portions of the south and west boundaries, the subdivisional lines, and the meanders of the Umpqua River, surveyed by Harvey Gordon and Charles T. Gardner, in 1855-56.

Dennis Hathorn surveyed the boundaries of Donation Land Claims and remeasured portions of the Umpqua River, in 1856.

The survey of boundaries and subdivisional lines completed, including necessary resurveys, by William H. Byars, in 1874 and 1881.

The north mile of the west boundary resurveyed by Elmer O. Worrick, in 1894.

The standard corner of sections 2 and 3, T. 23 S., R. 8 W., remonumented by Williams R. Whipple in 1894.

Section 18 was resurveyed and subdivided by George F. Rigby, in 1931.

The west half of the north boundary was resurveyed by Norman D. Price, in 1945.

The east half of the north boundary was resurveyed by Marvin J. Lytle, in 1952.

Portions of the south boundary and subdivisional lines surveyed by Floyd A. Brooks in 1960 and 1962.

Surveys executed by Floyd A. Brooks and James E. Jelley, June 18, 1963, to March 25, 1965, under Special Instructions dated May 3, 1957, and June 13, 1963, and Supplemental Special Instructions dated March 16, 1965, which provide for the surveys included under Group Nos. 350 and 514, Oregon.

-- Corners remonumented under Group 350, Oregon.

UNITED STATES DEPARTMENT OF THE INTERIOR
BUREAU OF LAND MANAGEMENT
Washington, D. C. March 24, 1966

Latitude 43° 36.4' N.
Longitude 123° 35.0' W.

This plat is strictly conformable to the approved field notes, and the survey, having been correctly executed in accordance with the requirements of law and the regulations of this Bureau, is hereby accepted.

For the Director
E. L. Livingston
Chief, Division of Engineering

W.M.R.