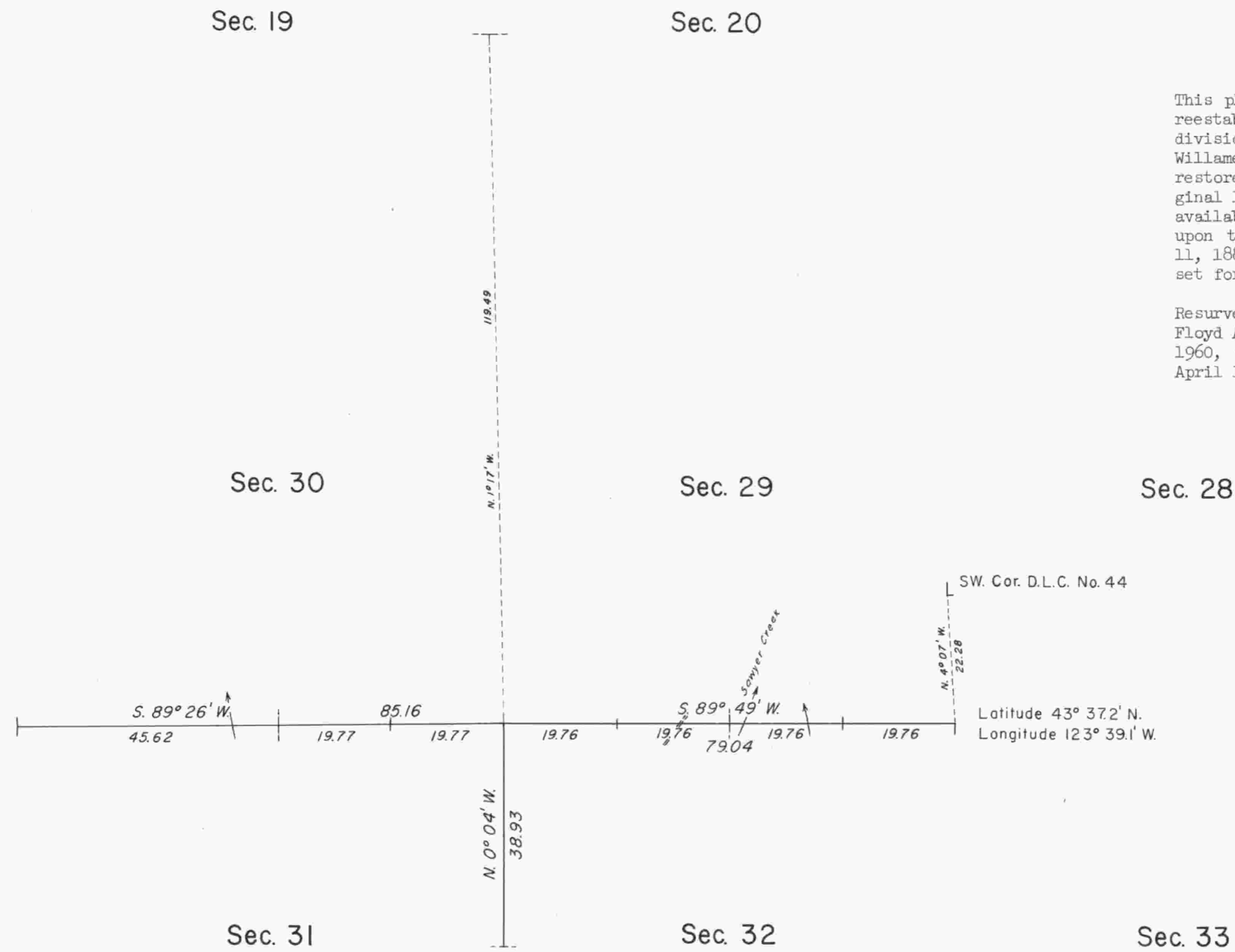
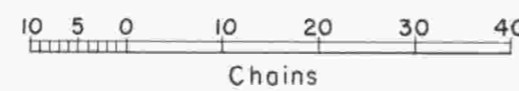
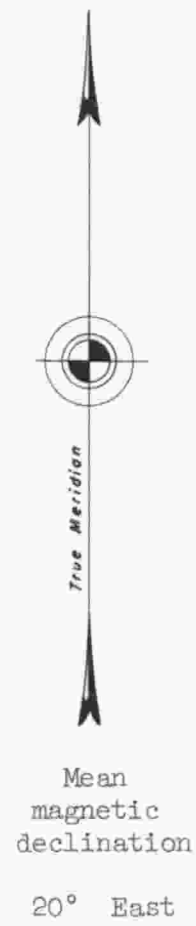


TOWNSHIP 22 SOUTH, RANGE 8 WEST, OF THE WILLAMETTE MERIDIAN, OREGON. DEPENDENT RESURVEY



This plat represents a retracement and reestablishment of a portion of the subdivisional lines of T. 22 S., R. 8 W., Willamette Meridian, Oregon, designed to restore the corners in their true original locations according to the best available evidence. Areas are as shown upon the township plat approved August 11, 1881. History of earlier surveys is set forth in the field note record.

Resurveys shown hereon were executed by Floyd A. Brooks, from April 21 to May 13, 1960, under special instructions dated April 11, 1960, for Group 436, Oregon.



Timber in this area consists of fir, hemlock, cedar, maple, alder, chinquapin, and madrone.

UNITED STATES DEPARTMENT OF THE INTERIOR
BUREAU OF LAND MANAGEMENT
Washington, D.C. January 31, 1962

This plat is strictly conformable to the approved field notes, and the survey, having been correctly executed in accordance with the requirements of law and the regulations of this Bureau, is hereby accepted.

For the Director

Chief, Division of Engineering