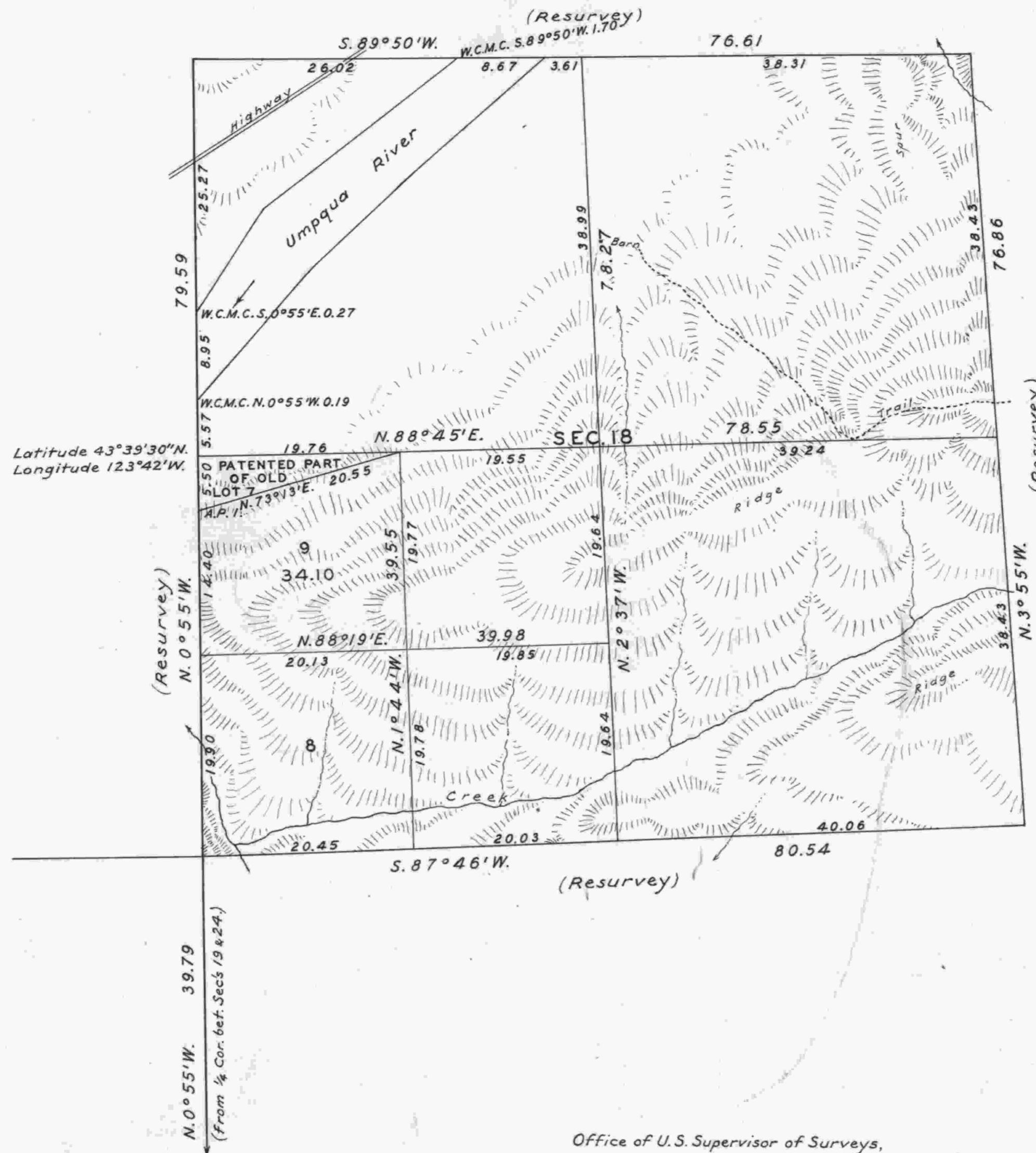


TOWNSHIP No. 22 SOUTH, RANGE No. 8 WEST,  
OF THE WILLAMETTE MERIDIAN, OREGON.  
SUPPLEMENTAL PLAT OF SECTION 18.

SCALE: 10 CHAINS TO AN INCH.



That part of original lot 7, containing approximately 35 acres, now shown as lot 9, Sec. 18, T. 22 S., R. 8 W., Will. Mer., Oregon, containing 34.10 acres, was reconveyed to the United States, August 29, 1928, by the Gardiner Mill Company in lieu selection Roseburg 015455 under the act of May 31, 1918 (40 Stat. 593), and accepted by the Commissioner of the General Land Office, December 8, 1928.

Mean Magnetic Declination 19° 35' E.

LINES DESIGNATED	BY WHOM SURVEYED	GROUP		MILEAGE		WHEN SURVEYED	
		No.	DATE	MLS.	CHS.	BEGUN	COMPLETED
Exterior	Geo. F. Rigby	143	April 18, 1931	1	39.38		
Subdivisional				5	70.36	Oct. 27, 1931	Nov. 4, 1931
Miscellaneous					20.55		

Office of U.S. Supervisor of Surveys,  
Denver, Colorado, Jan. 31, 1933.

The above supplemental plat of Section 18, Township No. 22 South, Range No. 8 West, of the Willamette Meridian, Oregon, is strictly conformable to the field notes of the survey thereof which have been examined and approved.

*Samuel H. Lincoln*  
U.S. Supervisor of Surveys.

DEPARTMENT OF THE INTERIOR  
GENERAL LAND OFFICE  
Washington, D.C., August 15, 1933.

The survey represented by this plat having been correctly executed in accordance with the requirements of law and the regulations of this office, is hereby accepted.

*Antoinette Frank*  
Assistant Commissioner.