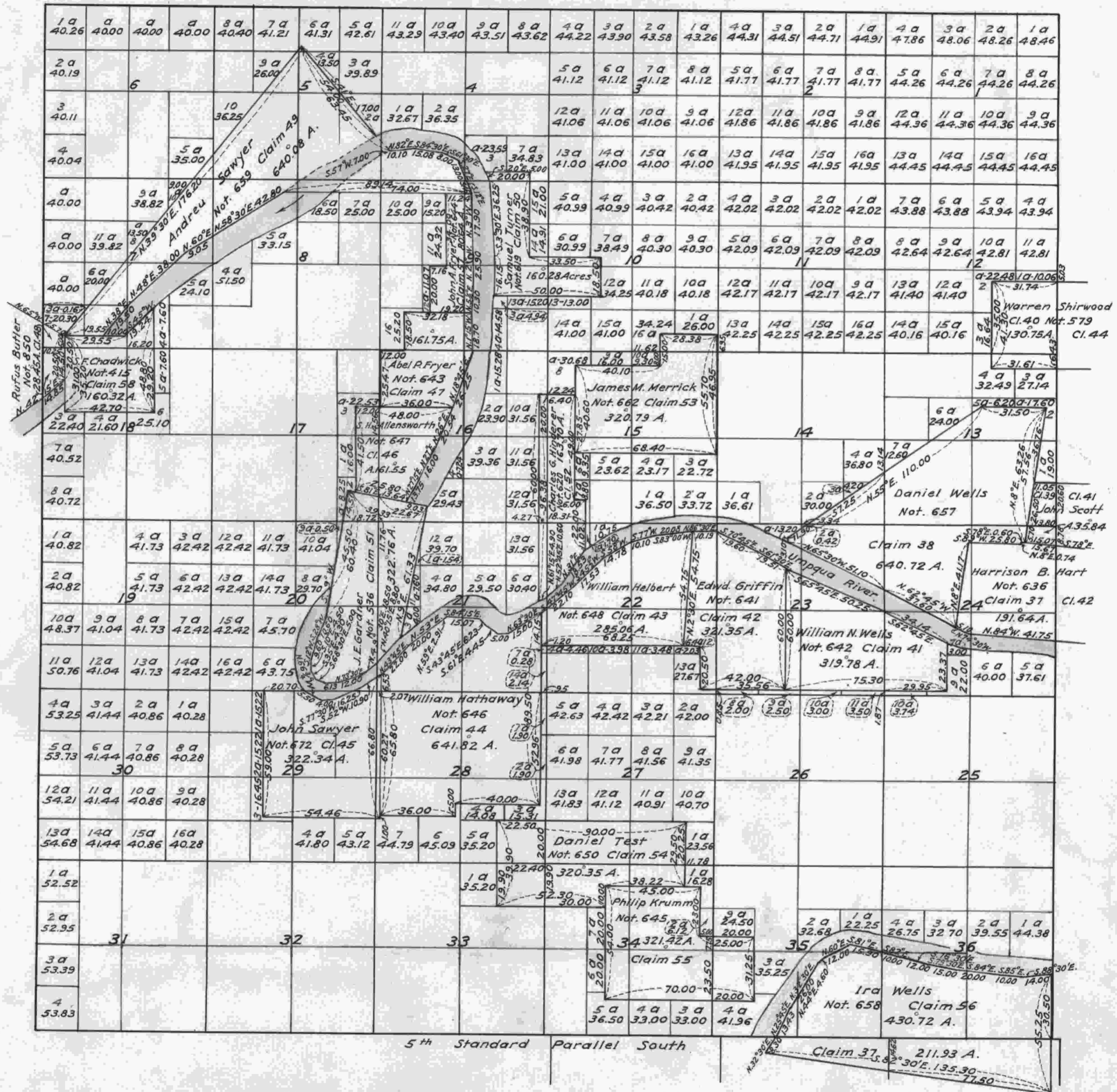


Township No 22 South, Range No 8 West of the Willamette Meridian, Oregon.



The above Map of claims in Township No. 22 South, Range No. 8 West, Willamette Meridian, Oregon, is strictly conformable to the field notes of the survey thereof on file in this Office, which have been examined and approved.  
 Surveyor General's Office,  
 Eugene City, December 23rd, 1859.

(signed) W. W. Chapman.  
 Sur. Gen'l. of Oregon.

I certify this to be a correct copy of the original plat on file in this office.  
 Office of District Cadastral Engineer,  
 Portland, Oregon, October 31, 1925.

*E. P. Rand*  
 District Cadastral Engineer.