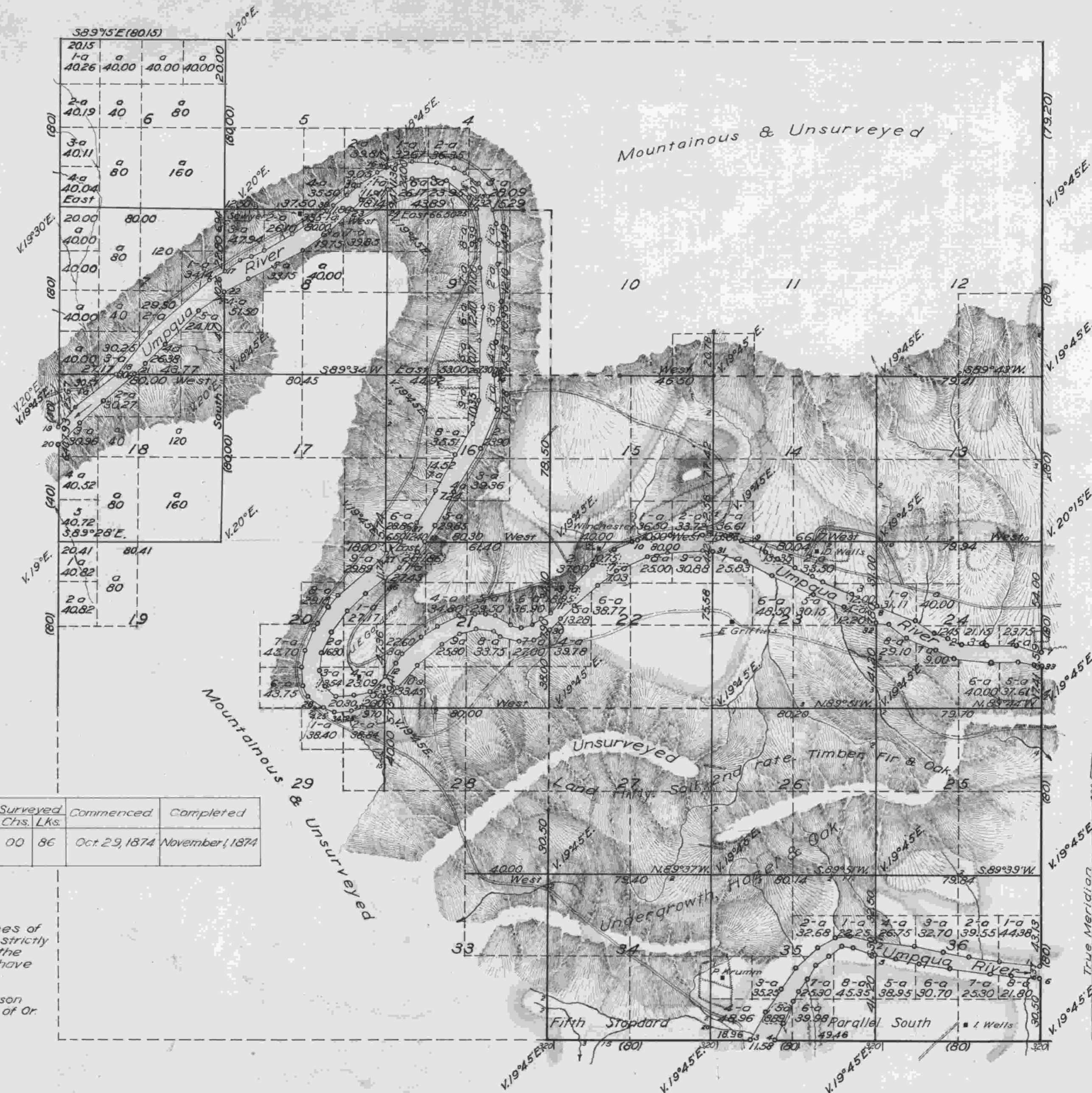


TOWNSHIP NO 22 SOUTH, RANGE NO 8 WEST OF THE WILLAMETTE MERIDIAN, OREGON.



| AREA | |
|----------|---------|
| Sections | Acres |
| 5 | 200.00 |
| 6 | 640.66 |
| 7 | 400.00 |
| 8 | 320.00 |
| 9 | 80.00 |
| 17 | 320.00 |
| 18 | 521.24 |
| 19 | 161.64 |
| Total | 2643.54 |

| Lines | Contractor | Contract No. | Contract Date | Amt. Surveyed Mls. Chs. Lks. | Commenced | Completed |
|--------------|------------|--------------|----------------|------------------------------|---------------|------------------|
| Subdivisions | W.H. Byars | 202 | March 11, 1874 | 6 00 86 | Oct. 29, 1874 | November 1, 1874 |

Blue lines indicate New Surveys.

The above Map of the subdivisional lines of Fract. T. 22 S. R. 8 W. Will. Mer. Oregon is strictly conformable to the original field notes of the survey thereof on file in this office which have been examined and approved.
 U. S. Surveyor General's Office
 Portland, Oregon, August 20, 1875 Ben Simpson
 Sur. Gen'l of Or.

| Surveys designated. | By whom surveyed | Contract | | Amt. of Surveys | | | When surveyed |
|------------------------|------------------|----------|--------------------|-----------------|--------|-------|-------------------|
| | | No. | Date | Miles | chains | links | |
| Township Lines | Gordon & Gardner | 52 | February 17th 1855 | | 40 | 00 | Sept'r. 24th 1855 |
| Subdivisions | Gordon & Gardner | 52 | | 31 | 31 | 00 | Feb'y. 20th 1856 |
| Meanders | Gordon & Gardner | 52 | | 27 | 05 | 14 | |
| Reclaiming Stand Parl. | | | | 3 | 00 | 00 | |
| Total number of acres | 10783.74 | | | | | | |

The above Map of Fractional Township No. 22 South of Range No. 8 West of the Willamette Meridian, Territory of Oregon is strictly conformable to the field notes of the survey thereof on file in this office which have been examined and approved.
 Surveyor General's Office
 Salem, February 20th 1856 C.K. Gardner
 Surv. Gen. of Oregon

Public Survey Office
 Portland, Oregon.
 September 3, 1935.
 I certify this to be a correct copy of the original plat on file in this office.
Joseph A. Gaurig
 Office Cadastral Engineer