

TOWNSHIP 22 SOUTH, RANGE 7 WEST, OF THE WILLAMETTE MERIDIAN, OREGON  
DEPENDENT RESURVEY AND SUBDIVISION OF SECTIONS 11, 13, AND 14

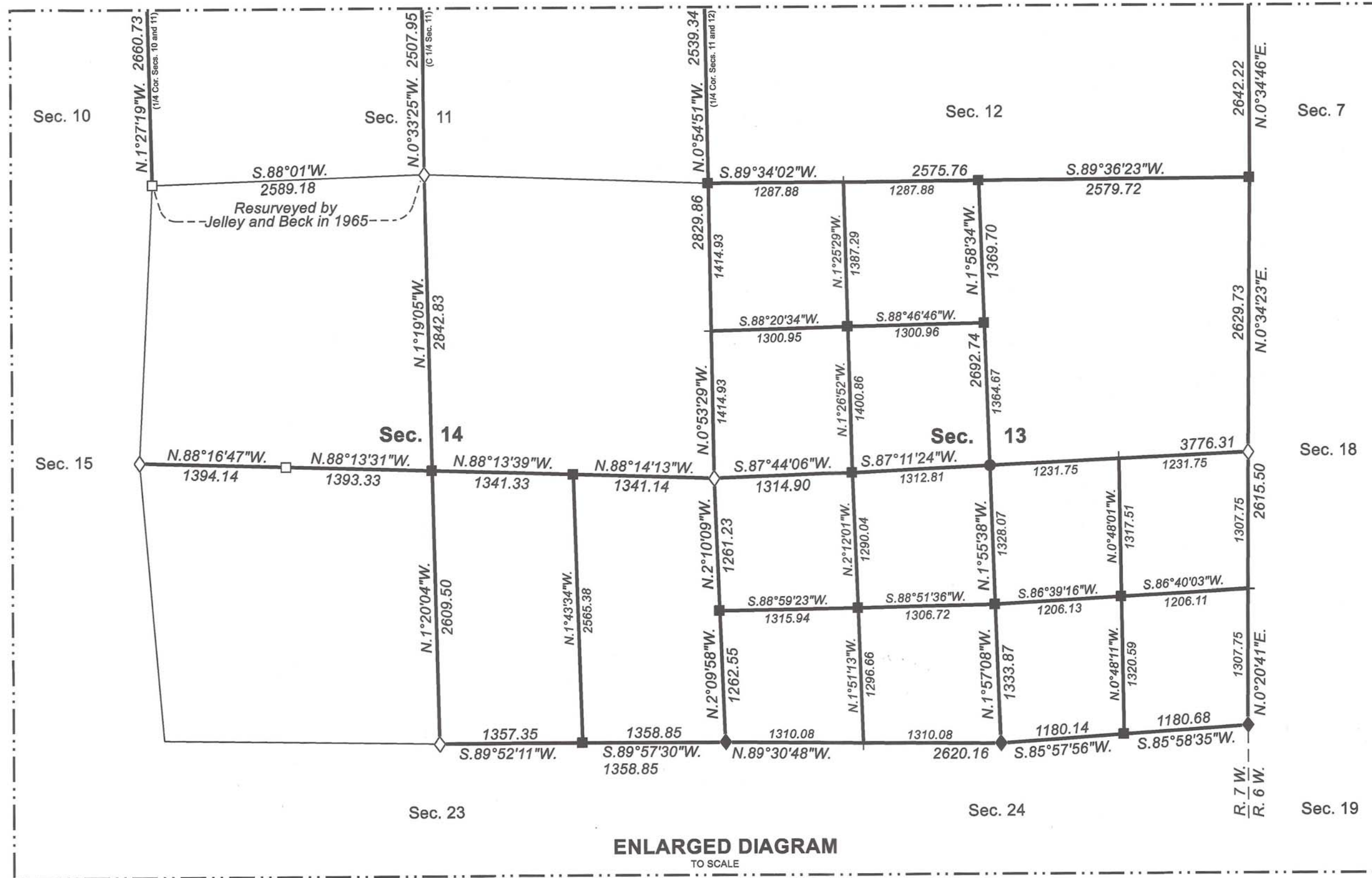
SHEET 2 OF 2

FILED

Date: 1/4/2022 By: JC  
This survey consists of:  
Map: T22-7 2021-1 A B  
Line VOL. 59  
Notes: PAGES 23862-23907

DOUGLAS COUNTY  
SURVEYOR

OFFICIALLY FILED: 6/21/2021



LEGAL SUBDIVISION	OFFICIAL ACRES
SECTION 13	
NE1/4 NE1/4	38.88
NW1/4 NE1/4	39.88
SW1/4 NE1/4	38.86
SE1/4 NE1/4	37.94
SE1/4 NW1/4	41.48
NE1/4 SW1/4	39.36
SW1/4 SW1/4	38.55
SE1/4 SW1/4	39.49
NE1/4 SE1/4	36.68
NW1/4 SE1/4	37.00
SE1/4 SE1/4	35.94
SECTION 14	
NE1/4 SE1/4	39.23
SE1/4 SE1/4	39.53
TOTAL AREA	502.42
FEDERAL INTEREST LAND RESURVEYED IN SECTIONS 13 AND 14	

**LEGEND**

- ◊ Original corner previously remonumented
- ◆ Original corner remonumented this survey
- Corner previously established or reestablished
- Corner previously established or reestablished; remonumented this survey
- Corner established or reestablished this survey
- + Corner point calculated, no monument set

UNITED STATES DEPARTMENT OF THE INTERIOR  
BUREAU OF LAND MANAGEMENT

Portland, Oregon

This plat is strictly conformable to the approved field notes, and the survey, having been correctly executed in accordance with the requirements of law and the regulations of this Bureau, is hereby accepted.

For the Director

*Mary J. M. Hartzel*

Chief Cadastral Surveyor of Oregon

*March 24, 2021*

Date

