

TOWNSHIP 22 SOUTH, RANGE 7 WEST, OF THE WILLAMETTE MERIDIAN, OREGON

DEPENDENT RESURVEY AND SUBDIVISION OF SECTIONS 11, 13, AND 14

FILED
Date: 1/4/2022 By: JC
This survey consists of: SHEET 1 OF 2
Map: T22-7 2021-1 A B
Line VOL. 59
Notes: PAGES 23862-23907

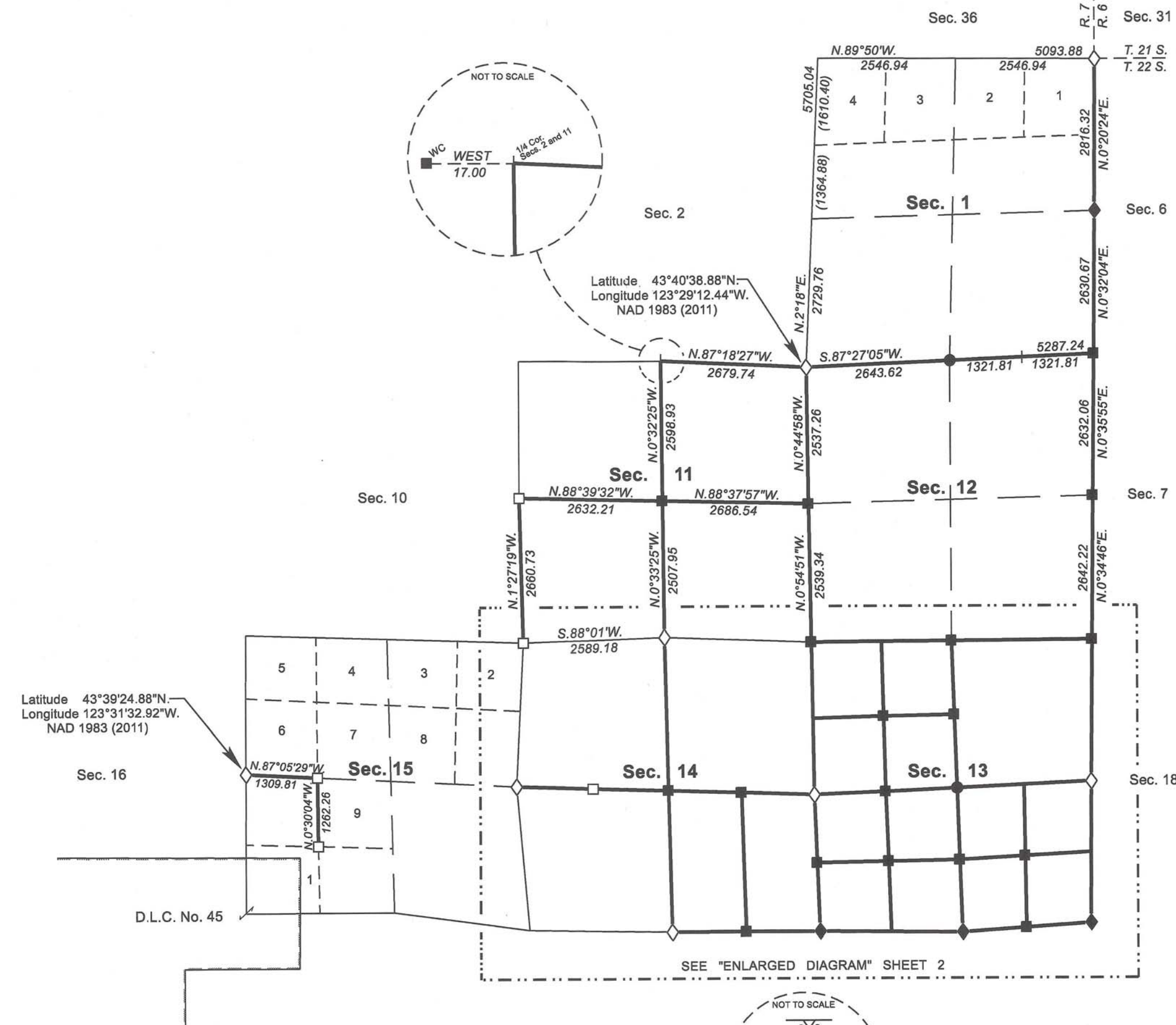
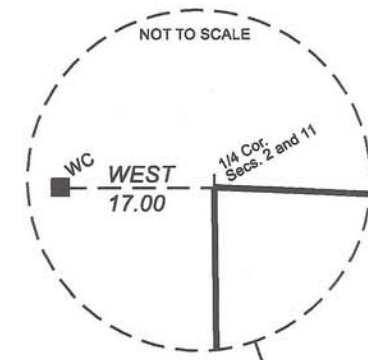
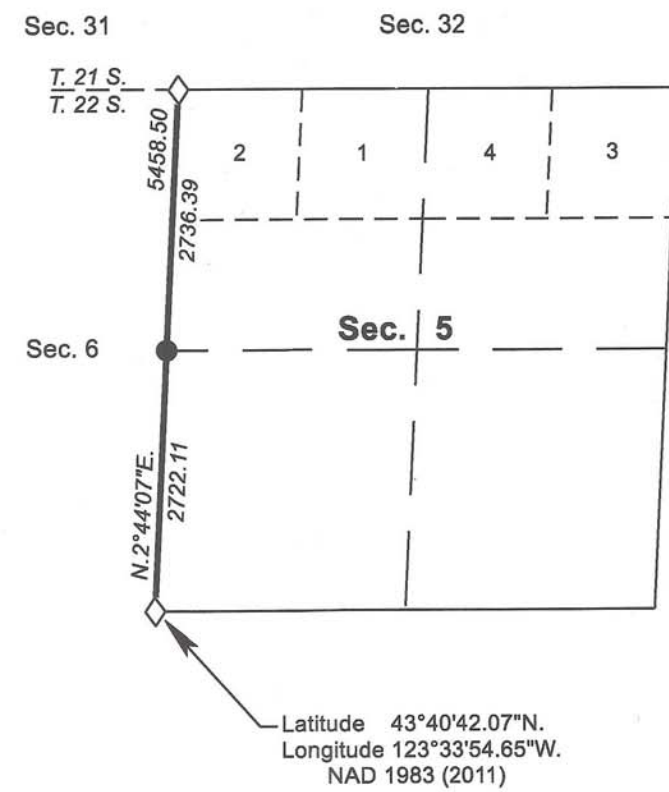
DOUGLAS COUNTY
SURVEYOR

A history of surveys, corner descriptions, and other relevant information are contained in the field notes.

This plat represents the dependent resurvey of a portion of the east boundary, subdivisional lines, and subdivision of section lines of section 15, designed to restore the corners in their true original locations according to the best available evidence, and the subdivision of sections 11, 13, and 14, Township 22 South, Range 7 West, Willamette Meridian, Oregon.

Official areas based on the measurements of this survey have been returned for Federal interest land where indicated. Aliquot part legal subdivisions retain their aliquot characteristics and refer to precisely the same land as that which was previously identified by its original survey or description. Except as indicated hereon, the lottings and areas are as shown on the plats approved April 26, 1872, and March 25, 1898, and the plat accepted June 14, 1967.

Survey executed by Jeffrey O. Covington, Cadastral Surveyor, beginning May 9, 2016, and completed March 28, 2018, pursuant to special instructions approved April 28, 2016, and supplemental special instructions approved March 24, 2017, for Group No. 2824, Oregon.



LEGEND

- ◇ Original corner previously remonumented
- ◆ Original corner remonumented this survey
- Corner previously established or reestablished
- Corner previously established or reestablished; remonumented this survey
- Corner established or reestablished this survey
- + Corner point calculated, no monument set

NOTE:
The lightweight lines with bearings and distances shown in section 1 were surveyed by Boyd W. Peterson in 1986, and were utilized to calculate the Federal interest land in section 1.

The lightweight line with bearing and distance shown in section 11 was surveyed by John M. Jelley and Donald R. Beck in 1965, and was utilized to calculate the Federal interest land in section 11.

| LEGAL SUBDIVISION | OFFICIAL ACRES |
|-------------------------------------------------------|----------------|
| SECTION 1 | |
| LOT 1 | 45.05 |
| LOT 2 | 45.69 |
| SW1/4 NE1/4 | 39.22 |
| SE1/4 NE1/4 | 38.72 |
| LOT 3 | 46.32 |
| LOT 4 | 46.95 |
| SW1/4 NW1/4 | 40.18 |
| SE1/4 NW1/4 | 39.68 |
| NE1/4 SW1/4 | 40.23 |
| NW1/4 SW1/4 | 40.58 |
| SW1/4 SW1/4 | 40.85 |
| SE1/4 SW1/4 | 40.53 |
| NE1/4 SE1/4 | 39.58 |
| NW1/4 SE1/4 | 39.93 |
| SW1/4 SE1/4 | 40.19 |
| SE1/4 SE1/4 | 39.87 |
| SECTION 11 | |
| NE1/4 NE1/4 | 39.23 |
| NW1/4 NE1/4 | 39.70 |
| SW1/4 NE1/4 | 39.77 |
| SE1/4 NE1/4 | 39.30 |
| NE1/4 SW1/4 | 38.29 |
| NW1/4 SW1/4 | 39.43 |
| SW1/4 SW1/4 | 39.13 |
| SE1/4 SW1/4 | 37.99 |
| TOTAL AREA | 976.41 |
| FEDERAL INTEREST LAND RESURVEYED IN SECTIONS 1 AND 11 | |

UNITED STATES DEPARTMENT OF THE INTERIOR
BUREAU OF LAND MANAGEMENT

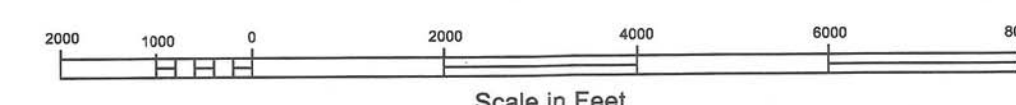
Portland, Oregon

This plat is strictly conformable to the approved field notes, and the survey, having been correctly executed in accordance with the requirements of law and the regulations of this Bureau, is hereby accepted.

For the Director
Mary J. M. Hart
Chief Cadastral Surveyor of Oregon

March 24, 2021

Date



OFFICIALLY FILED: 6/21/2021