

# TOWNSHIP 22 SOUTH, RANGE 7 WEST, OF THE WILLAMETTE MERIDIAN, OREGON

## DEPENDENT RESURVEY

FILED  
 Date: 9/29/2020 By: JC  
 This survey consists of:  
 Map: PLAT: T22-7 2020-1  
 Narrative: VOL 59  
 Corner Rpt: PGS 23740-23748  
 DOUGLAS COUNTY  
 SURVEYOR

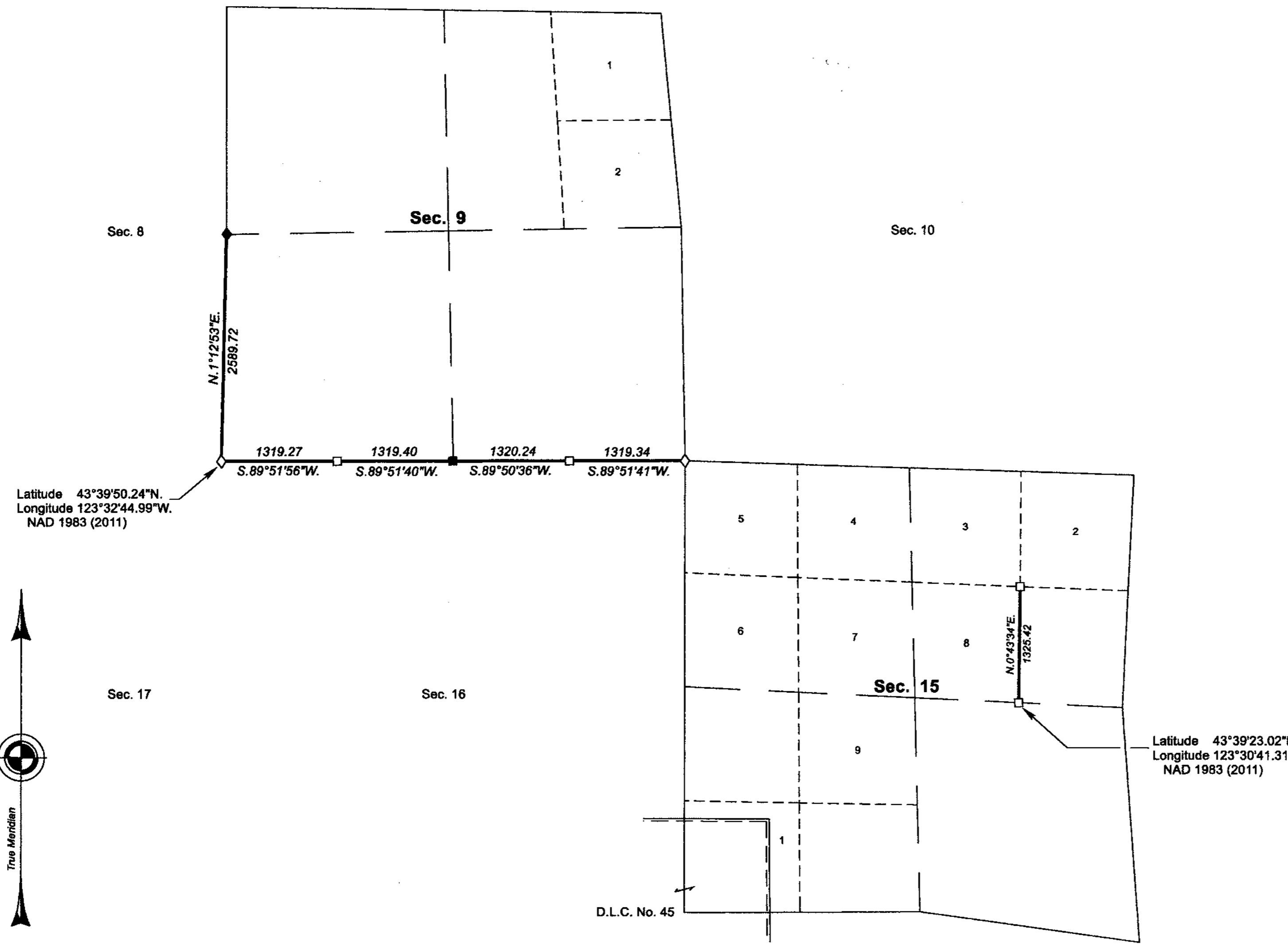
OFFICIALLY FILED: 8/21/2020

A history of surveys, corner descriptions, and other relevant information are contained in the field notes.

This plat represents the dependent resurvey of a portion of the subdivisional lines and the subdivision of section lines of section 15, designed to restore the corners in their true original locations according to the best available evidence, Township 22 South, Range 7 West, Willamette Meridian, Oregon.

Except as indicated hereon, the lottings and areas are as shown on the plats approved April 26, 1872, March 25, 1898, and June 14, 1967.

Survey executed by Jeffrey O. Covington, Cadastral Surveyor, beginning April 17, 2018 and completed May 10, 2018, pursuant to special instructions approved September 8, 2017 for Group No. 2892, Oregon.



Latitude 43°39'50.24\"N.  
 Longitude 123°32'44.99\"W.  
 NAD 1983 (2011)

Latitude 43°39'23.02\"N.  
 Longitude 123°30'41.31\"W.  
 NAD 1983 (2011)



**LEGEND**

- ◇ Original corner previously remonumented
- ◆ Original corner remonumented this survey
- Corner previously established or reestablished
- Corner previously established or reestablished; remonumented this survey

UNITED STATES DEPARTMENT OF THE INTERIOR  
 BUREAU OF LAND MANAGEMENT  
 Portland, Oregon

This plat is strictly conformable to the approved field notes, and the survey, having been correctly executed in accordance with the requirements of law and the regulations of this Bureau, is hereby accepted.

For the Director  
*Mary J. M. Heath*  
 Chief Cadastral Surveyor of Oregon

*May 18, 2020*  
 Date

D. C. W.

