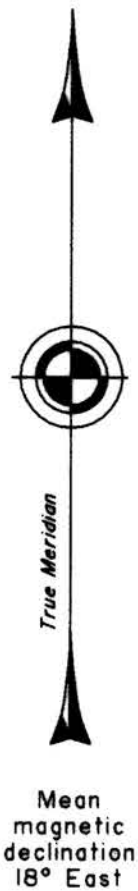
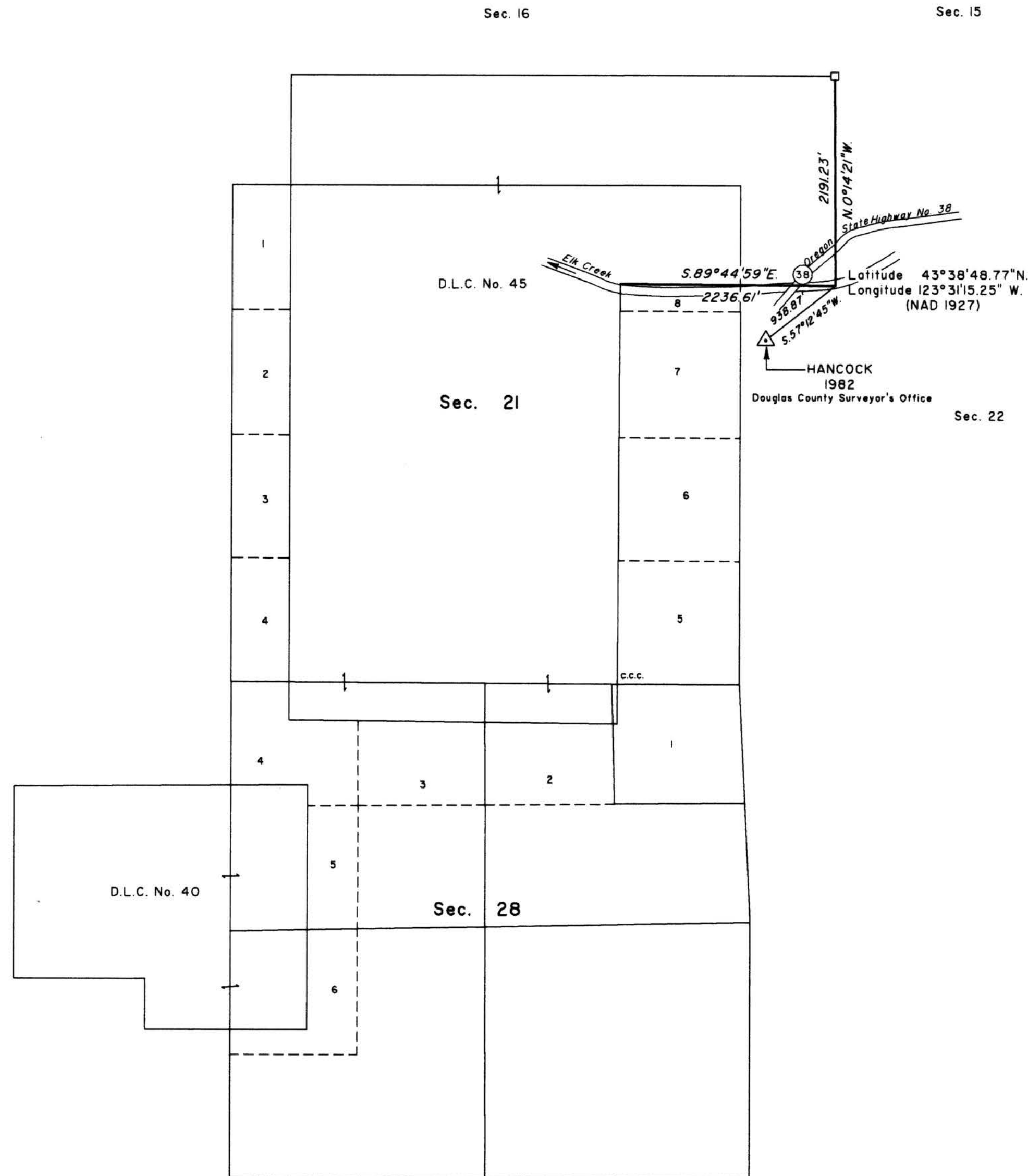


TOWNSHIP 22 SOUTH, RANGE 7 WEST, OF THE WILLAMETTE MERIDIAN, OREGON

CORRECTIVE DEPENDENT RESURVEY



A history of surveys is contained in the field notes.

This plat represents a corrective dependent resurvey of a portion of the boundary of Donation Land Claim No. 45 T. 22 S., R. 7 W., Willamette Meridian, Oregon, designed to restore the corners in their true original locations according to the best available evidence.

Measured distances and directions have been adjusted by Cadastral Measurement Management for Windows (WinCMM), computer software that incorporates a least squares adjustment routine. The adjusted bearings and distances are reported to the nearest second and 0.01 foot.

The lottings and areas are as shown on the plats approved February 20, 1856, May 20, 1858 and April 26, 1872 and the plat accepted June 23, 1998.

The survey was executed by Timothy J. Moore, Cadastral Surveyor, beginning December 16, 2002, and completed January 30, 2003, pursuant to Special Instructions dated October 1, 2002, under Group Number 2034, Oregon.

Timber in this area consists of fir, cedar, hemlock, pine, madrone, chinquapin, oak, yew, maple, and alder.

The tie to the geodetic control station is reported as mean bearing and sea level distance.

NOTE:
The remainder of the east boundary and the south boundary of Donation Land Claim No. 45, the mile between sections 21 and 28, and the north 7 mile between sections 27 and 28, was resurveyed and section 28 subdivided by Bryan S. Seibold, Cadastral Surveyor, in 1996. See the plat accepted June 23, 1998 for the survey information.

LEGEND
□ Corner previously established or reestablished

UNITED STATES DEPARTMENT OF THE INTERIOR
BUREAU OF LAND MANAGEMENT

Portland, Oregon September 13, 2004

This plat is strictly conformable to the approved field notes, and the survey, having been correctly executed in accordance with the requirements of law and the regulations of this Bureau, is hereby accepted.

For the Director
Mary J. M. Hart
Chief Cadastral Surveyor of Oregon

