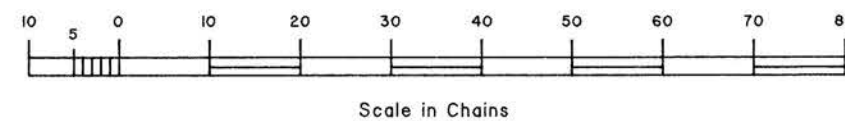
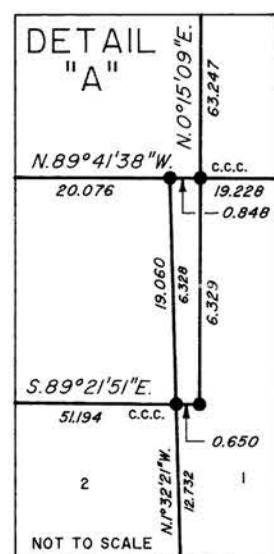
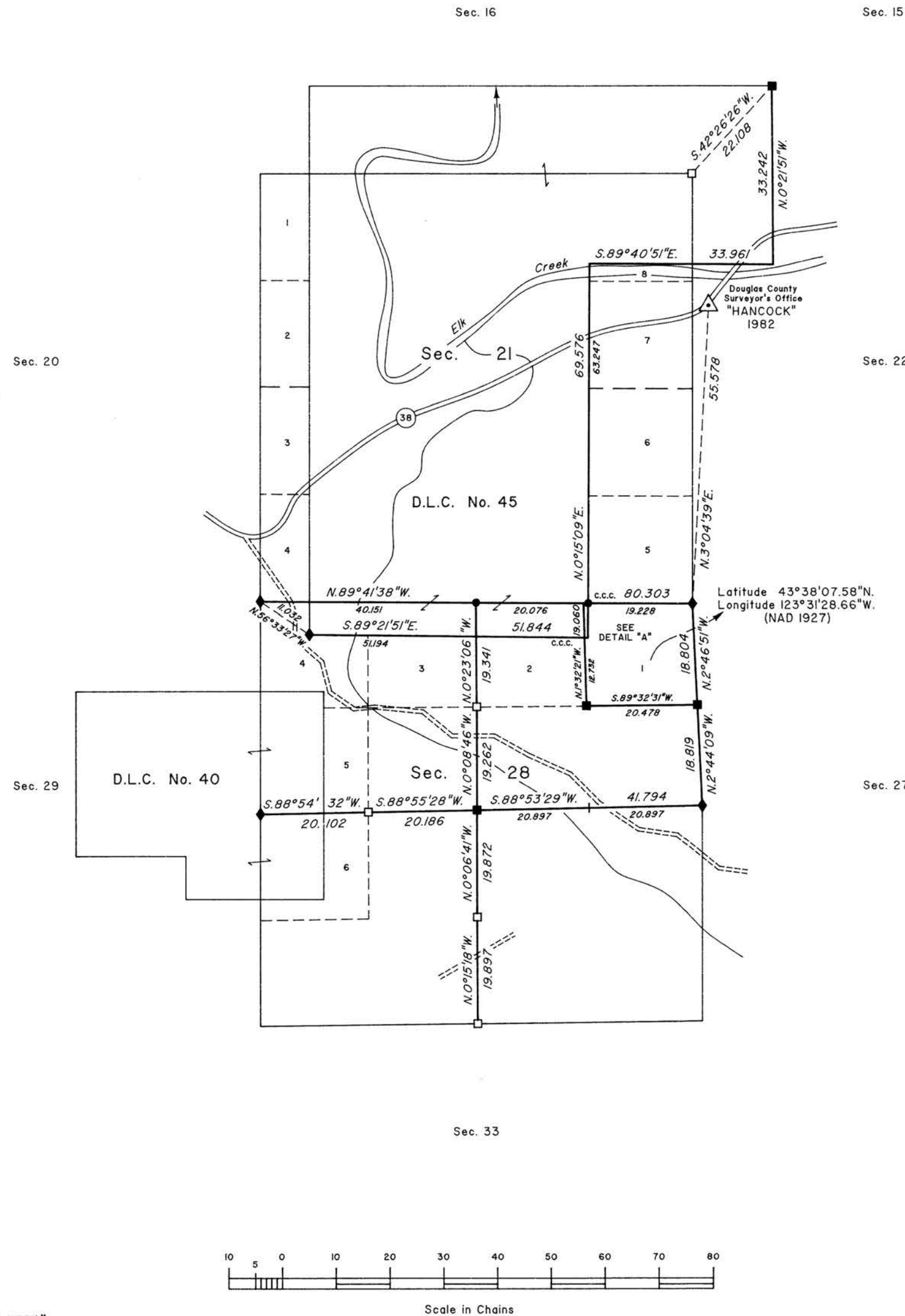
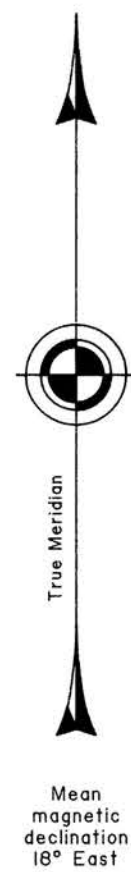


TOWNSHIP 22 SOUTH, RANGE 7 WEST, OF THE WILLAMETTE MERIDIAN, OREGON

DEPENDENT RESURVEY AND SUBDIVISION OF SECTION 28



A history of surveys is contained in the field notes.

This plat represents a dependent resurvey of a portion of the subdivision lines and boundaries of Donation Land Claim No. 45, T. 22 S., R. 7 W., Willamette Meridian, Oregon, designed to restore the corners in their true original locations according to the best available evidence, and the subdivision of section 28.

Measured distances and directions have been adjusted by Cadastral Measurement Management (CMM), a computer program that incorporates a least squares adjustment routine. The adjusted bearings and distances are reported to the nearest second and 0.001 chain.

The lottings and areas are as shown on the plat approved February 20, 1856, May 20, 1858 and April 26, 1872.

The survey was executed by Bryan S. Seibold, Cadastral Surveyor, beginning April 23, 1996, and completed June 25, 1996, pursuant to Special Instructions dated April 3, 1996, under Group Number 1797, Oregon.

Timber in this area consists of fir, cedar, hemlock, pine, madrone, chinquapin, oak, yew, maple and alder.

The tie to the geodetic control station is reported as mean bearing and sea level distance.

LEGEND

- ◆ Original corner remonumented this survey
- Corner previously established or reestablished
- Corner previously established or reestablished; remonumented this survey
- Corner established or reestablished this survey

UNITED STATES DEPARTMENT OF THE INTERIOR
BUREAU OF LAND MANAGEMENT

Portland, Oregon

June 23, 1998

This plat is strictly conformable to the approved field notes, and the survey, having been correctly executed in accordance with the requirements of law and the regulations of this Bureau, is hereby accepted.

For the Director

Wayne M. Gardner

Chief Cadastral Surveyor of Oregon

"Suspended August 28, 2002 see File 9632(OR957)"

"Suspension Lifted, September 15, 2004, File 9632 (OR957).
Refer to plat accepted September 13, 2004."