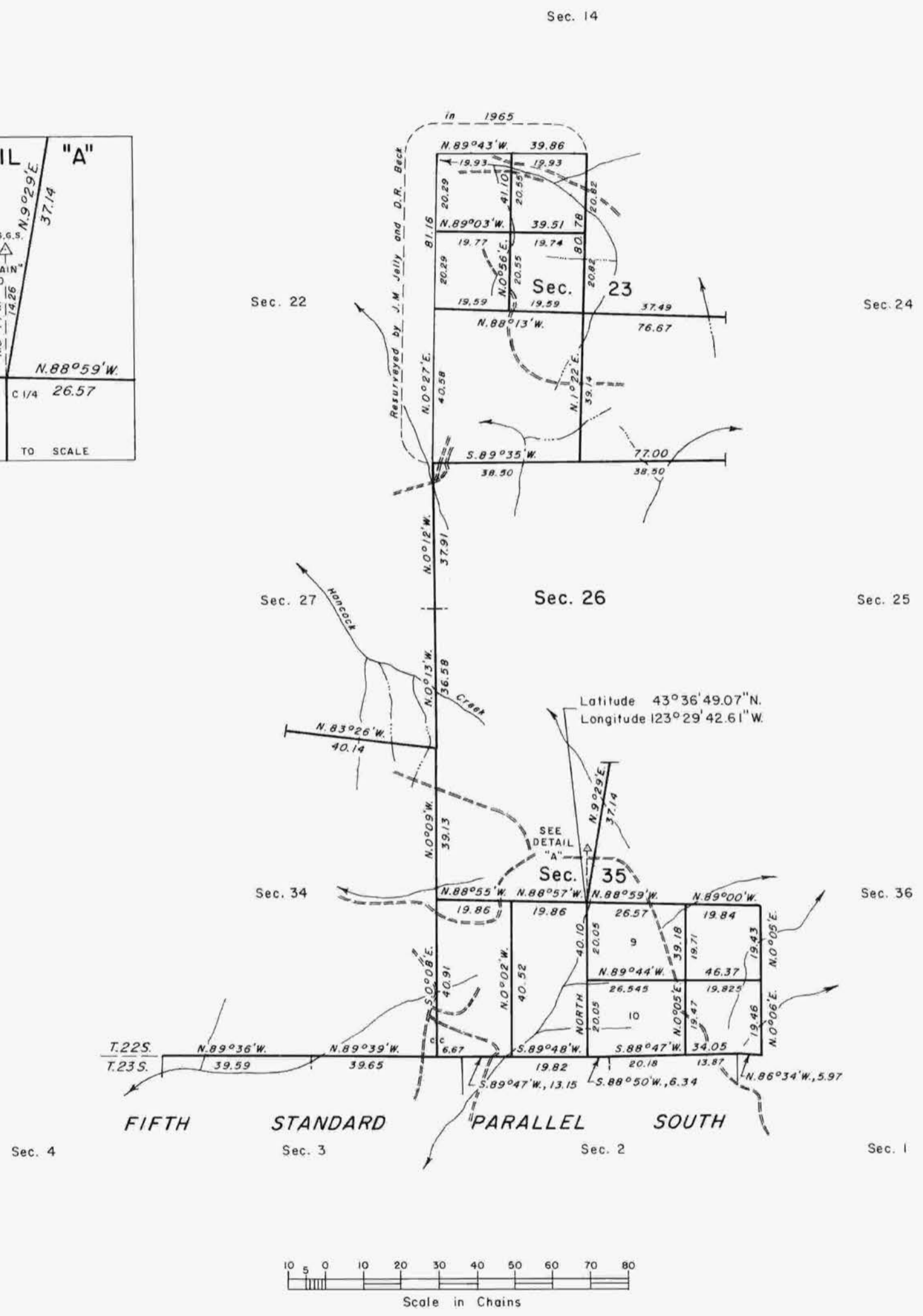
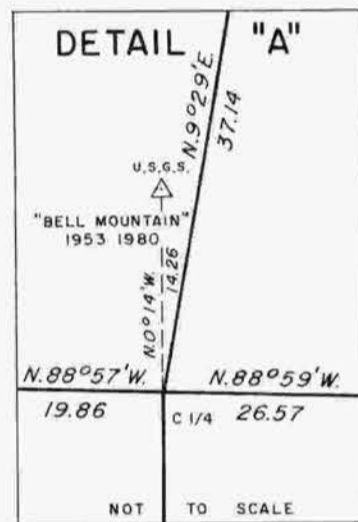


TOWNSHIP 22 SOUTH, RANGE 7 WEST, OF THE WILLAMETTE MERIDIAN, OREGON.

DEPENDENT RESURVEY, AND SUBDIVISION OF SECTIONS 23 AND 35



The history of surveys is contained in the field notes.

This plat represents a dependent resurvey of a portion of the north boundary (Fifth Standard Parallel South), T. 23 S., R. 7 W., and a portion of the subdivisional lines, T. 22 S., R. 7 W., Willamette Meridian, Oregon, designed to restore the corners in their true original locations according to the best available evidence, and the subdivision of sections 23 and 35.

The lottings and areas are as shown on the plats approved April 26, 1872, and March 25, 1898.

The survey was executed by Wayne L. Rogers and Lance J. Bishop, Cadastral Surveyors, beginning April 9, 1984, and completed July 17, 1984, pursuant to Special Instructions dated May 23, 1983, and Supplemental Special Instructions dated December 12, 1983, under Group Number 1160, Oregon.

Timber in this area consists of fir, hemlock, cedar, oak, ash, madrone, maple, chinquapin, and alder.

UNITED STATES DEPARTMENT OF THE INTERIOR
BUREAU OF LAND MANAGEMENT
Portland, Oregon May 1, 1987

This plat is strictly conformable to the approved field notes, and the survey, having been correctly executed in accordance with the requirements of law and the regulations of this Bureau, is hereby accepted.

For the Director

William W. Glenn
Chief Cadastral Surveyor of Oregon