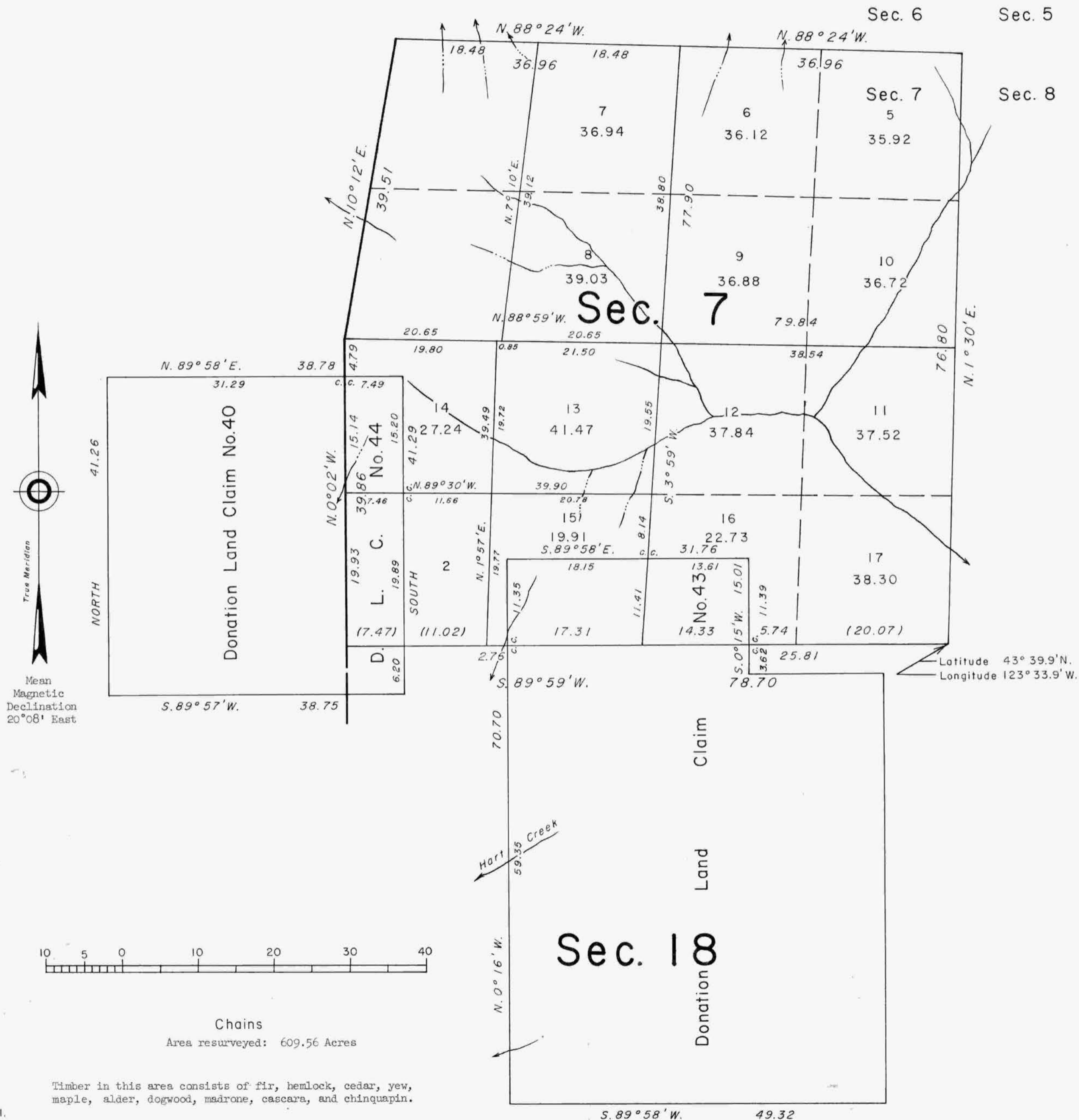


TOWNSHIP 22 SOUTH, RANGE 7 WEST, OF THE WILLAMETTE MERIDIAN, OREGON.

DEPENDENT RESURVEY AND SUBDIVISION OF SECTION 7



This plat represents a retracement and reestablishment of a portion of the west boundary, a portion of the subdivisional lines, and a portion of the claim lines, designed to restore the corners in their true original locations according to the best available evidence, and, subdivision of section 7, T. 22 S., R. 7 W., Willamette Meridian, Oregon.

Excepting as new or modified vacant subdivisions are shown hereon, the lottings and areas are as shown on the plats approved May 20, 1858, and April 26, 1872.

In 1855, Harvey Gordon and Charles T. Gardner surveyed the boundaries and a portion of the subdivisional lines. In 1871, William H. Byars surveyed a portion of the subdivisional lines and, in 1881, he retraced the west boundaries of sections 6 and 7. In 1856, Dennis Hathorn surveyed the Donation Land Claims Nos. 43 and 44 in T. 22 S., R. 7 W., and Donation Land Claim No. 40 in T. 22 S., R. 8 W.

The resurvey and subdivision of section 7 were executed by Peter A. Peterson, Cadastral Surveyor, April 2 to May 13, 1968, under Special Instructions dated February 7, 1968, which provide for the surveys included under Group No. 663, Oregon.

Latitude 43° 39.9' N.
Longitude 123° 33.9' W.

UNITED STATES DEPARTMENT OF THE INTERIOR
BUREAU OF LAND MANAGEMENT
Washington, D. C. December 30, 1970

This plat is strictly conformable to the approved field notes, and the survey, having been correctly executed in accordance with the requirements of law and the regulations of this Bureau, is hereby accepted.

For the Director

Clark F. Luman

Chief, Division of Cadastral Survey