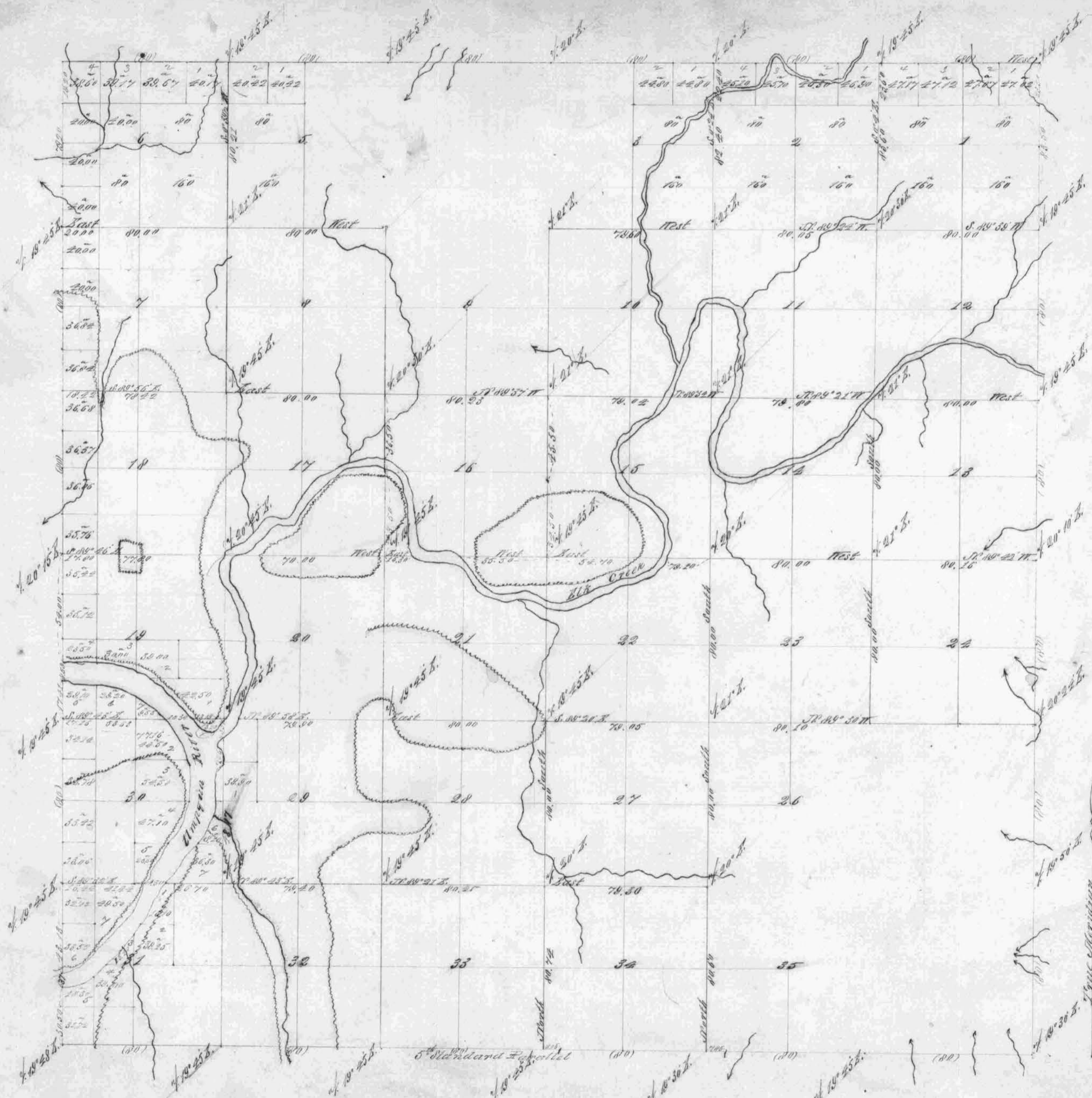


Township 22 South Range 7 West.

949

Sections	Acres
1	620.00
2	620.00
3	620.00
4	620.00
5	620.00
6	620.00
7	620.00
8	620.00
9	620.00
10	620.00
11	620.00
12	620.00
13	620.00
14	620.00
15	620.00
16	620.00
17	620.00
18	620.00
19	620.00
20	620.00
21	620.00
22	620.00
23	620.00
24	620.00
25	620.00
26	620.00
27	620.00
28	620.00
29	620.00
30	620.00
31	620.00
32	620.00
33	620.00
34	620.00
35	620.00
36	620.00
37	620.00
38	620.00
39	620.00
40	620.00
41	620.00
42	620.00
43	620.00
44	620.00
45	620.00
46	620.00
47	620.00
48	620.00
49	620.00
50	620.00
51	620.00
52	620.00
53	620.00
54	620.00
55	620.00
56	620.00
57	620.00
58	620.00
59	620.00
60	620.00
61	620.00
62	620.00
63	620.00
64	620.00
65	620.00
66	620.00
67	620.00
68	620.00
69	620.00
70	620.00
71	620.00
72	620.00
73	620.00
74	620.00
75	620.00
76	620.00
77	620.00
78	620.00
79	620.00
80	620.00
81	620.00
82	620.00
83	620.00
84	620.00
85	620.00
86	620.00
87	620.00
88	620.00
89	620.00
90	620.00
91	620.00
92	620.00
93	620.00
94	620.00
95	620.00
96	620.00
97	620.00
98	620.00
99	620.00
100	620.00
Total 13100.00	
Total US. 6326.68	



**General Description**  
 The land in this Township consists of 1<sup>st</sup>, 2<sup>d</sup> and 3<sup>d</sup> rate soil. The land along the creeks, and on the benches of the mountains, the remainder is 2<sup>d</sup> and 3<sup>d</sup> rate. There is but little impediment to the navigation of Blk creek up to the eastern boundary of the Township and above during the winter and spring months. There are several good Mill sites in this Township.

Scale 40 Chs to an inch

Lines	Contractor	Contract	Dist. Surveyed	Commenced	Completed
Subdivisions	H. H. Byars	152 June 3 <sup>d</sup> 1871	36 06 23	Aug 26 1871	Sept 7 <sup>th</sup> 1871
Intersection with			18 22		
Blue Lines indicate former survey.		Total	36 24 15		

The above map of the subdivisional lines of T. 22, S. R. 7 W. Will. Men. Oregon is strictly conformable to the original field notes of the survey thereof on file in this Office which have been examined and approved.  
 U. S. Surveyor General's Office  
 Eugene City April 26<sup>th</sup> 1872

W. H. Chell  
 Sur. Gen. Oregon