

Date: 8/6/2019 By: JC  
This survey consists of:  
Map: T22-6 2019-1  
Narrative: VOL 59 PAGES  
Corner Rpt: 23636-23652

# TOWNSHIP 22 SOUTH, RANGE 6 WEST, OF THE WILLAMETTE MERIDIAN, OREGON

## DEPENDENT RESURVEY

DOUGLAS COUNTY  
SURVEYOR

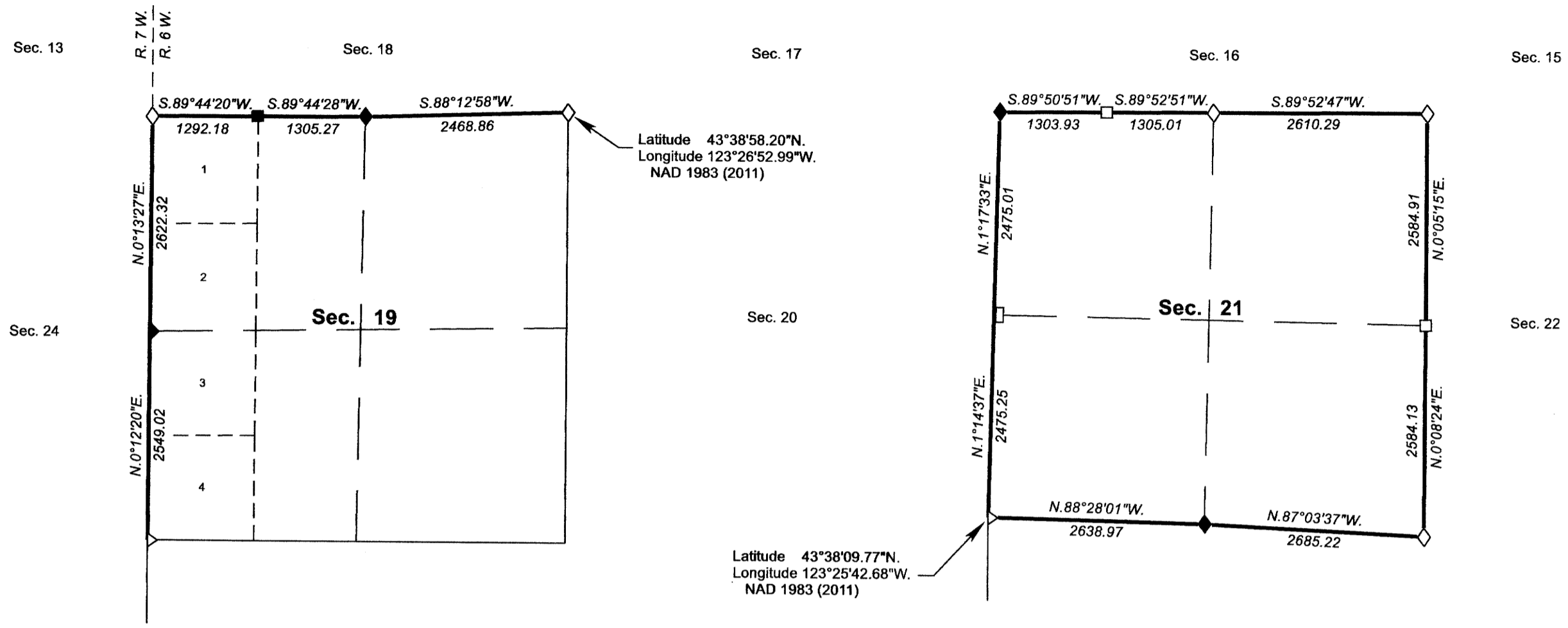
A history of surveys, corner descriptions, and other relevant information are contained in the field notes.

This plat represents the dependent resurvey of a portion of the west boundary and subdivisional lines, designed to restore the corners in their true original locations according to the best available evidence, Township 22 South, Range 6 West, Willamette Meridian, Oregon.

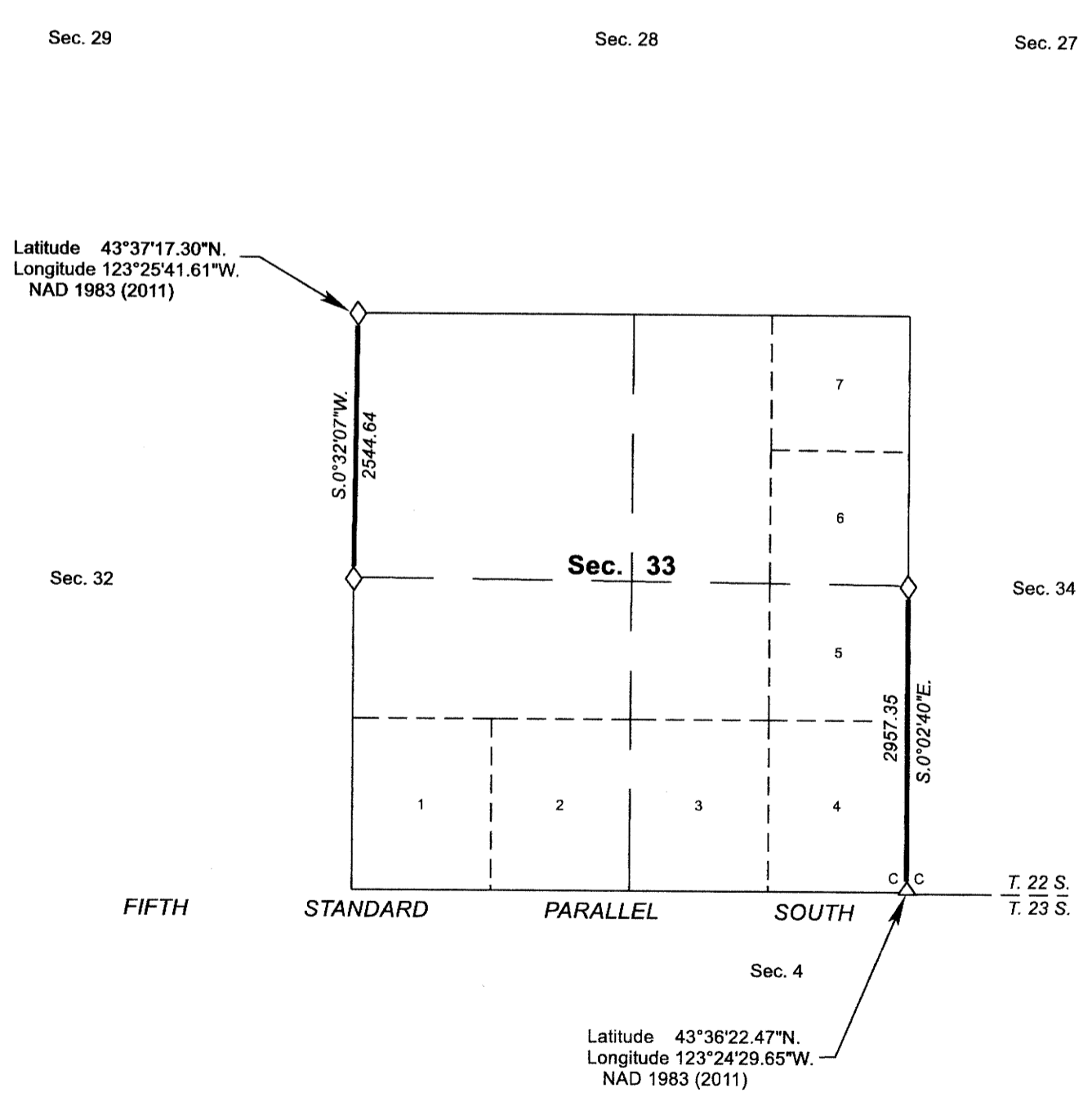
Official areas based on the measurements of this survey have been returned for Federal interest land where indicated. Aliquot part legal subdivisions retain their aliquot characteristics and refer to precisely the same land as that which was previously identified by its original survey or description. A lot can only be subdivided by survey or supplemental plat. Except as indicated hereon, the lottings and areas are as shown on the plats approved April 26, 1872 and March 25, 1898.

Survey executed by Jeffrey O. Covington, Cadastral Surveyor, beginning August 8, 2017, and completed February 6, 2019, pursuant to special instructions approved June 13, 2017 for Group No. 2875, Oregon.

OFFICIALLY FILED: 7/18/2019



LEGAL SUBDIVISION	OFFICIAL ACRES
SECTION 21	
NE1/4 NE1/4	38.66
NW1/4 NE1/4	38.24
SW1/4 NE1/4	38.52
SE1/4 NE1/4	38.93
NE1/4 NW1/4	37.75
NW1/4 NW1/4	37.31
SW1/4 NW1/4	37.43
SE1/4 NW1/4	37.85
NE1/4 SW1/4	37.58
NW1/4 SW1/4	37.42
SW1/4 SW1/4	37.52
SE1/4 SW1/4	37.68
NE1/4 SE1/4	39.06
NW1/4 SE1/4	38.40
SW1/4 SE1/4	38.65
SE1/4 SE1/4	39.32
<b>TOTAL AREA</b>	<b>610.32</b>
FEDERAL INTEREST LAND RESURVEYED	



**LEGEND**

- ◇ Original corner previously remonumented
- ◆ Original corner remonumented this survey
- Corner previously established or reestablished
- Corner previously established or reestablished; remonumented this survey

UNITED STATES DEPARTMENT OF THE INTERIOR  
BUREAU OF LAND MANAGEMENT

Portland, Oregon

This plat is strictly conformable to the approved field notes, and the survey, having been correctly executed in accordance with the requirements of law and the regulations of this Bureau, is hereby accepted.

For the Director  
*Mary J. M. Hunt*  
Chief Cadastral Surveyor of Oregon

*April 26, 2019*  
Date

